

# PEGLER

Valve technology



## VSH XPress





# Pegler

## VSH XPress price list

### contents

#### the press-fit jointing system

Copper	3 - 17
Stainless	18 - 26
Carbon	27 - 36
Gas	37 - 43
Stainless steel	44 - 48
Tools and accessories	49 - 58
Valves	59 - 76
Valves Fullflow carbon	77 - 79
Valves Fullflow stainless	80 - 81

Maintaining a policy of continual product development Pegler Yorkshire Group Limited reserve the right to change specifications, design, materials and prices of products listed in this price list without prior notice.

All tee sizes are UK designation throughout this price list.

**copper**

**S1/7270 straight coupling, press-fit x press-fit**



dimension	pack 1 qty	pack 2 qty	code	price cat	£ each
12mm	10	150	38009	PRSCU	2.79
15mm	10	200	38010	PRSCU	2.35
18mm	10	150	38011	PRSCU	2.97
22mm	10	100	38020	PRSCU	3.67
28mm	5	50	38030	PRSCU	7.92
35mm	5	25	38032	PRSCU	9.98
42mm	1	10	38034	PRSCU	17.93
54mm	1	10	38035	PRSCU	22.88
64mm	1	0	38970	PRSCU	POA
66.7mm	1	0	38036	PRSCU	55.26
76.1mm	1	0	38037	PRSCU	71.54
88.9mm	1	0	38039	PRSCU	96.16
108mm	1	0	38038	PRSCU	124.47

**S1FMF/7510 composite female metric flange PN16. Press-fit x powder coated steel flange to EN1092-1:1997 (BS4504)**



dimension	pack 1 qty	pack 2 qty	code	price cat	£ each
66.7mm (4 holes)	1	0	38364	PRSCU	165.12
76.1mm (4 holes)	1	0	38369	PRSCU	195.61
76.1mm (8 holes)	1	0	38365	PRSCU	195.61
88.9mm (8 holes)	1	0	38366	PRSCU	232.88
108mm (8 holes)	1	0	38367	PRSCU	230.84

**S1FMM/7520 composite male metric flange PN16. Male end for insertion into fitting x powder coated steel flange to EN1092-1:1997 (BS4504)**



dimension	pack 1 qty	pack 2 qty	code	price cat	£ each
66.7mm (4 holes)	1	0	38359	PRSCU	149.72
76.1mm (8 holes)	1	0	38360	PRSCU	175.19
108mm (8 holes)	1	0	38362	PRSCU	207.27

**S1R/7240 reduced coupling, press-fit x press-fit**



dimension	pack 1 qty	pack 2 qty	code	price cat	£ each
15 x 12mm	10	150	38063	PRSCU	9.52
16 x 15mm	10	140	38061	PRSCU	9.49
22 x 15mm	10	100	38064	PRSCU	10.76
28 x 15mm	10	80	38065	PRSCU	19.82
28 x 22mm	10	80	38066	PRSCU	24.90
35 x 28mm	5	15	38067	PRSCU	34.88
42 x 35mm	1	20	38068	PRSCU	62.75
54 x 42mm	1	10	38069	PRSCU	80.07

**copper**

**S1 slip/7270S straight coupling slip pattern, press-fit x press-fit**



**S2/6270G straight female connector, press-fit x BSP parallel female thread**



dimension	pack 1 qty	pack 2 qty	code	price cat	£ each
15mm	5	75	38044	PRSCU	5.09
18mm	5	75	38054	PRSCU	6.44
22mm	5	50	38045	PRSCU	8.45
28mm	5	40	38046	PRSCU	12.56
35mm	5	25	38047	PRSCU	14.98
42mm	1	10	38048	PRSCU	21.53
54mm	1	10	38049	PRSCU	27.43
66.7mm	1	0	38040	PRSCU	80.10
76.1mm	1	0	38041	PRSCU	102.10
88.9mm	1	0	38042	PRSCU	137.78
108mm	1	0	38043	PRSCU	161.53

dimension	pack 1 qty	pack 2 qty	code	price cat	£ each
12mm x 3/8"	5	250	38082	PRSCU	8.85
12mm x 1/2"	5	150	38081	PRSCU	8.68
15mm x 3/8"	5	175	38083	PRSCU	9.01
15mm x 1/2"	10	150	38090	PRSCU	10.20
15mm x 3/4"	5	100	38091	PRSCU	10.69
18mm x 1/2"	5	100	38084	PRSCU	11.78
18mm x 3/4"	5	100	38085	PRSCU	14.26
22mm x 1/2"	5	100	38086	PRSCU	12.77
22mm x 3/4"	5	75	38092	PRSCU	13.46
22mm x 1"	5	75	38087	PRSCU	14.80
28mm x 3/4"	5	50	38088	PRSCU	24.88
28mm x 1"	5	50	38093	PRSCU	18.14
28mm x 1 1/4"	5	50	38103	PRSCU	26.09
35mm x 3/4"	5	50	38080	PRSCU	35.44
35mm x 1"	5	40	38089	PRSCU	35.44
35mm x 1 1/4"	5	25	38094	PRSCU	35.44
42mm x 1 1/4"	1	15	38101	PRSCU	47.02
42mm x 1 1/2"	1	10	38095	PRSCU	50.65
54mm x 2"	1	8	38096	PRSCU	86.81
64mm x 2 1/2"	1	0	38954	PRSCU	158.96

**copper**

**S3/6243G straight male connector.**  
 Straight male connector, press-fit x BSP  
 taper male thread



dimension	pack 1 qty	pack 2 qty	code	price cat	£ each
12mm x 3/8"	5	250	38105	PRSCU	7.69
12mm x 1/2"	5	200	38106	PRSCU	7.77
15mm x 3/8"	5	150	38107	PRSCU	7.97
15mm x 1/2"	10	100	38114	PRSCU	6.49
15mm x 3/4"	5	100	38115	PRSCU	7.97
18mm x 1/2"	5	100	38108	PRSCU	10.31
18mm x 3/4"	5	100	38109	PRSCU	12.51
22mm x 1/2"	5	100	38110	PRSCU	11.20
22mm x 3/4"	10	100	38116	PRSCU	10.09
22mm x 1"	5	75	38117	PRSCU	11.03
28mm x 3/4"	5	75	38111	PRSCU	16.09
28mm x 1"	5	50	38118	PRSCU	13.50
28mm x 1 1/4"	5	50	38127	PRSCU	17.64
35mm x 1"	5	50	38112	PRSCU	24.45
35mm x 1 1/4"	5	50	38119	PRSCU	24.45
42mm x 1 1/4"	1	20	38113	PRSCU	34.62
42mm x 1 1/2"	1	15	38120	PRSCU	32.75
54mm x 2"	1	10	38121	PRSCU	63.20
64mm x 2 1/2"	1	0	38956	PRSCU	138.91
66.7mm x 2 1/2"	1	0	38122	PRSCU	121.37
76.1mm x 2 1/2"	1	0	38126	PRSCU	206.19
76.1mm x 3"	1	0	38123	PRSCU	210.06
88.9mm x 3"	1	0	38125	PRSCU	324.84
108mm x 4"	1	0	38124	PRSCU	363.68

**S6/7243 reducer, larger end male for insertion into fitting x press-fit**



dimension	pack 1 qty	pack 2 qty	code	price cat	£ each
15 x 12mm	10	200	38193	PRSCU	3.80
18 x 12mm	10	200	38196	PRSCU	4.09
18 x 15mm	10	100	38197	PRSCU	4.09
22 x 15mm	10	100	38200	PRSCU	2.72
22 x 18mm	10	100	38201	PRSCU	5.06
28 x 15mm	10	100	38202	PRSCU	7.54
28 x 18mm	5	75	38203	PRSCU	7.60
28 x 22mm	10	100	38204	PRSCU	7.78
35 x 22mm	5	50	38207	PRSCU	9.36
35 x 28mm	5	40	38208	PRSCU	10.35
42 x 22mm	1	20	38210	PRSCU	16.18
42 x 28mm	1	20	38211	PRSCU	15.41
42 x 35mm	1	10	38212	PRSCU	15.41
54 x 28mm	1	10	38215	PRSCU	24.55
54 x 35mm	1	15	38216	PRSCU	20.87
54 x 42mm	1	10	38217	PRSCU	20.87
66.7 x 28mm	1	0	38218	PRSCU	60.67
66.7 x 35mm	1	0	38219	PRSCU	60.67
66.7 x 42mm	1	0	38220	PRSCU	60.67
66.7 x 54mm	1	0	38221	PRSCU	73.42
76.1mm x 35mm	1	0	38222	PRSCU	88.69
76.1mm x 42mm	1	0	38223	PRSCU	88.69
76.1mm x 54mm	1	0	38224	PRSCU	79.55
76.1mm x 66.7mm	1	0	38225	PRSCU	79.55
88.9mm x 42mm	1	0	38233	PRSCU	102.82
88.9mm x 54mm	1	0	38226	PRSCU	102.82
88.9mm x 76.1mm	1	0	38227	PRSCU	102.82
108mm x 42mm	1	0	38228	PRSCU	130.05
108mm x 54mm	1	0	38229	PRSCU	122.23
108mm x 66.7mm	1	0	38230	PRSCU	133.31
108mm x 76.1mm	1	0	38231	PRSCU	133.31
108mm x 88.9mm	1	0	38232	PRSCU	153.29

**copper**

**S7/6246G female adaptor. Male copper for insertion into a fitting x BSP parallel female thread**



dimension	pack 1 qty	pack 2 qty	code	price cat	£ each
15mm x 1/2"	10	150	38160	PRSCU	5.33
18mm x 1/2"	10	150	38157	PRSCU	6.48
18mm x 3/4"	10	100	38158	PRSCU	6.72
22mm x 1/2"	10	100	38159	PRSCU	6.88
22mm x 3/4"	10	100	38161	PRSCU	6.88
28mm x 3/4"	5	75	38166	PRSCU	10.84
28mm x 1"	5	50	38162	PRSCU	9.22
35mm x 1"	5	50	38167	PRSCU	18.28
35mm x 1 1/4"	1	15	38163	PRSCU	18.55
42mm x 1 1/2"	1	15	38164	PRSCU	28.16
54mm x 2"	1	10	38165	PRSCU	34.83

**S8/6280G male adaptor. Male copper for insertion into a fitting x BSP male taper thread**



dimension	pack 1 qty	pack 2 qty	code	price cat	£ each
15mm x 1/2"	5	150	38170	PRSCU	3.89
18mm x 1/2"	5	125	38173	PRSCU	5.08
18mm x 3/4"	5	100	38174	PRSCU	5.25
22mm x 1/2"	5	100	38175	PRSCU	6.07
22mm x 3/4"	5	100	38171	PRSCU	5.25
28mm x 1"	5	50	38172	PRSCU	8.04
35mm x 1 1/4"	1	40	38176	PRSCU	28.65
42mm x 1 1/2"	1	20	38177	PRSCU	48.41

**S11/6330 union coupling**



dimension	pack 1 qty	pack 2 qty	code	price cat	£ each
15mm	5	75	38180	PRSCU	15.62
18mm	5	75	38179	PRSCU	21.34
22mm	5	50	38181	PRSCU	23.77
28mm	5	25	38182	PRSCU	33.55
35mm	5	20	38183	PRSCU	69.40
42mm	1	10	38184	PRSCU	94.96
54mm	1	5	38185	PRSCU	104.10

**S12/7002A elbow, press-fit x press-fit**



dimension	pack 1 qty	pack 2 qty	code	price cat	£ each
64mm	1	0	38958	PRSCU	POA
12mm	10	200	38279	PRSCU	3.67
15mm	10	150	38280	PRSCU	2.51
18mm	10	100	38282	PRSCU	3.85
22mm	10	50	38290	PRSCU	4.26
28mm	5	40	38300	PRSCU	9.15
35mm	5	25	38302	PRSCU	19.72
42mm	1	10	38304	PRSCU	37.06
54mm	1	8	38306	PRSCU	51.40
66.7mm	1	0	38307	PRSCU	88.13
76.1mm	1	0	38308	PRSCU	140.90
88.9mm	1	0	38309	PRSCU	176.10
108mm	1	0	38310	PRSCU	259.25

**copper**

**S12R/7002A reduced elbow, press-fit x press-fit**



dimension	pack 1 qty	pack 2 qty	code	price cat	£ each
22 x 15mm	10	50	38311	PRSCU	5.39

**S12S/7001A street elbow, press-fit x male end, for insertion into fitting**



dimension	pack 1 qty	pack 2 qty	code	price cat	£ each
12mm	10	200	38317	PRSCU	3.83
15mm	10	150	38318	PRSCU	2.53
18mm	10	100	38319	PRSCU	4.05
22mm	10	50	38320	PRSCU	4.40
28mm	5	40	38322	PRSCU	11.68
35mm	5	20	38324	PRSCU	20.36
42mm	1	10	38325	PRSCU	39.87
54mm	1	8	38326	PRSCU	53.56
66.7mm	1	0	38327A	PRSCU	101.35
76.1mm	1	0	38328	PRSCU	147.94
88.9mm	1	0	38329	PRSCU	185.39
108mm	1	0	38330A	PRSCU	259.25

**S13/6092G male elbow, press-fit x BSP taper male thread**



dimension	pack 1 qty	pack 2 qty	code	price cat	£ each
12mm x 1/2"	5	150	38370	PRSCU	13.41
15mm x 3/8"	5	100	38339	PRSCU	15.24
15mm x 1/2"	10	50	38333	PRSCU	14.43
18mm x 1/2"	5	25	38340	PRSCU	20.65
18mm x 3/4"	5	75	38372	PRSCU	20.65
22mm x 3/4"	5	25	38334	PRSCU	22.60
28mm x 1"	5	25	38335	PRSCU	34.64
35mm x 1 1/4"	5	20	38336	PRSCU	45.01
42mm x 1 1/2"	1	15	38337	PRSCU	58.69
54mm x 2"	1	10	38338	PRSCU	85.77

**S13K male elbow, press-fit x BSP taper male thread**

dimension	pack 1 qty	pack 2 qty	code	price cat	£ each
15mm x 1/2"	10	50	38980	PRSCU	17.15

**copper**

**S14/6090G female elbow, press-fit x parallel female thread**



dimension	pack 1 qty	pack 2 qty	code	price cat	£ each
12mm x 3/8"	5	150	38346	PRSCU	12.83
12mm x 1/2"	5	100	38345	PRSCU	12.49
15mm x 3/8"	5	100	38347	PRSCU	12.97
15mm x 1/2"	10	100	38351	PRSCU	12.16
15mm x 3/4"	10	100	38344	PRSCU	16.23
18mm x 1/2"	5	75	38348	PRSCU	17.57
18mm x 3/4"	5	75	38349	PRSCU	17.57
22mm x 1/2"	5	75	38350	PRSCU	14.42
22mm x 3/4"	5	50	38353	PRSCU	17.90
28mm x 1"	5	40	38354	PRSCU	29.64
35mm x 1 1/4"	5	20	38355	PRSCU	38.27
42mm x 1 1/2"	1	10	38356	PRSCU	52.07
54mm x 2"	1	8	38357	PRSCU	76.62

**S15/6472G backplate elbow, press-fit x BSP parallel female thread**



dimension	pack 1 qty	pack 2 qty	code	price cat	£ each
12mm x 1/2"	5	50	38397	PRSCU	13.05
15mm x 1/2"	10	80	38400	PRSCU	11.55
18mm x 1/2"	5	50	38398	PRSCU	25.21
22mm x 3/4"	5	50	38401	PRSCU	25.36

**S15L/6472L backplate elbow. Long pattern, press-fit x female iron**



dimension	pack 1 qty	pack 2 qty	code	price cat	£ each
15mm x 1/2"	5	40	38399	PRSCU	27.36

**S19/7005 90° bend. Male ends for insertion into fitting**



dimension	pack 1 qty	pack 2 qty	code	price cat	£ each
15mm	20	80	38390	PRSCU	9.91
22mm	10	30	38392	PRSCU	14.18
28mm	10	20	38393	PRSCU	23.71

**copper**

**S21/7041 obtuse elbow, press-fit x press-fit**



dimension	pack 1 qty	pack 2 qty	code	price cat	£ each
12mm	10	250	38411	PRSCU	3.05
15mm	10	200	38410	PRSCU	3.28
18mm	10	150	38413	PRSCU	3.99
22mm	10	100	38412	PRSCU	4.50
28mm	5	50	38414	PRSCU	13.54
35mm	5	25	38416	PRSCU	19.31
42mm	1	10	38417	PRSCU	32.11
54mm	1	5	38418	PRSCU	45.68
66.7mm	1	0	38419	PRSCU	106.44
76.1mm	1	0	38420	PRSCU	131.88
88.9mm	1	0	38422	PRSCU	169.10
108mm	1	0	38421	PRSCU	206.95

**S21S/7040 obtuse street elbow, press-fit x male end for insertion into fitting**



dimension	pack 1 qty	pack 2 qty	code	price cat	£ each
12mm	10	250	38402	PRSCU	2.52
15mm	10	200	38404	PRSCU	2.72
18mm	10	150	38403	PRSCU	3.28
22mm	10	100	38405	PRSCU	4.05
28mm	5	50	38406	PRSCU	14.10
35mm	5	25	38407	PRSCU	20.32
42mm	1	10	38408	PRSCU	32.23
54mm	1	5	38409	PRSCU	47.95
66.7mm	1	0	38430	PRSCU	122.38
76.1mm	1	0	38431	PRSCU	138.52
88.9mm	1	0	38433	PRSCU	177.97
108mm	1	0	38432A	PRSCU	206.95

**S22/7086 partial crossover, press-fit x male end for insertion into fitting**



dimension	pack 1 qty	pack 2 qty	code	price cat	£ each
15mm	5	50	38435	PRSCU	10.86
18mm	5	50	38437	PRSCU	17.11
22mm	5	20	38436	PRSCU	19.03

**S22S/7087 crossover, both ends male for insertion into fitting**



dimension	pack 1 qty	pack 2 qty	code	price cat	£ each
15mm	10	50	38438	PRSCU	11.57
18mm	10	50	38434	PRSCU	18.27
22mm	10	40	38439	PRSCU	32.46

**S23/7085 full crossover press-fit x press-fit**



dimension	pack 1 qty	pack 2 qty	code	price cat	£ each
15mm	5	75	38440	PRSCU	11.37
18mm	10	40	38442	PRSCU	17.72
22mm	5	30	38441	PRSCU	19.64

**copper**

**S24/7130 equal tee, press-fit on all ends**



dimension	pack 1 qty	pack 2 qty	code	price cat	£ each
12mm	10	150	38472	PRSCU	5.87
15mm	10	100	38450	PRSCU	4.04
18mm	10	50	38451	PRSCU	6.85
22mm	10	50	38460	PRSCU	7.33
28mm	5	25	38462	PRSCU	13.79
35mm	5	15	38464	PRSCU	23.85
42mm	1	10	38466	PRSCU	47.09
54mm	1	4	38467	PRSCU	58.78
64mm	1	0	38961	PRSCU	POA
66.7mm	1	0	38468A	PRSCU	174.95
76.1mm	1	0	38469A	PRSCU	249.38
88.9mm	1	0	38470A	PRSCU	297.92
108mm	1	0	38471A	PRSCU	339.02

**S25/7130 tee, reduced branch, press-fit on all ends**



dimension	pack 1 qty	pack 2 qty	code	price cat	£ each
15 x 15 x 12mm	10	100	38488	PRSCU	6.11
18 x 18 x 12mm	10	50	38452	PRSCU	6.22
18 x 18 x 15mm	10	50	38454	PRSCU	6.22
22 x 22 x 12mm	10	30	38491	PRSCU	6.25
22 x 22 x 15mm	10	50	38490	PRSCU	5.96
22 x 22 x 18mm	10	50	38535	PRSCU	6.25
28 x 28 x 12mm	5	30	38493	PRSCU	16.29
28 x 28 x 15mm	5	25	38492	PRSCU	16.29
28 x 28 x 18mm	5	25	38538	PRSCU	16.29
28 x 28 x 22mm	5	25	38494	PRSCU	16.29
35 x 35 x 15mm	5	30	38496	PRSCU	21.54
35 x 35 x 22mm	5	15	38497	PRSCU	21.22
35 x 35 x 28mm	5	20	38498	PRSCU	23.64
42 x 42 x 15mm	1	10	38499	PRSCU	46.17
42 x 42 x 22mm	1	15	38500	PRSCU	43.88
42 x 42 x 28mm	1	5	38501	PRSCU	42.73
42 x 42 x 35mm	1	8	38502	PRSCU	42.73
54 x 54 x 22mm	1	8	38504	PRSCU	74.64
54 x 54 x 28mm	1	5	38505	PRSCU	74.64
54 x 54 x 35mm	1	5	38506	PRSCU	72.24
54 x 54 x 42mm	1	5	38507	PRSCU	72.24
66.7 x 66.7 x 28mm	1	0	38550	PRSCU	175.77
66.7 x 66.7 x 35mm	1	0	38560	PRSCU	175.67
66.7 x 66.7 x 42mm	1	0	38561	PRSCU	175.67
66.7 x 66.7 x 54mm	1	0	38562	PRSCU	170.92
76.1 x 76.1 x 22mm	1	0	38563	PRSCU	214.66
76.1 x 76.1 x 28mm	1	0	38564	PRSCU	214.66
76.1 x 76.1 x 35mm	1	0	38553	PRSCU	215.49
76.1 x 76.1 x 42mm	1	0	38551	PRSCU	215.49
76.1 x 76.1 x 54mm	1	0	38552	PRSCU	215.49
108 X 108 X 54mm	1	0	38555A	PRSCU	286.79
108 x 108 x 66.7mm	1	0	38565A	PRSCU	336.16
108 x 108 x 76.1mm	1	0	38557A	PRSCU	337.17

**copper**

**S26/7130 tee, one end reduced, press-fit on all ends**



dimension	pack 1 qty	pack 2 qty	code	price cat	£ each
15 x 12 x 15mm	10	100	38508	PRSCU	6.11
18 x 15 x 18mm	10	50	38455	PRSCU	6.22
22 x 15 x 22mm	5	50	38510	PRSCU	12.67
22 x 18 x 22mm	10	50	38511	PRSCU	12.67
28 x 15 x 28mm	5	25	38512	PRSCU	12.74
28 x 22 x 28mm	5	25	38514	PRSCU	19.91
35 x 22 x 35mm	5	15	38517	PRSCU	27.49
35 x 28 x 35mm	5	15	38518	PRSCU	24.70

**S28/7130 tee, both ends reduced press-fit on all ends**



dimension	pack 1 qty	pack 2 qty	code	price cat	£ each
12 x 12 x 15mm	10	50	38447	PRSCU	13.46
15 x 15 x 18mm	10	100	38547	PRSCU	11.46
15 x 15 x 22mm	10	50	38545	PRSCU	11.46
22 x 22 x 28mm	5	35	38548	PRSCU	15.27
28 x 28 x 35mm	5	15	38549	PRSCU	27.41

**S27/7130 tee, one end and branch reduced, press-fit on all ends**



dimension	pack 1 qty	pack 2 qty	code	price cat	£ each
15 x 12 x 12mm	10	100	38527	PRSCU	6.11
18 x 15 x 15mm	10	50	38453	PRSCU	6.22
22 x 15 x 15mm	10	50	38530	PRSCU	11.46
22 x 18 x 15mm	10	50	38531	PRSCU	11.46
22 x 15 x 18mm	10	50	38533	PRSCU	20.32
22 x 18 x 18mm	10	50	38534	PRSCU	20.32
28 x 22 x 18mm	5	25	38529	PRSCU	19.91
28 x 22 x 15mm	5	25	38536	PRSCU	12.14
28 x 22 x 22mm	5	25	38532	PRSCU	20.32
35 x 22 x 22mm	5	20	38539	PRSCU	27.41
35 x 28 x 22mm	5	15	38541	PRSCU	27.99
35 x 28 x 28mm	5	15	38542	PRSCU	23.64
42 x 35 x 35mm	5	10	38546	PRSCU	35.99
54 x 42 x 42mm	1	8	38566	PRSCU	72.24

**S30/6130G female branch tee, press-fit x BSP parallel female branch**



dimension	pack 1 qty	pack 2 qty	code	price cat	£ each
12 x 12mm x 1/2"	5	75	38584	PRSCU	12.76
15 x 15mm x 1/2"	5	50	38585	PRSCU	14.00
18 x 18mm x 1/2"	5	50	38586	PRSCU	31.17
22 x 22mm x 1/2"	5	50	38591	PRSCU	20.89
22 x 22mm x 3/4"	5	40	38587	PRSCU	28.58
28 x 28mm x 1/2"	5	20	38592	PRSCU	32.14
28 x 28mm x 3/4"	5	25	38593	PRSCU	34.61
35 x 35mm x 1/2"	5	15	38594	PRSCU	36.81
42 x 42mm x 1/2"	1	15	38596	PRSCU	43.94
54 x 54mm x 1/2"	1	5	38597	PRSCU	54.07
76.1 x 76.1mm x 1/2"	1	0	38190	PRSCU	234.06
108 x 108mm x 1/2"	1	0	38191	PRSCU	302.30

**copper**

**S32/6131G tee multi-port female branch tee**



dimension	pack 1 qty	pack 2 qty	code	price cat	£ each
66.7mm x 1/2" (2 x ports)	1	0	38189	PRSCU	229.97
76.1mm x 1/2" (2 x ports)	1	0	38188	PRSCU	258.15
88.9mm x 3/4" (3 x ports)	1	0	38192	PRSCU	308.39
108mm x 3/4" (4 x ports)	1	0	38206	PRSCU	340.23

**S60 stop end, male end for insertion into fitting**



dimension	pack 1 qty	pack 2 qty	code	price cat	£ each
35mm	1	25	38686	PRSCU	19.91
42mm	1	12	38688	PRSCU	29.11
54mm	1	12	38690	PRSCU	37.15

**S61/7301 stop end, for use with copper tube**



dimension	pack 1 qty	pack 2 qty	code	price cat	£ each
12mm	10	350	38702	PRSCU	5.48
15mm	10	250	38695	PRSCU	5.31
18mm	10	200	38696	PRSCU	6.72
22mm	10	150	38697	PRSCU	6.17
28mm	5	75	38698	PRSCU	9.75
35mm	2	40	38699	PRSCU	16.79
42mm	1	20	38700	PRSCU	25.25
54mm	1	15	38701	PRSCU	30.38
66.7mm	1	0	38691	PRSCU	58.02
76.1mm	1	0	38692	PRSCU	63.50
88.9mm	1	0	38693	PRSCU	POA
108mm	1	0	38694	PRSCU	108.35

**S65F/6096G elbow, press-fit x female union**



dimension	pack 1 qty	pack 2 qty	code	price cat	£ each
12mm x 1/2"	5	50	38790	PRSCU	27.49
15mm x 1/2"	5	50	38791	PRSCU	27.81
18mm x 1/2"	5	50	38792	PRSCU	28.61
18mm x 3/4"	5	50	38793	PRSCU	39.58
22mm x 3/4"	5	25	38794	PRSCU	41.30
22mm x 1"	5	25	38795	PRSCU	45.22
28mm x 1"	5	20	38796	PRSCU	45.87

**copper**

**S68FF/6359 union press-fit female x union end**



dimension	pack 1 qty	pack 2 qty	code	price cat	£ each
15mm x 3/4"	5	100	38235	PRSCU	21.17
18mm x 3/4"	5	100	38237	PRSCU	26.95
22mm x 1"	5	75	38238	PRSCU	28.48
28mm x 1 1/4"	5	50	38239	PRSCU	31.64
35mm x 1 1/2"	5	40	38242	PRSCU	48.36
42mm x 1 3/4"	5	15	38243	PRSCU	61.51
54mm x 2 3/8"	1	5	38244	PRSCU	79.94

**S69/6331G straight male union connector, press-fit x BSP taper male thread**



dimension	pack 1 qty	pack 2 qty	code	price cat	£ each
12mm x 1/2"	5	75	38808	PRSCU	23.71
15mm x 1/2"	5	50	38813	PRSCU	23.98
15mm x 3/4"	5	50	38809	PRSCU	23.94
18mm x 1/2"	5	50	38810	PRSCU	24.66
18mm x 3/4"	5	50	38811	PRSCU	34.10
22mm x 1/2"	5	50	38812	PRSCU	39.04
22mm x 3/4"	5	50	38814	PRSCU	35.52
22mm x 1"	5	50	38815	PRSCU	39.04
28mm x 3/4"	5	40	38820	PRSCU	38.03
28mm x 1"	5	25	38816	PRSCU	39.44
35mm x 1 1/4"	5	25	38817	PRSCU	43.42
42mm x 1 1/2"	1	10	38818	PRSCU	57.84
54mm x 2"	1	5	38819	PRSCU	76.26

**S69F/6330G straight female union connector, press-fit x BSP parallel female thread**



dimension	pack 1 qty	pack 2 qty	code	price cat	£ each
12mm x 1/2"	5	100	38828	PRSCU	23.71
15mm x 1/2"	5	75	38833	PRSCU	23.98
15mm x 3/4"	5	75	38829	PRSCU	33.27
18mm x 1/2"	5	75	38830	PRSCU	34.43
18mm x 3/4"	5	50	38831	PRSCU	35.35
22mm x 3/4"	5	60	38834	PRSCU	35.52
22mm x 1"	5	50	38832	PRSCU	35.52
28mm x 3/4"	5	40	38827	PRSCU	43.54
28mm x 1"	5	40	38835	PRSCU	39.44
35mm x 1 1/4"	5	25	38836	PRSCU	43.42
42mm x 1 1/2"	1	10	38837	PRSCU	57.84
54mm x 2"	1	5	38838	PRSCU	76.26

**S1CP/7270 straight coupling, press-fit x press-fit**



dimension	pack 1 qty	pack 2 qty	code	price cat	£ each
12mm	10	350	38610	PRSCU	4.90
15mm	10	180	38611	PRSCU	4.27
22mm	10	60	38612	PRSCU	6.70

**copper**

**S1SCP/7270S** straight coupling slip pattern, press-fit x press-fit



dimension	pack 1 qty	pack 2 qty	code	price cat	£ each
15mm	5	100	38614	PRSCU	8.88

**S1RCP/7240S** reduced coupling, press-fit x press-fit



dimension	pack 1 qty	pack 2 qty	code	price cat	£ each
15 x 12mm	10	150	38616	PRSCU	16.68
22 x 15mm	10	100	38617	PRSCU	18.83

**S2CP/6270G** straight female connector, press-fit x BSP parallel female thread



dimension	pack 1 qty	pack 2 qty	code	price cat	£ each
12mm x 3/8"	5	100	38619	PRSCU	15.47
12mm x 1/2"	5	100	38620	PRSCU	15.18
15mm x 3/8"	5	100	38621	PRSCU	15.79
15mm x 1/2"	10	150	38622	PRSCU	17.85

**S3CP/6243G** straight male connector, press-fit x BSP taper male thread



dimension	pack 1 qty	pack 2 qty	code	price cat	£ each
12mm x 3/8"	5	200	38627	PRSCU	13.47
12mm x 1/2"	5	100	38628	PRSCU	13.60
15mm x 3/8"	5	100	38629	PRSCU	13.94
15mm x 1/2"	10	150	38630	PRSCU	11.92

**S6CP/7243** reducer, larger end male for insertion into fitting x press-fit



dimension	pack 1 qty	pack 2 qty	code	price cat	£ each
15 x 12mm	10	180	38636	PRSCU	6.61
22 x 15mm	10	100	38639	PRSCU	4.95

**S8CP/6280G** male adaptor. Male end for insertion into fitting x BSP taper male thread



dimension	pack 1 qty	pack 2 qty	code	price cat	£ each
15mm x 1/2"	5	100	38642	PRSCU	6.83

**copper**

**S12CP/7002A elbow, press-fit x press-fit**



dimension	pack 1 qty	pack 2 qty	code	price cat	£ each
12mm	10	100	38645	PRSCU	6.41
15mm	10	150	38646	PRSCU	4.62
22mm	10	50	38647	PRSCU	7.81

**S21CP/7041 obtuse elbow, press-fit x press-fit**



dimension	pack 1 qty	pack 2 qty	code	price cat	£ each
12mm	10	180	38667	PRSCU	5.38
15mm	10	150	38668	PRSCU	5.73

**S12SCP/7001A street elbow, press-fit x male end for insertion into fitting**



dimension	pack 1 qty	pack 2 qty	code	price cat	£ each
12mm	10	100	38649	PRSCU	6.69
15mm	10	100	38650	PRSCU	4.68
22mm	10	80	38651	PRSCU	8.11

**S21SCP/7040 obtuse street elbow. Press-fit x male end for insertion into fitting.**



dimension	pack 1 qty	pack 2 qty	code	price cat	£ each
12mm	10	180	38671	PRSCU	4.45
15mm	10	150	38672	PRSCU	4.75

**S13CP/6092G male elbow, press-fit x BSP taper male thread**



dimension	pack 1 qty	pack 2 qty	code	price cat	£ each
15mm x 1/2"	10	100	38655	PRSCU	25.27

**S22CP/7086 partial crossover, press-fit x male end for insertion into fitting**



dimension	pack 1 qty	pack 2 qty	code	price cat	£ each
15mm	5	40	38675	PRSCU	19.01

**copper**

**S24CP/7130 equal tee, press-fit on all ends**



dimension	pack 1 qty	pack 2 qty	code	price cat	£ each
12mm	10	80	38710	PRSCU	10.26
15mm	10	80	38711	PRSCU	7.40
22mm	10	40	38712	PRSCU	13.47

**S25CP/7130 tee, reduced branch, press-fit on all ends**



dimension	pack 1 qty	pack 2 qty	code	price cat	£ each
15 x 15 x 12mm	10	100	38714	PRSCU	10.68
22 x 22 x 15mm	10	50	38715	PRSCU	10.92

**S26CP/7130 tee, one end reduced, press-fit on all ends**



dimension	pack 1 qty	pack 2 qty	code	price cat	£ each
15 x 12 x 15mm	10	80	38719	PRSCU	10.67

**S27CP/7130 tee, one end and branch reduced, press-fit on all ends**



dimension	pack 1 qty	pack 2 qty	code	price cat	£ each
15 x 12 x 12mm	10	100	38723	PRSCU	10.67

**S30CP/6130G female branch tee, press-fit x BSP parallel female branch**



dimension	pack 1 qty	pack 2 qty	code	price cat	£ each
15 x 15mm x 1/2"	5	60	38733	PRSCU	24.51

**S61CP/7301 stop end, for use with copper tube**



dimension	pack 1 qty	pack 2 qty	code	price cat	£ each
15mm	10	250	38739	PRSCU	9.29

**copper**

S68FFCP/6359 flat faced union adaptor.  
Press-fit female x union nut



dimension	pack 1 qty	pack 2 qty	code	price cat	£ each
15mm x 3/4"	5	90	38742	PRSCU	37.05

**stainless**

**SS1 straight coupling, press-fit x press-fit**



dimension	pack 1 qty	pack 2 qty	code	price cat	£ each
15mm (A)	10	140	11694	PRSSF	8.08
18mm (A)	10	140	11695	PRSSF	8.74
22mm	10	80	11696	PRSSF	10.17
28mm	10	60	11697	PRSSF	11.45
35mm	5	40	11698	PRSSF	14.26
42mm	4	24	11699	PRSSF	19.41
54mm	4	16	11700	PRSSF	23.40
76.1mm (C)	4	0	20415	PRSSF	115.57
88.9mm (C)	4	0	20416	PRSSF	132.05
108mm (C)	2	0	20417	PRSSF	167.86
139.7mm	1	0	11470	PRLSF	281.11
168.3mm	1	0	11471	PRLSF	339.34

**SS1 slip straight coupling slip pattern, press-fit x press-fit**



dimension	pack 1 qty	pack 2 qty	code	price cat	£ each
15mm (A)	10	140	11728	PRSSF	13.44
18mm (A)	10	100	11730	PRSSF	15.36
22mm	10	60	11729	PRSSF	15.94
28mm	10	40	11731	PRSSF	18.46
35mm	5	20	11732	PRSSF	20.65
42mm	4	16	11733	PRSSF	24.04
54mm	2	8	11734	PRSSF	30.71
76.1mm (C)	2	0	20428	PRSSF	170.66
88.9mm (C)	2	0	20429	PRSSF	192.68
108mm (C)	2	0	20430	PRSSF	231.17

**SS1FMF female metric flange PN16. Press-fit x steel flange to EN1092-1:1997 (BS4504)**



dimension	pack 1 qty	pack 2 qty	code	price cat	£ each
22mm (4 holes)	1	12	11570	PRSSF	110.83
28mm (4 holes)	1	12	11571	PRSSF	124.53
35mm (4 holes)	1	6	11572	PRSSF	138.74
42mm (4 holes)	1	4	11680	PRSSF	155.46
54mm (4 holes)	1	2	11681	PRSSF	191.67
76.1mm (4 holes)	1	0	20412	PRSSF	302.86
88.9mm (8 holes)	1	0	20413	PRSSF	359.88
108mm (8 holes)	1	0	20414	PRSSF	427.21
139.7mm	1	0	11472	PRLSF	413.03
168.3mm	1	0	11473	PRLSF	474.82

**SS1V transition for grooved coupling, press-fit x groove**



dimension	pack 1 qty	pack 2 qty	code	price cat	£ each
28mm x 34mm	10	30	11675	PRSSF	53.88
35mm x 42mm	10	30	11676	PRSSF	60.84
42mm x 48mm	5	20	11677	PRSSF	81.66
54mm x 60mm	5	15	11678	PRSSF	115.97
76.1mm x 76.1mm (C)	2	0	20461	PRSSF	274.52
88.9mm x 88.9mm (C)	2	0	20462	PRSSF	336.40
108mm x 114mm (C)	2	0	20463	PRSSF	415.67

**stainless**

**SS2 straight female connector, press-fit x BSP parallel female thread**



dimension	pack 1 qty	pack 2 qty	code	price cat	£ each
15mm x 1/2" (A)	10	130	11641	PRSSF	16.58
18mm x 1/2" (A)	10	120	11643	PRSSF	17.48
22mm x 1/2"	10	100	11646	PRSSF	18.68
22mm x 3/4"	10	100	11647	PRSSF	21.98
28mm x 1/2"	10	40	11631	PRSSF	27.50
28mm x 3/4"	10	40	11650	PRSSF	30.19
28mm x 1"	10	60	11648	PRSSF	34.10
35mm x 1"	10	20	11652	PRSSF	36.23
35mm x 1 1/4"	10	30	11653	PRSSF	37.31
35mm x 1 1/2"	10	20	11632	PRSSF	37.31
42mm x 1 1/2"	4	24	11654	PRSSF	57.42
54mm x 2"	4	12	11657	PRSSF	85.92

**SS3 straight male connector, press-fit x BSP taper male thread**



dimension	pack 1 qty	pack 2 qty	code	price cat	£ each
12mm x 1/2" (A)	10	50	11534	PRSSF	15.39
15mm x 1/2" (A)	10	200	11658	PRSSF	15.39
18mm x 1/2" (A)	10	160	11660	PRSSF	16.94
22mm x 1/2"	10	70	11662	PRSSF	18.63
22mm x 3/4"	10	100	11664	PRSSF	19.20
22mm x 1"	10	60	11663	PRSSF	20.15
28mm x 3/4"	10	50	11642	PRSSF	23.38
28mm x 1"	10	60	11665	PRSSF	24.28
28mm x 1 1/4"	10	30	11666	PRSSF	30.18
35mm x 1"	10	40	11667	PRSSF	33.11
35mm x 1 1/4"	5	40	11670	PRSSF	35.54
35mm x 1 1/2"	10	20	11645	PRSSF	35.54
42mm x 1 1/4"	4	12	11668	PRSSF	50.29
42mm x 1 1/2"	4	24	11671	PRSSF	51.79
54mm x 1 1/2"	4	16	11656	PRSSF	69.63
54mm x 2"	4	12	11674	PRSSF	69.63
76.1mm x 2 1/2" (C)	2	0	20458	PRSSF	389.15
88.9mm x 3" (C)	2	0	20459	PRSSF	449.34

**SS2LC slip long connector, press-fit x BSP parallel female thread**



dimension	pack 1 qty	pack 2 qty	code	price cat	£ each
22mm x 1/2"	10	60	11590	PRSSF	44.17
22mm x 3/4"	10	60	11591	PRSSF	45.55
28mm x 1/2"	10	40	11592	PRSSF	52.38
28mm x 3/4"	10	40	11593	PRSSF	59.34

**stainless**

**SS6 reducer, larger end male for insertion into fitting x press-fit**



dimension	pack 1 qty	pack 2 qty	code	price cat	£ each
18 x 15mm (A)	10	200	11712	PRSSF	8.74
22 x 15mm (A)	10	140	11713	PRSSF	9.62
22 x 18mm (A)	10	120	11714	PRSSF	10.02
28 x 15mm (A)	10	70	11715	PRSSF	10.90
28 x 18mm (A)	10	100	11716	PRSSF	11.10
28 x 22mm	10	80	11717	PRSSF	11.30
35 x 18mm (A)	5	50	11718	PRSSF	13.18
35 x 22mm	5	50	11719	PRSSF	13.78
35 x 28mm	5	60	11720	PRSSF	17.09
42 x 22mm (C)	4	24	11659	PRSSF	44.08
42 x 28mm	4	24	11722	PRSSF	23.86
42 x 35mm	4	24	11723	PRSSF	27.05
54 x 22mm (C)	4	16	11724	PRSSF	46.74
54 x 28mm (C)	4	16	11725	PRSSF	50.84
54 x 35mm	4	16	11726	PRSSF	53.14
54 x 42mm	4	16	11727	PRSSF	56.14
76.1 x 42mm (C)	4	0	20460	PRSSF	62.25
76.1 x 54mm (C)	4	0	20422	PRSSF	99.08
88.9 x 54mm (C)	4	0	20423	PRSSF	106.94
88.9 x 76.1mm (C)	4	0	20424	PRSSF	131.82
108 x 54mm (C)	2	0	20425	PRSSF	145.71
108 x 76.1mm (C)	2	0	20426	PRSSF	151.39
108 x 88.9mm (C)	2	0	20427	PRSSF	167.86
139.7 x 88.9mm	1	0	11474	PRLSF	412.58
139.7 x 108mm	1	0	11475	PRLSF	412.58
168.3 x 88.9mm	1	0	11476	PRLSF	501.36
168.3 x 108mm	1	0	11477	PRLSF	501.36
168.3 x 139.7mm	1	0	11478	PRLSF	501.36

**SS12 90° elbow, press-fit x press-fit**



dimension	pack 1 qty	pack 2 qty	code	price cat	£ each
15mm (A)	10	150	11620	PRSSF	11.56
18mm (A)	10	90	11621	PRSSF	13.29
22mm	10	60	11622	PRSSF	16.19
28mm	5	30	11623	PRSSF	20.41
35mm	5	20	11624	PRSSF	32.11
42mm	2	8	11625	PRSSF	53.61
54mm	2	8	11626	PRSSF	74.03
76.1mm (C)	2	0	20406	PRSSF	178.85
88.9mm (C)	2	0	20407	PRSSF	217.38
108mm (C)	2	0	20408	PRSSF	297.21
139.7mm	1	0	11479	PRLSF	498.79
168.3mm	1	0	11480	PRLSF	662.53

**SS12S 90° street elbow, press-fit x male end for insertion into fitting**



dimension	pack 1 qty	pack 2 qty	code	price cat	£ each
15mm (A)	10	120	11634	PRSSF	11.35
18mm (A)	10	60	11635	PRSSF	12.94
22mm	5	60	11636	PRSSF	15.70
28mm	5	30	11637	PRSSF	19.61
35mm	5	10	11638	PRSSF	31.52
42mm	2	8	11639	PRSSF	51.06
54mm	2	6	11640	PRSSF	73.53
76.1mm (C)	2	0	20409	PRSSF	178.85
88.9mm (C)	2	0	20410	PRSSF	217.38
108mm (C)	2	0	20411	PRSSF	297.21
139.7mm	1	0	11481	PRLSF	498.79
168.3mm	1	0	11482	PRLSF	662.53

**stainless**

**SS13 male elbow, press-fit x BSP taper male thread**



dimension	pack 1 qty	pack 2 qty	code	price cat	£ each
15mm x 1/2" (A)	10	80	11687	PRSSF	21.22
22mm x 3/4"	10	60	11689	PRSSF	29.26
28mm x 1"	10	30	11690	PRSSF	37.31
35mm x 1 1/4"	5	20	11691	PRSSF	53.42
42mm x 1 1/2"	2	16	11692	PRSSF	94.48
54mm x 2"	2	8	11693	PRSSF	120.75

**SS14 female elbow, press-fit x BSP parallel female thread**



dimension	pack 1 qty	pack 2 qty	code	price cat	£ each
15mm x 1/2" (A)	10	80	11682	PRSSF	24.27
22mm x 1/2"	10	50	11683	PRSSF	31.56
22mm x 3/4"	10	50	11684	PRSSF	32.60
28mm x 1/2"	5	30	11600	PRSSF	39.01
28mm x 1"	10	30	11685	PRSSF	42.29
35mm x 1/2"	5	10	11602	PRSSF	51.15

**SS19S 15° bend. Male x male**



dimension	pack 1 qty	pack 2 qty	code	price cat	£ each
28mm	10	40	11550	PRSSF	22.97
35mm	5	15	11551	PRSSF	39.18
42mm	2	20	11552	PRSSF	51.00
54mm	2	10	11553	PRSSF	63.80

**SS19S 60° bend, male x male**



dimension	pack 1 qty	pack 2 qty	code	price cat	£ each
28mm	5	30	11555	PRSSF	43.98
35mm	4	12	11556	PRSSF	65.68
42mm	5	25	11557	PRSSF	89.15
54mm	2	6	11558	PRSSF	112.61

**SS19S 90° bend, male x male**



dimension	pack 1 qty	pack 2 qty	code	price cat	£ each
22mm	10	30	11561	PRSSF	37.28
28mm	5	20	11562	PRSSF	43.98
35mm	4	8	11563	PRSSF	65.68
42mm	2	4	11564	PRSSF	89.15
54mm	2	4	11565	PRSSF	112.61

**stainless**

**SS21 45° obtuse elbow, press-fit x press-fit**



dimension	pack 1 qty	pack 2 qty	code	price cat	£ each
15mm (A)	10	150	11604	PRSSF	15.70
18mm (A)	10	120	11605	PRSSF	16.73
22mm	10	70	11606	PRSSF	19.55
28mm	10	40	11607	PRSSF	22.70
35mm	5	25	11608	PRSSF	26.64
42mm	2	16	11609	PRSSF	42.87
54mm	2	8	11610	PRSSF	55.70
76.1mm (C)	2	0	20400	PRSSF	170.66
88.9mm (C)	2	0	20401	PRSSF	203.60
108mm (C)	2	0	20402	PRSSF	277.96
139.7mm	1	0	11483	PRLSF	498.79
168.3mm	1	0	11484	PRLSF	662.53

**SS24 equal tee, press-fit on all ends**



dimension	pack 1 qty	pack 2 qty	code	price cat	£ each
15mm (A)	10	80	11735	PRSSF	18.95
18mm (A)	10	40	11737	PRSSF	21.58
22mm	10	40	11740	PRSSF	22.26
28mm	5	25	11744	PRSSF	27.18
35mm	5	15	11749	PRSSF	34.45
42mm	4	8	11753	PRSSF	48.88
54mm	2	6	11758	PRSSF	58.51
76.1mm (C)	2	0	20431	PRSSF	322.00
88.9mm (C)	2	0	20432	PRSSF	352.24
108mm (C)	2	0	20433	PRSSF	434.81
139.7mm	1	0	11487	PRLSF	722.08
168.3mm	1	0	11488	PRLSF	903.39

**SS21S obtuse street elbow, press-fit x male end for insertion into fitting**



dimension	pack 1 qty	pack 2 qty	code	price cat	£ each
15mm (A)	10	150	11611	PRSSF	15.39
18mm (A)	10	120	11612	PRSSF	16.38
22mm	10	60	11613	PRSSF	18.88
28mm	10	40	11614	PRSSF	22.10
35mm	5	25	11615	PRSSF	25.15
42mm	4	16	11616	PRSSF	40.57
54mm	2	8	11617	PRSSF	52.81
76.1mm (C)	2	0	20403	PRSSF	156.83
88.9mm (C)	2	0	20404	PRSSF	187.15
108mm (C)	2	0	20405	PRSSF	255.97
139.7mm	1	0	11485	PRLSF	498.79
168.3mm	1	0	11486	PRLSF	662.53

**stainless**

SS25 tee, reduced branch, press-fit on all ends



dimension	pack 1 qty	pack 2 qty	code	price cat	£ each
18 x 15mm (A)	10	60	11736	PRSSF	18.78
22 x 15mm (A)	10	50	11738	PRSSF	19.90
22 x 18mm (A)	10	50	11739	PRSSF	20.56
28 x 15mm (A)	5	30	11741	PRSSF	24.12
28 x 18mm (A)	10	30	11742	PRSSF	24.76
28 x 22mm	5	30	11743	PRSSF	26.10
35 x 15mm (A)	5	20	11745	PRSSF	29.79
35 x 18mm (A)	5	20	11746	PRSSF	30.23
35 x 22mm	5	20	11747	PRSSF	30.97
35 x 28mm	5	20	11748	PRSSF	32.31
42 x 22mm	4	12	11750	PRSSF	44.36
42 x 28mm	4	12	11751	PRSSF	45.92
42 x 35mm	4	12	11752	PRSSF	47.31
54 x 22mm	2	8	11754	PRSSF	50.28
54 x 28mm	2	8	11755	PRSSF	51.71
54 x 35mm	2	8	11756	PRSSF	53.42
54 x 42mm	2	8	11757	PRSSF	54.98
76.1 x 22mm (C)	2	0	20434	PRSSF	242.22
76.1 x 28mm (C)	2	0	20435	PRSSF	261.43
76.1 x 35mm (C)	2	0	20436	PRSSF	280.68
76.1 x 42mm (C)	2	0	20437	PRSSF	302.75
76.1 x 54mm (C)	2	0	20438	PRSSF	322.00
88.9 x 22mm (C)	2	0	20439	PRSSF	255.97
88.9 x 28mm (C)	2	0	20440	PRSSF	274.61
88.9 x 35mm (C)	2	0	20441	PRSSF	294.41
88.9 x 42mm (C)	2	0	20442	PRSSF	316.49
88.9 x 54mm (C)	2	0	20443	PRSSF	330.21
88.9 x 76.1mm (C)	2	0	20444	PRSSF	352.24
108 x 22mm (C)	2	0	20445	PRSSF	272.47
108 x 28mm (C)	2	0	20446	PRSSF	288.91
108 x 35mm (C)	2	0	20447	PRSSF	316.49
108 x 42mm (C)	2	0	20448	PRSSF	330.21
108 x 54mm (C)	2	0	20449	PRSSF	357.82
108 x 76.1mm (C)	2	0	20450	PRSSF	377.04
108 x 88.9mm (C)	2	0	20451	PRSSF	432.07
139.7 x 76.1mm	1	0	11489	PRLSF	632.68
139.7 x 88.9mm	1	0	11490	PRLSF	632.68
139.7 x 108mm	1	0	11491	PRLSF	644.13
168.3 x 76.1mm	1	0	11492	PRLSF	779.14
168.3 x 88.9mm	1	0	11493	PRLSF	779.14
168.3 x 108mm	1	0	11494	PRLSF	779.14
168.3 x 139.7mm	1	0	11495	PRLSF	846.14

SS30 female branch tee, press-fit x BSP parallel female branch



dimension	pack 1 qty	pack 2 qty	code	price cat	£ each
15mm x 1/2" (A)	10	70	11759	PRSSF	20.73
18mm x 1/2" (A)	10	50	11760	PRSSF	20.92
22mm x 1/2"	10	40	11762	PRSSF	22.71
22mm x 3/4"	10	40	11763	PRSSF	25.44
28mm x 1/2"	5	30	11765	PRSSF	25.06
28mm x 3/4"	10	30	11766	PRSSF	29.66
35mm x 1/2"	5	20	11767	PRSSF	30.18
35mm x 3/4"	5	20	11768	PRSSF	37.36
42mm x 1/2"	4	16	11769	PRSSF	36.77
42mm x 3/4"	4	12	11770	PRSSF	41.03
54mm x 1/2"	2	8	11771	PRSSF	43.69
54mm x 3/4"	2	8	11773	PRSSF	47.94
54mm x 1"	2	8	11630	PRSSF	67.09
54mm x 2"	2	6	11772	PRSSF	94.96
76.1mm x 3/4" (C)	2	0	20452	PRSSF	263.49
76.1mm x 2" (C)	2	0	20453	PRSSF	291.29
88.9mm x 3/4" (C)	2	0	20454	PRSSF	286.30
88.9mm x 2" (C)	2	0	20455	PRSSF	304.03
108mm x 3/4" (C)	2	0	20456	PRSSF	344.50
108mm x 2" (C)	2	0	20457	PRSSF	367.37
139.7mm x 3/4" (A)	1	0	20464	PRSSF	491.98
139.7mm x 2"	1	0	20470	PRSSF	509.25

**stainless**

**SS61 stop end, for use on stainless steel tube**



dimension	pack 1 qty	pack 2 qty	code	price cat	£ each
15mm (A)	20	80	11701	PRSSF	7.72
18mm (A)	20	300	11702	PRSSF	8.08
22mm	10	150	11703	PRSSF	8.95
28mm	10	130	11704	PRSSF	12.66
35mm	5	75	11705	PRSSF	14.65
42mm	4	48	11706	PRSSF	20.56
54mm	4	24	11707	PRSSF	23.81
76.1mm (C)	2	0	20418	PRSSF	35.14
88.9mm (C)	2	0	20419	PRSSF	45.11
108mm (C)	2	0	20420	PRSSF	53.49

**SS69 straight male union connector press-fit x BSP taper male thread**



dimension	pack 1 qty	pack 2 qty	code	price cat	£ each
15mm x 1/2" (A)	2	50	11774	PRSSF	34.18
18mm x 1/2" (A)	2	60	11776	PRSSF	37.78
22mm x 1/2"	2	40	11721	PRSSF	49.49
22mm x 3/4"	2	40	11779	PRSSF	50.66
22mm x 1"	2	30	11764	PRSSF	52.66
28mm x 1"	2	30	11781	PRSSF	67.50
35mm x 1 1/4"	2	16	11782	PRSSF	86.10
42mm x 1 1/2"	2	12	11783	PRSSF	99.57
54mm x 2"	2	4	11784	PRSSF	172.17

**SS68FF flat faced union adaptor, press fit x BSP female union end**



dimension	pack 1 qty	pack 2 qty	code	price cat	£ each
22mm x 1"	10	60	11891	PRSSF	45.07
35mm x 1 1/2"	4	32	11893	PRSSF	70.07
42mm x 1 3/4"	4	12	11894	PRSSF	88.34
54mm x 2 3/8"	4	8	11895	PRSSF	111.85

**SS69F straight female union connector press-fit x BSP parallel female thread**



dimension	pack 1 qty	pack 2 qty	code	price cat	£ each
15mm x 1/2" (A)	2	60	11785	PRSSF	34.18
18mm x 1/2" (A)	2	40	11787	PRSSF	37.78
22mm x 3/4"	2	40	11789	PRSSF	50.66
22mm x 1"	2	30	11798	PRSSF	52.66
28mm x 1"	2	26	11791	PRSSF	67.50
35mm x 1 1/4"	1	20	11792	PRSSF	86.10
42mm x 1 1/2"	2	8	11793	PRSSF	99.57
54mm x 2"	2	4	11794	PRSSF	172.17

**stainless**

**SS75 expansion axial compensator, press-fit x press-fit**



dimension	pack 1 qty	pack 2 qty	code	price cat	£ each
15mm	10	60	11540	PRSSF	151.19
18mm	10	60	11541	PRSSF	169.68
22mm	5	30	11542	PRSSF	185.11
28mm	5	20	11543	PRSSF	203.62
35mm	4	16	11544	PRSSF	246.82
42mm	2	12	11545	PRSSF	339.37
54mm	2	4	11546	PRSSF	408.80

**SS76 expansion axial compensator, drum ends**



dimension	pack 1 qty	pack 2 qty	code	price cat	£ each
76.1mm	2	0	20465	PRSSF	632.48
108mm	2	0	20467	PRSSF	1172.38

**SS80 straight flexible hose**



dimension	pack 1 qty	pack 2 qty	code	price cat	£ each
22 x 1000mm	10	0	11575	PRSSF	100.04
22 x 1500mm	10	0	11576	PRSSF	113.61
22 x 2000mm	10	0	11577	PRSSF	126.88
28 x 1000mm	10	0	11578	PRSSF	112.92
28 x 1500mm	10	0	11579	PRSSF	130.33
28 x 2000mm	10	0	11580	PRSSF	148.45

**SS82 bent flexible hose**



dimension	pack 1 qty	pack 2 qty	code	price cat	£ each
22mm x 800mm	10	0	11581	PRSSF	117.82
22mm x 1000mm	10	0	11582	PRSSF	123.46
22mm x 1500mm	10	0	11583	PRSSF	137.47
28mm x 800mm	10	0	11584	PRSSF	127.27
28mm x 1000mm	10	0	11585	PRSSF	134.55
28mm x 1500mm	10	0	11586	PRSSF	153.05

**stainless**

**SS600 stainless steel 316 HWG+S tube.  
6m lengths**



dimension	pack 1 qty	pack 2 qty	code	price cat	£ each
15 x 1.0mm (6m)	6	840	25050	PRSST	12.38
18 x 1.0mm (6m)	6	450	25051	PRSST	14.81
22 x 1.2mm (6m)	6	366	25052	PRSST	22.06
28 x 1.2mm (6m)	6	222	25053	PRSST	24.89
35 x 1.5mm (6m)	6	222	25054	PRSST	37.30
42 x 1.5mm (6m)	6	114	25055	PRSST	47.74
54 x 1.5mm (6m)	6	114	25056	PRSST	62.91
15 x 1.0mm (3m)	30	300	6118068	PRSST	13.01
18 x 1.0mm (3m)	30	300	6118079	PRSST	15.56
22 x 1.2mm (3m)	30	300	6118081	PRSST	23.17
28 x 1.2mm (3m)	30	300	6118090	PRSST	26.13
35 x 1.5mm (3m)	30	300	6118101	PRSST	39.15
42 x 1.5mm (3m)	30	300	6118112	PRSST	50.13
54 x 1.5mm (3m)	30	300	6118123	PRSST	66.06

**SS630 stainless steel 444 HS tube.  
6m lengths**



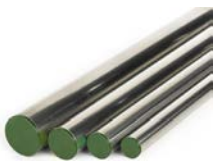
dimension	pack 1 qty	pack 2 qty	code	price cat	£ each
15 x 1.0mm	6	762	24000	PRSST	9.21
18 x 1.0mm	6	366	24001	PRSST	11.01
22 x 1.2mm	6	366	25072	PRSST	15.08
28 x 1.2mm	6	222	25073	PRSST	18.52
35 x 1.5mm	6	222	25074	PRSST	27.76
42 x 1.5mm	6	114	25075	PRSST	35.54
54 x 1.5mm	6	114	25076	PRSST	44.90

**SS650 stainless steel 304 HS tube**



dimension	pack 1 qty	pack 2 qty	code	price cat	£ each
76.1 x 2.0mm	6	144	24002	PRSST	78.49
88.9 x 2.0mm	6	96	24003	PRSST	89.77
108 x 2.0mm	6	78	24004	PRSST	108.20
139.7 x 2.0mm	6	42	11502	PRLST	153.40
168.3 x 2.0mm	6	54	11503	PRLST	185.92

**SS620 stainless steel 316 HWG+S tube.  
6m lengths**



dimension	pack 1 qty	pack 2 qty	code	price cat	£ each
76.1 x 2.0mm	6	144	25026	PRSST	117.20
88.9 x 2.0mm	6	96	25028	PRSST	134.09
108 x 2.0mm	6	78	25030	PRSST	161.63
139.7 x 2.0mm	6	42	11500	PRLST	237.61
168.3 x 2.0mm	6	54	11501	PRLST	260.64

**carbon**

**SC1 straight coupling, press-fit x press-fit**



dimension	pack 1 qty	pack 2 qty	code	price cat	£ each
15mm (A)	10	140	20136	PRSSF	2.69
18mm (A)	10	140	20137	PRSSF	2.82
22mm	10	80	20138	PRSSF	3.25
28mm	10	60	20139	PRSSF	4.09
35mm	5	40	20140	PRSSF	6.84
42mm	4	24	20141	PRSSF	9.18
54mm	4	16	20142	PRSSF	10.83
66.7mm (E)	2	4	20662	PRSSF	40.44
76.1mm (E)	4	0	20620	PRSSF	49.15
88.9mm (E)	4	0	20621	PRSSF	63.47
108mm (D) (E)	2	0	20622	PRSSF	87.34

**SC1FMF female metric flange PN16. Press-fit x steel flange to EN1092-1:1997 (BS4504)**



dimension	pack 1 qty	pack 2 qty	code	price cat	£ each
35mm (4 holes)	1	6	20562	PRCAF	69.48
42mm (4 holes)	1	4	20563	PRCAF	81.90
54mm (4 holes)	1	2	20564	PRCAF	101.13
66.7mm (4 holes)	1	2	20685	PRSSF	114.81
76.1mm (4 holes)	1	0	20659	PRSSF	185.28
88.9mm (8 holes)	1	0	20660	PRSSF	220.12
108mm (8 holes)	1	0	20661	PRSSF	261.33

**SC1R straight reduced coupling, press-fit x press-fit**



dimension	pack 1 qty	pack 2 qty	code	price cat	£ each
28 x 22mm	10	80	20154	PRCAF	14.59

**SC1FMF6 female metric flange PN6**



dimension	pack 1 qty	pack 2 qty	code	price cat	£ each
66.7mm	1	2	20734	PRCAF	114.81
76.1mm	1	0	20735	PRCAF	185.28
88.9mm	1	0	20736	PRCAF	220.12
108mm	1	0	20737	PRCAF	261.33

**carbon**

**SC1 straight coupling slip pattern, press-fit x press-fit**



dimension	pack 1 qty	pack 2 qty	code	price cat	£ each
15mm (A)	10	140	20144	PRSSF	3.07
18mm (A)	10	100	20145	PRSSF	3.54
22mm	10	60	20146	PRSSF	3.90
28mm	5	40	20147	PRSSF	4.92
35mm	5	20	20148	PRSSF	10.62
42mm	4	16	20149	PRSSF	11.55
54mm	2	8	20150	PRSSF	13.78
66.7mm (E)	2	4	20663	PRSSF	48.43
76.1mm (E)	2	0	20623	PRSSF	104.34
88.9mm (E)	2	0	20624	PRSSF	117.80
108mm (D) (E)	2	0	20625	PRSSF	141.38

**SC2 straight female connector, press-fit x ISO 7 female thread**



dimension	pack 1 qty	pack 2 qty	code	price cat	£ each
15mm x 1/2" (A)	10	130	20237	PRSSF	8.32
18mm x 1/2" (A)	10	120	20238	PRSSF	8.35
22mm x 1/2"	10	100	20245	PRCAF	9.97
22mm x 3/4"	10	100	20240	PRSSF	9.97
28mm x 1/2"	10	60	20244	PRCAF	12.62
28mm x 3/4"	10	60	20246	PRCAF	12.62
28mm x 1"	10	60	20241	PRSSF	12.62
35mm x 1"	10	40	20367	PRCAF	18.90
35mm x 1 1/4"	10	30	20247	PRCAF	16.21
42mm x 1 1/2"	4	24	20209	PRCAF	23.33
54mm x 2"	4	12	20210	PRCAF	31.56

**SC1V transition for grooved coupling, press-fit x groove**



dimension	pack 1 qty	pack 2 qty	code	price cat	£ each
28mm x 34mm	10	30	20187	PRCAF	28.20
35mm x 42mm	10	30	20188	PRCAF	33.84
42mm x 48mm	5	20	20189	PRCAF	47.37
54mm x 60mm	5	15	20190	PRCAF	77.56
76.1mm x 76.1mm (E)	2	0	20731	PRCAF	114.19
88.9mm x 88.9mm (E)	2	0	20732	PRCAF	162.45
108mm x 114mm (D) (E)	2	0	20733	PRCAF	250.16

**SC2LC slip long connector, press-fit x BSP parallel female thread**



dimension	pack 1 qty	pack 2 qty	code	price cat	£ each
22mm x 3/4"	10	60	20324	PRCAF	30.32
28mm x 3/4"	10	40	20326	PRCAF	37.77

**carbon**

**SC3 straight male connector, press-fit x BSP taper male thread**



dimension	pack 1 qty	pack 2 qty	code	price cat	£ each
15mm x 3/8" (A)	10	200	20227	PRSSF	8.32
15mm x 1/2" (A)	10	200	20228	PRSSF	8.32
18mm x 1/2" (A)	10	160	20229	PRSSF	8.59
18mm x 3/4" (A)	10	100	20230	PRSSF	9.97
22mm x 1/2"	10	70	20242	PRCAF	9.97
22mm x 3/4"	10	100	20231	PRSSF	9.97
22mm x 1"	10	60	20243	PRCAF	10.75
28mm x 3/4"	10	60	20236	PRCAF	12.62
28mm x 1"	10	60	20232	PRSSF	12.62
35mm x 1"	10	40	20567	PRCAF	16.21
35mm x 1 1/4"	5	40	20233	PRSSF	16.21
42mm x 1 1/2"	4	24	20234	PRSSF	18.08
54mm x 2"	4	12	20235	PRSSF	28.05
66.7mm x 2 1/2" (E)	2	4	20664	PRSSF	112.60
76.1mm x 2 1/2" (D) (E)	2	0	20713	PRCAF	194.84
88.9mm x 3" (D) (E)	2	0	20714	PRCAF	265.16

**SC6 reducer, larger end male for insertion into fitting x press-fit**



dimension	pack 1 qty	pack 2 qty	code	price cat	£ each
18 x 15mm (A)	10	200	20213	PRSSF	2.45
22 x 15mm (A)	10	140	20215	PRSSF	2.45
22 x 18mm (A)	10	120	20216	PRSSF	2.67
28 x 15mm (A)	10	70	20217	PRSSF	3.25
28 x 18mm (A)	10	100	20218	PRSSF	3.25
28 x 22mm	10	80	20219	PRSSF	3.37
35 x 22mm	5	50	20220	PRSSF	3.77
35 x 28mm	5	60	20221	PRSSF	4.05
42 x 22mm (C)	4	24	20248	PRCAF	6.63
42 x 28mm	4	24	20212	PRCAF	7.35
42 x 35mm	4	24	20222	PRSSF	8.77
54 x 22mm (C)	4	16	20223	PRSSF	25.39
54 x 28mm (C)	4	16	20224	PRSSF	25.52
54 x 35mm	4	16	20226	PRCAF	26.19
54 x 42mm	4	16	20225	PRSSF	26.86
66.7 x 28mm (E)	2	4	20665	PRSSF	42.28
66.7 x 35mm (E)	2	4	20666	PRSSF	39.52
66.7 x 42mm (E)	2	4	20667	PRSSF	39.81
66.7 x 54mm (E)	2	4	20668	PRSSF	42.24
76.1 x 42mm (E)	4	0	20715	PRCAF	47.40
76.1 x 54mm (E)	4	0	20639	PRSSF	56.73
76.1 x 66.7mm (E)	2	4	20669	PRSSF	44.86
88.9 x 54mm (E)	4	0	20640	PRSSF	69.02
88.9 x 66.7mm (E)	2	4	20670	PRSSF	67.80
88.9 x 76.1mm (E)	4	0	20641	PRSSF	88.57
108 x 66.7mm (D) (E)	2	4	20671	PRSSF	86.63
108 x 76.1mm (D) (E)	2	0	20642	PRSSF	91.80
108 x 88.9mm (D) (E)	2	0	20643	PRSSF	102.66

**carbon**

SC7 female adaptor, male end for insertion into a fitting x BSP parallel female thread



dimension	pack 1 qty	pack 2 qty	code	price cat	£ each
15mm x 1/2"	10	150	20574	PRCAF	7.40
22mm x 1/2"	10	70	20256	PRCAF	8.71
22mm x 3/4"	10	100	20257	PRCAF	10.11

SC12 elbow, press-fit x press-fit



dimension	pack 1 qty	pack 2 qty	code	price cat	£ each
15mm (A)	10	150	20155	PRSSF	3.87
18mm (A)	10	90	20156	PRSSF	4.54
22mm	10	60	20157	PRSSF	5.09
28mm	5	30	20158	PRSSF	6.94
35mm	5	20	20159	PRSSF	17.32
42mm	2	8	20160	PRSSF	27.73
54mm	2	8	20161	PRSSF	33.14
66.7mm (E)	1	2	20672	PRSSF	62.12
76.1mm (E)	2	0	20626	PRSSF	109.37
88.9mm (E)	2	0	20627	PRSSF	133.03
108mm (D) (E)	2	0	20628	PRSSF	181.76

SC12S street elbow, press-fit x male end for insertion into fitting



dimension	pack 1 qty	pack 2 qty	code	price cat	£ each
15mm (A)	10	120	20163	PRSSF	3.87
18mm (A)	10	80	20164	PRSSF	4.54
22mm	10	60	20165	PRSSF	5.09
28mm	5	30	20166	PRSSF	6.94
35mm	5	20	20167	PRSSF	17.32
42mm	2	8	20168	PRSSF	27.73
54mm	2	6	20169	PRSSF	33.14
66.7mm (E)	1	2	20673	PRSSF	62.12
76.1mm (E)	2	0	20629	PRSSF	109.37
88.9mm (E)	2	0	20630	PRSSF	133.03
108mm (D) (E)	2	0	20631	PRSSF	181.76

SC13 male elbow, press-fit x BSP taper male thread



dimension	pack 1 qty	pack 2 qty	code	price cat	£ each
15mm x 1/2" (A)	10	100	20199	PRSSF	10.08
18mm x 1/2" (A)	10	60	20200	PRSSF	10.92
22mm x 3/4"	10	50	20201	PRSSF	13.40
28mm x 1"	5	30	20202	PRSSF	16.38
35mm x 1 1/4"	5	10	20206	PRSSF	24.84
42mm x 1 1/2"	2	12	20204	PRSSF	41.54
54mm x 2"	2	8	20205	PRSSF	61.55

**carbon**

**SC13A angle adaptor, press-fit x BSP taper male thread**



dimension	pack 1 qty	pack 2 qty	code	price cat	£ each
22mm x 3/4"	10	60	20208	PRCAF	19.97

**SC14 elbow, press-fit x BSP parallel female thread**



dimension	pack 1 qty	pack 2 qty	code	price cat	£ each
22mm x 1/2"	10	50	20345	PRCAF	24.17
28mm x 1/2"	5	30	20347	PRCAF	27.14
28mm x 1"	5	30	20349	PRCAF	33.90

**SC14A angle adaptor, press-fit x BSP parallel female thread**



dimension	pack 1 qty	pack 2 qty	code	price cat	£ each
22mm x 1/2"	10	50	20355	PRCAF	24.20
28mm x 1/2"	5	30	20356	PRCAF	28.47
35mm x 1/2"	5	10	20357	PRCAF	38.47

**SC19S elbow, male x male**



dimension	pack 1 qty	pack 2 qty	code	price cat	£ each
15mm	10	70	20584	PRCAF	8.13
22mm	10	30	20370	PRCAF	12.39
28mm	5	20	20371	PRCAF	16.58
35mm	2	8	20372	PRCAF	27.43
42mm	2	4	20373	PRCAF	39.54
54mm	2	0	20374	PRCAF	54.46

**SC21 obtuse elbow, press-fit x press-fit**



dimension	pack 1 qty	pack 2 qty	code	price cat	£ each
15mm (A)	10	150	20170	PRSSF	4.61
18mm (A)	10	120	20171	PRSSF	4.85
22mm	10	70	20172	PRSSF	5.14
28mm	10	40	20173	PRSSF	6.99
35mm	5	25	20174	PRSSF	13.76
42mm	4	16	20175	PRSSF	17.22
54mm	2	8	20176	PRSSF	19.48
66.7mm (E)	1	2	20674	PRSSF	65.46
76.1mm (E)	2	0	20632	PRSSF	86.84
88.9mm (E)	2	0	20633	PRSSF	110.86
108mm (D) (E)	2	0	20634	PRSSF	159.30

**carbon**

SC21S obtuse street elbow, press-fit x male end for insertion into fitting



dimension	pack 1 qty	pack 2 qty	code	price cat	£ each
15mm (A)	10	150	20177	PRSSF	4.21
18mm (A)	10	120	20178	PRSSF	4.31
22mm	10	60	20179	PRSSF	4.62
28mm	10	40	20180	PRSSF	6.99
35mm	5	25	20181	PRSSF	12.62
42mm	4	16	20182	PRSSF	16.87
54mm	2	8	20183	PRSSF	19.26
66.7mm (E)	1	2	20675	PRSSF	54.92
76.1mm (E)	2	0	20635	PRSSF	95.94
88.9mm (E)	2	0	20636	PRSSF	114.53
108mm (D) (E)	2	0	20637	PRSSF	156.63

SC24 equal tee, press-fit on all ends



dimension	pack 1 qty	pack 2 qty	code	price cat	£ each
15mm (A)	10	80	20249	PRSSF	7.37
18mm (A)	10	40	20250	PRSSF	7.94
22mm	10	40	20251	PRSSF	8.54
28mm	5	25	20252	PRSSF	11.43
35mm	5	15	20253	PRSSF	17.81
42mm	4	8	20254	PRSSF	26.32
54mm	2	6	20255	PRSSF	31.55
66.7mm (E)	1	2	20676	PRSSF	125.52
76.1mm (E)	2	0	20644	PRSSF	183.84
88.9mm (E)	2	0	20645	PRSSF	212.49
108mm (D) (E)	2	0	20646	PRSSF	258.67

SC22S partial crossover, both ends male for insertion into fitting



dimension	pack 1 qty	pack 2 qty	code	price cat	£ each
15mm (A)	10	70	20193	PRSSF	4.22
18mm (A)	10	60	20194	PRSSF	4.61
22mm	10	40	20195	PRSSF	5.25
28mm	5	20	20196	PRSSF	6.42

**carbon**

**SC25 tee, reduced branch, press-fit on all ends**



dimension	pack 1 qty	pack 2 qty	code	price cat	£ each
18 x 18 x 15mm (A)	10	60	20258	PRSSF	7.94
22 x 22 x 15mm (A)	10	50	20260	PRSSF	8.35
22 x 22 x 18mm (A)	10	50	20261	PRSSF	8.54
28 x 28 x 15mm (A)	5	30	20262	PRSSF	11.31
28 x 28 x 18mm (A)	5	30	20263	PRSSF	11.71
28 x 28 x 22mm	5	30	20264	PRSSF	12.29
35 x 35 x 15mm (A)	5	20	20265	PRSSF	16.59
35 x 35 x 18mm (A)	5	20	20266	PRSSF	17.64
35 x 35 x 22mm	5	20	20267	PRSSF	17.93
35 x 35 x 28mm	5	20	20268	PRSSF	18.21
42 x 42 x 22mm	4	12	20269	PRSSF	24.04
42 x 42 x 28mm	4	12	20270	PRSSF	24.92
42 x 42 x 35mm	4	12	20271	PRSSF	24.32
54 x 54 x 22mm	2	8	20272	PRSSF	28.65
54 x 54 x 28mm	2	8	20273	PRSSF	29.21
54 x 54 x 35mm	2	8	20274	PRSSF	30.06
54 x 54 x 42mm	2	8	20275	PRSSF	31.52
66.7 x 66.7 x 28mm (E)	1	2	20677	PRSSF	121.58
66.7 x 66.7 x 35mm (E)	1	2	20678	PRSSF	122.71
66.7 x 66.7 x 42mm (E)	1	2	20679	PRSSF	126.00
66.7 x 66.7 x 54mm (E)	1	2	20680	PRSSF	128.43
76.1 x 76.1 x 22mm (E)	2	0	20686	PRCAF	198.80
76.1 x 76.1 x 28mm (E)	2	0	20687	PRCAF	198.80
76.1 x 76.1 x 35mm (E)	2	0	20688	PRCAF	198.80
76.1 x 76.1 x 42mm (E)	2	0	20689	PRCAF	198.80
76.1 x 76.1 x 54mm (E)	2	0	20647	PRSSF	196.97
76.1 x 76.1 x 66.7mm (E)	1	1	20681	PRSSF	185.83
88.9 x 88.9 x 22mm (E)	2	0	20690	PRCAF	216.07
88.9 x 88.9 x 28mm (E)	2	0	20691	PRCAF	216.07
88.9 x 88.9 x 35mm (E)	2	0	20692	PRCAF	216.07
88.9 x 88.9 x 42mm (E)	2	0	20693	PRCAF	216.07
88.9 x 88.9 x 54mm (E)	2	0	20694	PRCAF	216.07
88.9 x 88.9 x 66.7mm (E)	1	1	20682	PRSSF	203.27
88.9 x 88.9 x 76.1mm (E)	2	0	20648	PRSSF	215.48
108 x 108 x 22mm (D) (E)	2	0	20695	PRCAF	241.99
108 x 108 x 28mm (D) (E)	2	0	20696	PRCAF	241.99
108 x 108 x 35mm (D) (E)	2	0	20697	PRCAF	259.26
108 x 108 x 42mm (D) (E)	2	0	20698	PRCAF	259.26
108 x 108 x 54mm (D) (E)	2	0	20699	PRCAF	259.26
108 x 108 x 76.1mm (D) (E)	2	0	20700	PRCAF	259.26
108 x 108 x 88.9mm (D) (E)	2	0	20649	PRSSF	264.35

**SC28 tee, both ends reduced, press-fit on all ends**



dimension	pack 1 qty	pack 2 qty	code	price cat	£ each
15 x 15 x 22mm (A)	10	60	20710	PRCAF	13.07
22 x 22 x 28mm	5	30	20712	PRCAF	13.34

**SC30 female branch tee, press-fit x BSP parallel female branch**



dimension	pack 1 qty	pack 2 qty	code	price cat	£ each
15mm x 1/2" (A)	10	70	20281	PRSSF	10.55
18mm x 1/2" (A)	10	50	20282	PRSSF	10.55
22mm x 1/2"	10	50	20283	PRSSF	11.61
22mm x 3/4"	10	40	20288	PRCAF	13.06
28mm x 1/2"	5	30	20284	PRSSF	13.48
28mm x 3/4"	5	30	20289	PRCAF	15.72
28mm x 1"	5	30	20279	PRCAF	18.40
35mm x 1/2"	5	20	20285	PRSSF	18.40
35mm x 3/4"	5	20	20290	PRCAF	22.42
35mm x 1"	5	20	20280	PRCAF	28.65
42mm x 1/2"	4	16	20286	PRSSF	28.65
42mm x 3/4"	4	12	20291	PRCAF	30.26
42mm x 1"	4	12	20294	PRCAF	31.14
54mm x 1/2"	2	8	20287	PRSSF	31.52
54mm x 3/4"	2	8	20292	PRCAF	39.11
54mm x 1"	2	8	20293	PRCAF	39.11
66.7mm x 3/4" (E)	1	2	20683	PRSSF	104.08
76.1mm x 3/4" (E)	2	0	20650	PRSSF	161.23
88.9mm x 3/4" (E)	2	0	20651	PRSSF	175.15
108mm x 3/4" (D) (E)	2	0	20652	PRSSF	210.74

**carbon**

**SC50 cross, press-fit all ends**



dimension	pack 1 qty	pack 2 qty	code	price cat	£ each
35mm	2	8	20327	PRCAF	62.79
42mm	2	8	20328	PRCAF	78.20
54mm	2	4	20329	PRCAF	91.61
54 x 28mm	2	4	20336	PRCAF	91.62

**SC51 pass, press-fit all ends**



dimension	pack 1 qty	pack 2 qty	code	price cat	£ each
15mm	5	40	20593	PRCAF	17.17
22 x 15mm	10	30	20595	PRCAF	19.76
28 x 15mm	5	15	20597	PRCAF	22.28
28 x 22mm	5	20	20333	PRCAF	26.42

**SC61 stop end, for use on carbon steel tube**



dimension	pack 1 qty	pack 2 qty	code	price cat	£ each
15mm (A)	20	80	20295	PRSSF	4.92
18mm (A)	20	300	20296	PRSSF	5.25
22mm	10	150	20297	PRSSF	5.61
28mm	10	130	20298	PRSSF	8.32
35mm	5	75	20299	PRSSF	9.47
42mm	4	48	20300	PRSSF	14.86
54mm	4	32	20301	PRSSF	16.91
66.7mm (E)	1	4	20684	PRSSF	40.25
76.1mm (E)	2	0	20656	PRSSF	33.25
88.9mm (E)	2	0	20657	PRSSF	42.67
108mm (D) (E)	2	0	20658	PRSSF	50.65

**SC68FF half union, press-fit x BSP female union end**



dimension	pack 1 qty	pack 2 qty	code	price cat	£ each
22mm x 1"	10	60	20337	PRCAF	25.86
28mm x 1 1/4"	10	40	20338	PRCAF	29.53
35mm x 1 1/2"	4	32	20339	PRCAF	35.28
54mm x 2 3/8"	4	8	20341	PRCAF	64.34

**carbon**

**SC69C straight male union connector  
press-fit x BSP taper male thread**



dimension	pack 1 qty	pack 2 qty	code	price cat	£ each
15mm x 1/2"	2	50	20380	PRCAF	10.55
18mm x 1/2"	2	60	20381	PRCAF	11.95
22mm x 3/4"	2	40	20382	PRCAF	15.52
28mm x 1"	2	30	20383	PRCAF	24.62
35mm x 1 1/4"	2	16	20384	PRCAF	33.57
42mm x 1 1/2"	2	12	20385	PRCAF	50.93
54mm x 2"	2	4	20312	PRSSF	97.67

**SC640 carbon steel galvanised  
heating tube. 3m & 6m lengths**



dimension	pack 1 qty	pack 2 qty	code	price cat	£ each
15mm x 1.2mm	30	630	45080	PRCAT	4.14
18mm x 1.2mm	30	750	45081	PRCAT	4.96
22mm x 1.5mm	30	630	45082	PRCAT	6.60
28mm x 1.5mm	30	300	45083	PRCAT	9.30
35mm x 1.5mm	30	210	45084	PRCAT	12.03
42mm x 1.5mm	30	210	45085	PRCAT	16.44
54mm x 1.5mm	30	180	45086	PRCAT	21.34
12mm x 1.2mm	6	1290	25079	PRCAT	3.45
15mm x 1.2mm	6	1290	25080	PRSSST	3.75
18mm x 1.2mm	6	1524	25081	PRSSST	4.50
22mm x 1.5mm	6	1290	25082	PRSSST	6.01
28mm x 1.5mm	6	624	25083	PRSSST	8.47
35mm x 1.5mm	6	402	25084	PRSSST	10.95
42mm x 1.5mm	6	402	25085	PRSSST	14.94
54mm x 1.5mm	6	402	25086	PRSSST	19.39
66.7mm x 1.5mm	6	228	25090	PRSSST	27.17
76.1mm x 2.0mm	6	234	25087	PRSSST	42.79
88.9mm x 2.0mm	6	114	25088	PRSSST	48.43
108mm x 2.0mm	6	114	25089	PRSSST	56.55

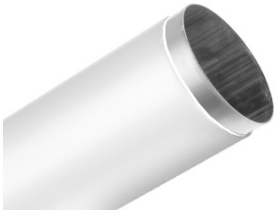
**SC69F straight female union connector  
press-fit x BSP parallel female thread**



dimension	pack 1 qty	pack 2 qty	code	price cat	£ each
15mm x 1/2" (A)	2	50	20313	PRSSF	22.06
18mm x 1/2" (A)	2	60	20315	PRSSF	23.81
22mm x 3/4"	2	40	20317	PRSSF	32.63
28mm x 1"	2	30	20319	PRSSF	36.30
35mm x 1 1/4"	2	16	20320	PRSSF	51.62
42mm x 1 1/2"	2	12	20321	PRSSF	76.32
54mm x 2"	2	4	20322	PRSSF	97.67

**carbon**

SC660 plastic coated galvanised carbon steel heating tube. 6m lengths. Wall thickness dimensions include plastic coating of 1mm thickness



dimension	pack 1 qty	pack 2 qty	code	price cat	£ each
15mm x 2.2mm	6	840	25060	PRSST	5.50
18mm x 2.2mm	6	450	25061	PRSST	6.07
22mm x 2.5mm	6	360	25062	PRSST	7.94
28mm x 2.5mm	6	300	25063	PRSST	10.56
35mm x 2.5mm	6	180	25064	PRSST	13.20
42mm x 2.5mm	6	150	25065	PRSST	17.02
54mm x 2.5mm	6	90	25066	PRSST	21.88

SC645 galvanised sprinkler tube. 6m lengths



dimension	pack 1 qty	pack 2 qty	code	price cat	£ each
22mm x 1.5mm	30	630	25102	PRCAT	6.61
28mm x 1.5mm	30	300	25103	PRCAT	9.30
35mm x 1.5mm	30	210	25104	PRCAT	12.02
42mm x 1.5mm	30	210	25105	PRCAT	16.44
54mm x 1.5mm	30	180	25106	PRCAT	19.39
22mm x 1.5mm	6	366	25094	PRCAT	6.61
28mm x 1.5mm	6	222	25095	PRCAT	9.30
35mm x 1.5mm	6	222	25096	PRCAT	12.02
42mm x 1.5mm	6	114	25097	PRCAT	16.44
54mm x 1.5mm	6	114	25098	PRCAT	19.39
76.1mm x 2.0mm	6	144	25099	PRCAT	42.79
88.9mm x 2.0mm	6	96	25100	PRCAT	48.43
108mm x 2.0mm	6	78	25101	PRCAT	56.55

**gas**

**SG1/G7270 straight coupling, press-fit x press-fit**



dimension	pack 1 qty	pack 2 qty	code	price cat	£ each
15mm	5	100	39700	PRSCU	3.19
18mm	5	100	39699	PRSCU	4.44
22mm	5	70	39701	PRSCU	4.91
28mm	5	50	39702	PRSCU	9.81
35mm	1	20	39703	PRSCU	12.44
42mm	1	10	39704	PRSCU	22.43
54mm	1	10	39705	PRSCU	28.64
66.7mm	1	0	39302	PRSCU	69.07
76.1mm	1	0	39303	PRSCU	90.81
108mm	1	0	39305	PRSCU	157.12

**SG1FMM/G7520 composite male metric flange PN16. Male end for insertion into fitting x powder coated steel flange to EN1092-1:1997 (BS4504)**



dimension	pack 1 qty	pack 2 qty	code	price cat	£ each
66.7mm (4 holes)	1	0	39395	PRSCU	187.15
76.1mm (8 holes)	1	0	39396	PRSCU	218.99
108mm (8 holes)	1	0	39398	PRSCU	259.13

**SG1 Slip/G7270S straight coupling slip pattern, press-fit x press-fit**



dimension	pack 1 qty	pack 2 qty	code	price cat	£ each
15mm	5	75	39710	PRSCU	6.32
18mm	5	75	39709	PRSCU	8.22
22mm	5	50	39711	PRSCU	9.81
28mm	5	50	39712	PRSCU	14.76
35mm	1	15	39713	PRSCU	18.71
42mm	1	5	39714	PRSCU	26.91
54mm	1	10	39715	PRSCU	34.33
66.7mm	1	0	39307	PRSCU	100.14
76.1mm	1	0	39308	PRSCU	121.83
108mm	1	0	39310	PRSCU	204.88

**SG1FMF/G7510 composite female metric flange PN16. Press-fit x powder coated steel flange to EN1092-1:1997 (BS4504)**



dimension	pack 1 qty	pack 2 qty	code	price cat	£ each
66.7mm (4 holes)	1	0	39281	PRSCU	206.38
76.1mm (8 holes)	1	0	39282	PRSCU	246.37
108mm (8 holes)	1	0	39284	PRSCU	292.56

**gas**

**SG2/G6270G straight female connector, press-fit x BSP parallel female thread**



**SG3/G6243G straight male connector, press-fit x BSP taper male thread**



dimension	pack 1 qty	pack 2 qty	code	price cat	£ each
15mm x 1/2"	5	100	39720	PRSCU	12.76
15mm x 3/4"	5	100	39721	PRSCU	13.38
18mm x 1/2"	5	100	39716	PRSCU	17.85
18mm x 3/4"	5	100	39717	PRSCU	20.07
22mm x 1/2"	5	100	39722	PRSCU	19.72
22mm x 3/4"	5	75	39723	PRSCU	16.81
28mm x 1"	5	50	39724	PRSCU	22.68
35mm x 1 1/4"	1	20	39725	PRSCU	44.25
42mm x 1 1/2"	1	10	39726	PRSCU	63.29
54mm x 2"	1	8	39727	PRSCU	108.49

dimension	pack 1 qty	pack 2 qty	code	price cat	£ each
15mm x 1/2"	5	100	39730	PRSCU	10.08
15mm x 3/4"	5	100	39731	PRSCU	7.36
18mm x 1/2"	5	125	39728	PRSCU	12.73
18mm x 3/4"	5	100	39729	PRSCU	13.25
22mm x 1/2"	5	100	39732	PRSCU	8.79
22mm x 3/4"	5	70	39733	PRSCU	14.47
22mm x 1"	5	75	39734	PRSCU	9.22
28mm x 3/4"	5	75	39737	PRSCU	20.67
28mm x 1"	5	50	39735	PRSCU	19.35
28mm x 1 1/4"	5	50	39736	PRSCU	25.38
35mm x 1"	1	20	39738	PRSCU	34.43
35mm x 1 1/4"	1	20	39739	PRSCU	34.94
42mm x 1 1/4"	1	20	39741	PRSCU	63.58
42mm x 1 1/2"	1	15	39740	PRSCU	46.86
54mm x 2"	1	10	39742	PRSCU	90.44
66.7mm x 2 1/2"	1	0	39311	PRSCU	173.63
76.1mm x 3"	1	0	39313	PRSCU	300.48
108mm x 4"	1	0	39315	PRSCU	520.26

**gas**

**SG6/G7243 reducer, larger end male for insertion into fitting x press-fit**



dimension	pack 1 qty	pack 2 qty	code	price cat	£ each
18 x 15mm	5	100	39761	PRSCU	3.27
22 x 15mm	5	90	39750	PRSCU	3.68
22 x 18mm	5	80	39762	PRSCU	3.43
28 x 15mm	5	60	39751	PRSCU	9.43
28 x 18mm	5	75	39763	PRSCU	9.61
28 x 22mm	5	60	39752	PRSCU	9.78
35 x 22mm	1	30	39753	PRSCU	11.69
35 x 28mm	1	25	39754	PRSCU	12.96
42 x 22mm	1	20	39755	PRSCU	20.21
42 x 28mm	1	20	39756	PRSCU	19.25
42 x 35mm	1	10	39757	PRSCU	19.25
54 x 28mm	1	10	39760	PRSCU	26.03
54 x 35mm	1	15	39758	PRSCU	26.03
54 x 42mm	1	10	39759	PRSCU	26.03
66.7 x 28mm	1	0	39319	PRSCU	75.84
66.7 x 35mm	1	0	39320	PRSCU	75.84
66.7 x 42mm	1	0	39321	PRSCU	75.84
66.7 x 54mm	1	0	39322	PRSCU	91.77
76.1 x 35mm	1	0	39323	PRSCU	110.82
76.1 x 42mm	1	0	39324	PRSCU	110.82
76.1 x 54mm	1	0	39325	PRSCU	101.30
76.1 x 66.7mm	1	0	39327	PRSCU	122.94
108 x 42mm	1	0	39334	PRSCU	162.54
108 x 54mm	1	0	39335	PRSCU	136.54
108 x 66.7mm	1	0	39337	PRSCU	166.65
108 x 76.1mm	1	0	39338	PRSCU	146.85

**SG11/G6330 union coupling, press-fit x press-fit**



dimension	pack 1 qty	pack 2 qty	code	price cat	£ each
15mm	1	40	39770	PRSCU	46.02
22mm	1	20	39771	PRSCU	52.12
28mm	1	20	39772	PRSCU	57.98
35mm	1	10	39773	PRSCU	64.34
42mm	1	10	39774	PRSCU	88.89
54mm	1	5	39775	PRSCU	97.28

**SG12/G7002A elbow, press-fit x press-fit**



dimension	pack 1 qty	pack 2 qty	code	price cat	£ each
15mm	5	80	39780	PRSCU	3.39
18mm	5	70	39779	PRSCU	5.17
22mm	5	60	39781	PRSCU	5.68
28mm	5	40	39782	PRSCU	12.37
35mm	1	10	39783	PRSCU	24.62
42mm	1	10	39784	PRSCU	46.34
54mm	1	8	39785	PRSCU	64.24
66.7mm	1	0	39341	PRSCU	110.17
76.1mm	1	0	39342	PRSCU	173.02
108mm	1	0	39344	PRSCU	323.14

**gas**

**SG12S/G7001A street elbow, press-fit x male end for insertion into fitting**



dimension	pack 1 qty	pack 2 qty	code	price cat	£ each
15mm	5	80	39790	PRSCU	3.43
18mm	5	70	39789	PRSCU	5.67
22mm	5	50	39791	PRSCU	5.97
28mm	5	40	39792	PRSCU	14.57
35mm	1	10	39793	PRSCU	25.45
42mm	1	10	39794	PRSCU	49.82
54mm	1	8	39795	PRSCU	66.95
66.7mm	1	0	39346	PRSCU	126.69
76.1mm	1	0	39347	PRSCU	185.60
108mm	1	0	39349	PRSCU	326.13

**SG14/G6090G female elbow, press-fit x parallel female thread**



dimension	pack 1 qty	pack 2 qty	code	price cat	£ each
15mm x 1/2"	10	20	39810	PRSCU	15.29
15mm x 3/4"	10	20	39811	PRSCU	18.79
18mm x 1/2"	1	25	39808	PRSCU	22.40
18mm x 3/4"	1	25	39809	PRSCU	23.38
22mm x 1/2"	5	25	39813	PRSCU	16.65
22mm x 3/4"	1	20	39814	PRSCU	22.40
22mm x 1"	5	15	39812	PRSCU	28.47
28mm x 1"	5	15	39815	PRSCU	37.06
35mm x 1 1/4"	1	10	39816	PRSCU	47.79
42mm x 1 1/2"	1	10	39817	PRSCU	65.08
54mm x 2"	1	8	39818	PRSCU	95.73

**SG13/G6092G male elbow, press-fit x BSP taper male thread**



dimension	pack 1 qty	pack 2 qty	code	price cat	£ each
15mm x 1/2"	10	50	39800	PRSCU	18.05
18mm x 1/2"	1	25	39806	PRSCU	28.25
18mm x 3/4"	1	25	39807	PRSCU	28.77
22mm x 3/4"	1	20	39801	PRSCU	28.25
28mm x 1"	1	15	39802	PRSCU	43.23
35mm x 1 1/4"	1	10	39803	PRSCU	56.25
42mm x 1 1/2"	1	10	39804	PRSCU	73.41
54mm x 2"	1	4	39805	PRSCU	107.25

**SG15/G6471G backplate elbow, press-fit x BSP parallel female thread**



dimension	pack 1 qty	pack 2 qty	code	price cat	£ each
15mm x 1/2"	1	20	39820	PRSCU	20.58
18mm x 1/2"	1	20	39819	PRSCU	39.39
22mm x 3/4"	1	20	39821	PRSCU	50.90

**gas**

**SG21/G7041 obtuse elbow, press-fit x press-fit**



dimension	pack 1 qty	pack 2 qty	code	price cat	£ each
15mm	5	100	39825	PRSCU	4.04
18mm	5	80	39823	PRSCU	5.30
22mm	5	60	39826	PRSCU	5.64
28mm	5	50	39827	PRSCU	16.90
35mm	1	15	39828	PRSCU	24.11
42mm	1	10	39829	PRSCU	40.22
54mm	1	5	39830	PRSCU	57.17
66.7mm	1	0	39351	PRSCU	133.08
76.1mm	1	0	39352	PRSCU	166.20
108mm	1	0	39354	PRSCU	257.09

**SG23/G7085 full crossover, press-fit x press-fit**



dimension	pack 1 qty	pack 2 qty	code	price cat	£ each
15mm	5	50	39844	PRSCU	14.20
22mm	10	20	39846	PRSCU	21.34

**SG24/G7130 equal tee, press-fit on all ends**



dimension	pack 1 qty	pack 2 qty	code	price cat	£ each
15mm	5	60	39850	PRSCU	5.43
18mm	5	75	39847	PRSCU	9.03
22mm	5	40	39851	PRSCU	9.81
28mm	5	25	39852	PRSCU	17.22
35mm	1	10	39853	PRSCU	29.82
42mm	1	10	39854	PRSCU	58.92
54mm	1	4	39855	PRSCU	73.52
66.7mm	1	0	39361	PRSCU	218.68
76.1mm	1	0	39362	PRSCU	311.29
108mm	1	0	39364	PRSCU	420.41

**SG21S/G7040 obtuse street elbow, press-fit x male end for insertion into fitting**



dimension	pack 1 qty	pack 2 qty	code	price cat	£ each
15mm	5	100	39835	PRSCU	3.39
18mm	5	80	39833	PRSCU	4.82
22mm	5	60	39836	PRSCU	5.12
28mm	5	50	39837	PRSCU	17.63
35mm	1	15	39838	PRSCU	25.36
42mm	1	10	39839	PRSCU	40.28
54mm	1	5	39840	PRSCU	59.93
66.7mm	1	0	39356	PRSCU	153.00
76.1mm	1	0	39357	PRSCU	173.02
108mm	1	0	39359	PRSCU	261.78

**gas**

**SG25/G7130 tee, reduced branch, press-fit on all ends**



dimension	pack 1 qty	pack 2 qty	code	price cat	£ each
18 x 18 x 15mm	5	60	39856	PRSCU	7.37
22 x 22 x 15mm	5	40	39860	PRSCU	8.05
22 x 22 x 18mm	5	40	39868	PRSCU	8.05
28 x 28 x 15mm	5	25	39861	PRSCU	32.99
28 x 28 x 22mm	5	25	39862	PRSCU	20.36
35 x 35 x 22mm	1	15	39863	PRSCU	26.55
35 x 35 x 28mm	1	15	39864	PRSCU	29.52
42 x 42 x 22mm	1	15	39869	PRSCU	52.64
42 x 42 x 28mm	1	5	39865	PRSCU	53.39
42 x 42 x 35mm	1	8	39866	PRSCU	53.39
54 x 54 x 22mm	1	8	39871	PRSCU	89.53
54 x 54 x 42mm	1	5	39867	PRSCU	90.28
66.7 x 66.7 x 28mm	1	0	39368	PRSCU	219.69
66.7 x 66.7 x 35mm	1	0	39369	PRSCU	219.61
66.7 x 66.7 x 42mm	1	0	39370	PRSCU	219.61
66.7 x 66.7 x 54mm	1	0	39371	PRSCU	213.68
76.1 x 76.1 x 22mm	1	0	39372	PRSCU	259.20
76.1 x 76.1 x 28mm	1	0	39373	PRSCU	259.20
76.1 x 76.1 x 35mm	1	0	39374	PRSCU	262.46
76.1 x 76.1 x 42mm	1	0	39375	PRSCU	262.46
76.1 x 76.1 x 54mm	1	0	39376	PRSCU	263.40
108 x 108 x 54mm	1	0	39382	PRSCU	337.69
108 x 108 x 66.7mm	1	0	39383	PRSCU	435.35
108 x 108 x 76.1mm	1	0	39384	PRSCU	435.35

**SG27/G7130 tee, one end and branch reduced, press-fit on all ends**



dimension	pack 1 qty	pack 2 qty	code	price cat	£ each
22 x 15 x 15mm	5	40	39875	PRSCU	14.34

**SG30/G6130G female branch tee, press-fit x BSP parallel female branch**



dimension	pack 1 qty	pack 2 qty	code	price cat	£ each
15 x 15mm x 1/2"	5	20	39890	PRSCU	16.62
18 x 18mm x 1/2"	1	20	39891	PRSCU	23.38
22 x 22mm x 1/2"	5	20	39892	PRSCU	24.46
22 x 22mm x 3/4"	5	20	39893	PRSCU	25.04
28 x 28mm x 1/2"	5	15	39894	PRSCU	37.62
28 x 28mm x 3/4"	1	15	39895	PRSCU	40.53
35 x 35mm x 1/2"	1	10	39896	PRSCU	41.32
35 x 35mm x 1"	1	10	38897	PRSCU	43.08
42 x 42mm x 1/2"	1	15	39898	PRSCU	59.51
54 x 54mm x 1/2"	1	5	39899	PRSCU	73.41
76.1 x 76.1mm x 1/2"	1	0	39386	PRSCU	273.92
108 x 108mm x 1/2"	1	0	39388	PRSCU	337.69

**SG26/G7130 tee, one end reduced, press-fit on all ends**



dimension	pack 1 qty	pack 2 qty	code	price cat	£ each
22 x 15 x 22mm	5	50	39870	PRSCU	15.79

**gas**

**SG61/G7301 stop end, for use on copper tube**



dimension	pack 1 qty	pack 2 qty	code	price cat	£ each
15mm	5	150	39880	PRSCU	6.65
18mm	5	130	39878	PRSCU	7.40
22mm	5	90	39881	PRSCU	7.74
28mm	5	75	39882	PRSCU	12.15
35mm	1	25	39883	PRSCU	20.96
42mm	1	20	39884	PRSCU	31.51
54mm	1	15	39885	PRSCU	38.00
66.7mm	1	0	39390	PRSCU	72.51
76.1mm	1	0	39391	PRSCU	79.43
108mm	1	0	39393	PRSCU	135.41

**SG68FF/SG6360 flat faced union adaptor. Press-fit female x union nut**



dimension	pack 1 qty	pack 2 qty	code	price cat	£ each
15mm x 7/8"	5	80	39910	PRSCU	28.49
28mm x 1 3/8"	5	40	39912	PRSCU	42.67

**stainless gas**

**SSG1/7270 straight coupling press-fit x press-fit**



dimension	pack 1 qty	pack 2 qty	code	price cat	£ each
15mm	10	140	11800	PRSSF	9.21
22mm	10	80	11802	PRSSF	11.65
28mm	10	60	11803	PRSSF	13.09
35mm	10	40	11804	PRSSF	16.28
42mm	4	24	11805	PRSSF	22.24
54mm	4	16	11806	PRSSF	26.72
76.1mm	1	0	20481	PRSSF	138.68
88.9mm	1	0	20482	PRSSF	158.47
108mm	1	0	20483	PRSSF	201.44

**SSG1S/7270S straight coupling, slip pattern press-fit x press-fit**



dimension	pack 1 qty	pack 2 qty	code	price cat	£ each
15mm	10	140	11808	PRSSF	15.36
22mm	10	60	11810	PRSSF	18.24
28mm	10	40	11811	PRSSF	21.16
35mm	10	20	11812	PRSSF	23.57
42mm	4	16	11813	PRSSF	27.46
54mm	4	12	11814	PRSSF	35.07

**SSG1FMF composite flange. Press-fit x metric flange. Female press-fit socket with steel flange. Outer flange to BS 4504 type 133, PN16 rated**



dimension	pack 1 qty	pack 2 qty	code	price cat	£ each
76.1mm x DN65 (4 holes)	1	0	20475	PRSSF	393.72
88.9mm x DN80 (8 holes)	1	0	20476	PRSSF	476.84
108mm x DN100 (8 holes)	1	0	20477	PRSSF	555.37

**SSG2/6270G straight female connector press-fit x BSP parallel female thread**



dimension	pack 1 qty	pack 2 qty	code	price cat	£ each
15mm x 1/2"	10	130	11928	PRSSF	18.95
22mm x 1/2"	10	100	11930	PRSSF	21.32
22mm x 3/4"	10	80	11931	PRSSF	25.09
28mm x 1"	10	40	11933	PRSSF	38.99
35mm x 1 1/4"	5	30	11934	PRSSF	42.62
42mm x 1 1/2"	4	24	11936	PRSSF	65.63
54mm x 2"	2	12	11937	PRSSF	98.17

**stainless gas**

**SSG3/6243G straight male connector, press-fit x BSP taper male thread**



dimension	pack 1 qty	pack 2 qty	code	price cat	£ each
15mm x 1/2"	10	200	11914	PRSSF	17.62
22mm x 3/4"	10	100	11917	PRSSF	21.90
28mm x 1"	10	60	11919	PRSSF	27.71
35mm x 1 1/4"	5	20	11920	PRSSF	40.59
42mm x 1 1/2"	4	24	11923	PRSSF	59.21
54mm x 2"	4	12	11924	PRSSF	79.56
76.1mm x 2 1/2"	1	0	20485	PRSSF	466.97
88.9mm x 3"	1	0	20486	PRSSF	539.21

**SSG12/7002A elbow, press-fit x press-fit**



dimension	pack 1 qty	pack 2 qty	code	price cat	£ each
15mm	10	120	11816	PRSSF	13.20
22mm	10	40	11818	PRSSF	18.46
28mm	5	30	11819	PRSSF	23.36
35mm	5	10	11820	PRSSF	36.67
42mm	2	8	11821	PRSSF	61.25
54mm	2	4	11822	PRSSF	84.57
76.1mm	1	0	20501	PRSSF	214.59
88.9mm	1	0	20502	PRSSF	260.85
108mm	1	0	20503	PRSSF	356.67

**SSG6/7243 reducer, larger end male for insertion into fitting x press-fit**



dimension	pack 1 qty	pack 2 qty	code	price cat	£ each
22 x 15mm	10	140	11849	PRSSF	11.01
28 x 15mm	10	70	11851	PRSSF	12.44
28 x 22mm	10	80	11853	PRSSF	12.88
35 x 22mm	10	50	11854	PRSSF	15.73
35 x 28mm	10	60	11855	PRSSF	19.55
42 x 28mm	4	24	11856	PRSSF	23.58
42 x 35mm	4	24	11857	PRSSF	23.58
54 x 28mm	4	16	11858	PRSSF	41.64
54 x 35mm	4	16	11859	PRSSF	41.64
54 x 42mm	4	16	11860	PRSSF	41.64
76.1 x 42mm	1	0	20491	PRSSF	74.69
76.1 x 54mm	1	0	20492	PRSSF	118.92
88.9 x 54mm	1	0	20493	PRSSF	128.34
88.9 x 76.1mm	1	0	20494	PRSSF	171.37
108 x 54mm	1	0	20495	PRSSF	182.11
108 x 76.1mm	1	0	20496	PRSSF	189.26
108 x 88.9mm	1	0	20497	PRSSF	201.44

**SSG12S/7001A street elbow, press-fit x male end for insertion into fitting**



dimension	pack 1 qty	pack 2 qty	code	price cat	£ each
15mm	10	100	11824	PRSSF	12.93
22mm	10	60	11826	PRSSF	17.96
28mm	5	30	11827	PRSSF	22.41
35mm	5	10	11828	PRSSF	36.03
42mm	2	8	11829	PRSSF	58.39
54mm	2	4	11830	PRSSF	83.98
76.1mm	1	0	20505	PRSSF	214.59
88.9mm	1	0	20506	PRSSF	260.85
108mm	1	0	20507	PRSSF	356.67

**stainless gas**

**SSG13/6092G male elbow, press-fit x BSP taper male thread**



dimension	pack 1 qty	pack 2 qty	code	price cat	£ each
22mm x 3/4"	10	60	11942	PRSSF	33.49

**SSG14/6090G female elbow, press-fit x parallel female thread**



dimension	pack 1 qty	pack 2 qty	code	price cat	£ each
15mm x 1/2"	10	100	11950	PRSSF	27.70
22mm x 3/4"	10	40	11952	PRSSF	37.23
28mm x 1"	5	20	11953	PRSSF	48.36

**SSG15/6472G backplate elbow, press-fit x BSP parallel female thread**



dimension	pack 1 qty	pack 2 qty	code	price cat	£ each
15mm x 1/2"	10	80	11957	PRSSF	25.76

**SSG21/7041 obtuse elbow, press-fit x press-fit**



dimension	pack 1 qty	pack 2 qty	code	price cat	£ each
15mm	10	150	11832	PRSSF	17.96
22mm	10	60	11834	PRSSF	22.29
28mm	5	30	11835	PRSSF	25.97
35mm	5	15	11836	PRSSF	30.46
42mm	2	10	11837	PRSSF	49.03
54mm	2	8	11838	PRSSF	63.70
76.1mm	1	0	20511	PRSSF	204.80
88.9mm	1	0	20512	PRSSF	244.35
108mm	1	0	20513	PRSSF	333.57

**SSG21S/7040 obtuse street elbow, press-fit x male end for insertion into fitting**



dimension	pack 1 qty	pack 2 qty	code	price cat	£ each
15mm	10	150	11840	PRSSF	17.62
22mm	10	60	11842	PRSSF	21.57
28mm	5	40	11843	PRSSF	25.27
35mm	5	20	11844	PRSSF	29.02
42mm	4	8	11845	PRSSF	46.39
54mm	2	8	11846	PRSSF	60.33
76.1mm	1	0	20516	PRSSF	188.19
88.9mm	1	0	20517	PRSSF	224.59
108mm	1	0	20518	PRSSF	307.18

**stainless gas**

**SSG24/7130 equal tee, press-fit on all ends**



dimension	pack 1 qty	pack 2 qty	code	price cat	£ each
15mm	10	80	11865	PRSSF	21.65
22mm	10	40	11867	PRSSF	26.58
28mm	10	30	11868	PRSSF	31.11
35mm	5	15	11869	PRSSF	39.37
42mm	4	8	11870	PRSSF	55.88
54mm	2	6	11871	PRSSF	66.84
76.1mm	1	0	20521	PRSSF	386.39
88.9mm	1	0	20522	PRSSF	422.69
108mm	1	0	20523	PRSSF	521.77

**SSG25/7130 tee, reduced branch press-fit on all ends**



dimension	pack 1 qty	pack 2 qty	code	price cat	£ each
22 x 22 x 15mm	10	50	11873	PRSSF	22.71
28 x 28 x 15mm	10	30	11875	PRSSF	27.56
28 x 28 x 22mm	5	30	11877	PRSSF	29.82
35 x 35 x 15mm	5	20	11878	PRSSF	34.05
35 x 35 x 22mm	5	20	11880	PRSSF	35.40
35 x 35 x 28mm	10	20	11881	PRSSF	36.94
42 x 42 x 22mm	4	12	11882	PRSSF	50.74
42 x 42 x 28mm	4	12	11883	PRSSF	52.47
42 x 42 x 35mm	4	12	11884	PRSSF	54.06
54 x 54 x 22mm	2	8	11885	PRSSF	57.42
54 x 54 x 28mm	2	8	11886	PRSSF	59.10
54 x 54 x 35mm	2	8	11887	PRSSF	61.10
54 x 54 x 42mm	2	8	11888	PRSSF	62.81
76.1 x 76.1 x 22mm	1	0	20528	PRSSF	290.68
76.1 x 76.1 x 28mm	1	0	20529	PRSSF	313.73
76.1 x 76.1 x 35mm	1	0	20530	PRSSF	336.82
76.1 x 76.1 x 42mm	1	0	20531	PRSSF	363.29
76.1 x 76.1 x 54mm	1	0	20532	PRSSF	386.39
88.9 x 88.9 x 22mm	1	0	20533	PRSSF	307.18
88.9 x 88.9 x 28mm	1	0	20534	PRSSF	329.52
88.9 x 88.9 x 35mm	1	0	20535	PRSSF	353.29
88.9 x 88.9 x 42mm	1	0	20536	PRSSF	379.79
88.9 x 88.9 x 54mm	1	0	20537	PRSSF	396.24
108 x 108 x 22mm	1	0	20538	PRSSF	326.97
108 x 108 x 28mm	1	0	20539	PRSSF	346.70
108 x 108 x 35mm	1	0	20540	PRSSF	379.79
108 x 108 x 42mm	1	0	20541	PRSSF	396.24
108 x 108 x 54mm	1	0	20542	PRSSF	429.37

**stainless gas**

**SSG30/6130G female branch tee,  
press-fit x BSP parallel female branch**



dimension	pack 1 qty	pack 2 qty	code	price cat	£ each
15 x 15mm x 1/2"	10	80	11900	PRSSF	23.66
22 x 22mm x 1/2"	10	40	11903	PRSSF	25.98
22 x 22mm x 3/4"	10	40	11904	PRSSF	29.08
28 x 28mm x 1/2"	5	30	11905	PRSSF	28.60
35 x 35mm x 1/2"	5	20	11907	PRSSF	34.45
35 x 35mm x 3/4"	10	20	11908	PRSSF	42.72
42 x 42mm x 1/2"	4	12	11909	PRSSF	42.04
54 x 54mm x 1/2"	2	8	11910	PRSSF	49.99
54 x 54mm x 3/4"	2	8	11911	PRSSF	54.83
54 x 54mm x 2"	2	6	11912	PRSSF	108.58
76.1 x 76.1mm x 3/4"	1	0	20551	PRSSF	316.19
76.1 x 76.1mm x 2"	1	0	20552	PRSSF	349.55
88.9 x 88.9mm x 3/4"	1	0	20553	PRSSF	343.57
88.9 x 88.9mm x 2"	1	0	20554	PRSSF	380.05
108 x 108mm x 3/4"	1	0	20555	PRSSF	413.38
108 x 108mm x 2"	1	0	20556	PRSSF	440.86

**SSG61/7301 stop end, press-fit**



dimension	pack 1 qty	pack 2 qty	code	price cat	£ each
15mm	20	340	11980	PRSSF	8.76
22mm	10	140	11982	PRSSF	10.22
28mm	10	80	11983	PRSSF	14.44
35mm	10	40	11984	PRSSF	16.71
42mm	4	32	11985	PRSSF	23.46
54mm	4	24	11986	PRSSF	27.18

**tools and accessories**

**S215 ACO103 15 - 35mm press tool with Bluetooth**



dimension	pack 1 qty	pack 2 qty	code	price cat	£ each
15 - 35mm	1	0	39283	PRSUN	1664.40

**S225 ECO203 15 - 54mm press tool**



dimension	pack 1 qty	pack 2 qty	code	price cat	£ each
15mm - 54mm	1	0	39051	PRSUN	2470.76

**S400 ACO401 76.1 - 168.3mm press tool**



dimension	pack 1 qty	pack 2 qty	code	price cat	£ each
76.1 - 168.3mm	1	0	39267	PRSUN	4788.70

**S335 ACO203XLBT press tool. Including 2 batteries, charger and case (12 - 108mm)**



dimension	pack 1 qty	pack 2 qty	code	price cat	£ each
12 - 108mm	1	0	39177	PRSUN	2755.22

**S226 ACO203BT 15 - 54mm press tool (including battery + charger)**



dimension	pack 1 qty	pack 2 qty	code	price cat	£ each
15 - 54mm	1	0	39070	PRSUN	2609.18

**tools and accessories**

**S350 ACO203BT tools & jaw kit (15 - 35mm)**



dimension	pack 1 qty	pack 2 qty	code	price cat	£ each
15 - 35mm	1	0	39075	PRSUN	3238.84

**S342 ACO202 battery**



dimension	pack 1 qty	pack 2 qty	code	price cat	£ each
18V 1.5Ah	1	0	39292	PRSUN	404.71
18V 3Ah	1	0	39293	PRSUN	649.60

**S340 ACO102 battery**



dimension	pack 1 qty	pack 2 qty	code	price cat	£ each
Lilon 12V 1.5Ah	1	0	39288	PRSUN	278.61
Lilon 12V 3Ah	1	0	39289	PRSUN	400.32

**S343 ACO202/401 charger**



dimension	pack 1 qty	pack 2 qty	code	price cat	£ each
230V	1	0	39291	PRSUN	271.28

**S341 ACO102 charger**



dimension	pack 1 qty	pack 2 qty	code	price cat	£ each
12V (220-240V)	1	0	39290	PRSUN	305.00

**S211 PB1 jaws**



dimension	pack 1 qty	pack 2 qty	code	price cat	£ each
12mm	1	0	39191	PRSUN	134.60
15mm	1	0	39188	PRSUN	162.88
18mm	1	0	39189	PRSUN	162.88
22mm	1	0	39202	PRSUN	162.88
28mm	1	0	39203	PRSUN	162.88
35mm	1	0	39209	PRSUN	234.68
15 - 35mm	1	0	39065	PRSUN	693.22

**tools and accessories**

**S227 ECOTEC jaws**



dimension	pack 1 qty	pack 2 qty	code	price cat	£ each
12mm	1	0	39179	PRSUN	182.48
15mm	1	0	39180	PRSUN	215.10
18mm	1	0	39181	PRSUN	215.10
22mm	1	0	39182	PRSUN	215.10
28mm	1	0	39183	PRSUN	215.10
35mm	1	0	39184	PRSUN	215.10
15 - 35mm	1	0	39068	PRSUN	744.42

**S228 snap on sling 42-54mm**



dimension	pack 1 qty	pack 2 qty	code	price cat	£ each
42mm	1	0	39186	PRSUN	844.52
54mm	1	0	39187	PRSUN	844.52

**S330 snap on sling 66.7 - 88.9mm**



dimension	pack 1 qty	pack 2 qty	code	price cat	£ each
66.7mm	1	0	39220	PRSUN	1215.46
76.1mm	1	0	39221	PRSUN	1094.82
88.9mm	1	0	39224	PRSUN	1268.62

**S330 snap on sling 108mm**



dimension	pack 1 qty	pack 2 qty	code	price cat	£ each
108mm	1	0	39225	PRSUN	1620.82

**S323 sling 139.7mm**



dimension	pack 1 qty	pack 2 qty	code	price cat	£ each
139.7mm	1	0	39038	PRSUN	6508.16

**tools and accessories**

**S324 sling 168.3mm**



dimension	pack 1 qty	pack 2 qty	code	price cat	£ each
168.3mm	1	0	39039	PRSUN	7209.14

**sling (copper only)**



dimension	pack 1 qty	pack 2 qty	code	price cat	£ each
108mm	1	0	39222	PRSUN	1685.52

**S410 HP snap on sling 35-54mm**



dimension	pack 1 qty	pack 2 qty	code	price cat	£ each
35mm	1	0	39268	PRSUN	1256.06

**S410 HP snap on sling.  
Not suitable for copper**



dimension	pack 1 qty	pack 2 qty	code	price cat	£ each
42mm	1	0	39269	PRSUN	1338.92
54mm	1	0	39271	PRSUN	1394.10

**S411 HP401 snap on sling 76.1-108mm**



dimension	pack 1 qty	pack 2 qty	code	price cat	£ each
76.1mm	1	0	39273	PRSUN	1573.54
88.9mm	1	0	39277	PRSUN	1614.96
108mm	1	0	39279	PRSUN	2706.18

**S351 AC0203 jaw and sling set (42-54mm)**



dimension	pack 1 qty	pack 2 qty	code	price cat	£ each
42 - 54mm	1	0	39041	PRSUN	3467.67

**tools and accessories**

**S353 ACO203XL adaptor + sling set**



dimension	pack 1 qty	pack 2 qty	code	price cat	£ each
67mm - 89mm	1	0	39045	PRSUN	5828.07
108mm	1	0	39046	PRSUN	3326.02

**push & press domestic tool kit**



dimension	pack 1 qty	pack 2 qty	code	price cat	£ each
15 - 28mm	1	0	84727	PRSUN	3945.58

**Novopress case for slings**



dimension	pack 1 qty	pack 2 qty	code	price cat	£ each
35mm - 54mm	1	0	39297	PRSUN	426.84
67 - 108mm	1	0	39048	PRSUN	185.68

**S229 ZB203 adaptor 35-54mm**



dimension	pack 1 qty	pack 2 qty	code	price cat	£ each
35 - 54mm	1	0	39190	PRSUN	331.66

**tools and accessories**

**S231 ZB221 adaptor 66.7-108mm**



dimension	pack 1 qty	pack 2 qty	code	price cat	£ each
66.7 - 108mm	1	0	39286	PRSUN	825.12

**S232 ZB222 adaptor (2nd press) 108mm**



dimension	pack 1 qty	pack 2 qty	code	price cat	£ each
108mm	1	0	39287	PRSUN	809.70

**S130 silicone lubricant, for lubricating tube and "O" rings**



dimension	pack 1 qty	pack 2 qty	code	price cat	£ each
100g tub	1	0	39219	PRSUN	9.92

**S135 Dri-slide lubricant for lubricating 42mm to 108mm press-fit jaws only. Must not come into contact with "O" rings**



dimension	pack 1 qty	pack 2 qty	code	price cat	£ each
115 ml	1	12	39169	PRSUN	16.81

**tools and accessories**

**S110 depth gauge, 12mm to 108mm**



dimension	pack 1 qty	pack 2 qty	code	price cat	£ each
N/A	1	20	39173	PRSUN	19.00

**S120 deburring tool, for copper only. 15mm to 54mm**



dimension	pack 1 qty	pack 2 qty	code	price cat	£ each
N/A	1	0	39168	PRSUN	270.01

**SS111 depth gauge, 12mm to 108mm**



dimension	pack 1 qty	pack 2 qty	code	price cat	£ each
12 - 108mm	1	10	39174	PRSUN	21.63

**S122 tube preparation kit, for copper only**



dimension	pack 1 qty	pack 2 qty	code	price cat	£ each
35 - 54mm sizes	1	15	39233	PRSUN	208.62

**S115 tube stripper, for use with SC660 plastic coated carbon steel system tube**



dimension	pack 1 qty	pack 2 qty	code	price cat	£ each
15mm	1	0	39260	PRSUN	96.44
18mm	1	0	39261	PRSUN	96.44
22mm	1	0	39262	PRSUN	113.24
28mm	1	0	39263	PRSUN	113.24
35mm - 54mm	1	0	39264	PRSUN	137.86

**TC155 carbon cutter wheel, for use with Rems Cento**



dimension	pack 1 qty	pack 2 qty	code	price cat	£ each
N/A	1	0	76250	TECCA	See VSH Tectite Price List

**tools and accessories**

SS155 stainless steel cutter wheel, for use with Rems Cento + Rems DueCento

S104 flat face union washer



dimension	pack 1 qty	pack 2 qty	code	price cat	£ each
8 - 168.3mm	1	0	76251	PRSUN	148.67

dimension	pack 1 qty	pack 2 qty	code	price cat	£ each
1/2"	10	0	38989	PRSUN	0.28
3/4"	10	0	38990	PRSUN	0.28
1"	10	0	38991	PRSUN	0.35
1 1/4"	10	0	38992	PRSUN	0.39
1 1/2"	10	0	38993	PRSUN	0.63
2"	10	0	38994	PRSUN	0.80
2 1/2"	10	0	38995	PRSUN	1.94

S100 replacement "O" rings, for VSH XPress copper fittings only. Sizes 15mm to 54mm in bags of 20. Sizes 67mm to 108mm in bags of 5



SS100 replacement EPDM "O" rings, for VSH XPress stainless and carbon fittings



dimension	pack 1 qty	pack 2 qty	code	price cat	£ each
12mm	20	0	39116	PRSUN	0.42
15mm	20	0	39115	PRSUN	0.45
18mm	20	200	39117	PRSUN	0.53
22mm	20	0	39122	PRSUN	0.56
28mm	20	0	39128	PRSUN	0.62
35mm	20	0	39135	PRSUN	0.63
42mm	20	0	39142	PRSUN	0.87
54mm	20	0	39154	PRSUN	0.95
66.7mm	5	0	39230	PRSUN	2.85
76.1mm	5	0	39231	PRSUN	4.05
88.9mm	5	0	39150	PRSUN	4.78
108mm	5	0	39232	PRSUN	6.03

dimension	pack 1 qty	pack 2 qty	code	price cat	£ each
15mm	20	600	27000	PRSUN	0.41
18mm	20	500	27001	PRSUN	0.45
22mm	20	500	27002	PRSUN	0.51
28mm	20	400	27003	PRSUN	0.58
35mm	20	120	27004	PRSUN	0.59
42mm	20	300	27005	PRSUN	0.80
54mm	20	300	27006	PRSUN	0.87
76.1mm	5	100	27007	PRSUN	3.73
88.9mm	5	100	27008	PRSUN	4.69
108mm	5	50	27009	PRSUN	5.54
139.7mm	1	300	11496	PRSUN	13.25
168.3mm	1	300	11497	PRSUN	14.53

**tools and accessories**

SS106 flat face union rubber washer Mk2, for use with VSH XPress stainless and VSH XPress carbon union fittings



dimension	pack 1 qty	pack 2 qty	code	price cat	£ each
15 - 18mm	20	0	27030	PRSUN	0.27
22mm	20	0	27031	PRSUN	0.56
28mm	20	0	27032	PRSUN	0.82
35mm	20	0	27033	PRSUN	1.12
42mm	20	0	27034	PRSUN	1.40
54mm	20	0	27035	PRSUN	2.58

SV101 Viton "O" rings for use on solar installations with VSH XPress carbon and VSH XPress stainless fittings only



dimension	pack 1 qty	pack 2 qty	code	price cat	£ each
76.1mm	5	0	39106	PRSUN	13.95

SV100 Viton "O" rings for use on solar installations with VSH XPress solar and VSH XPress copper fittings only



dimension	pack 1 qty	pack 2 qty	code	price cat	£ each
12mm	20	0	39098	PRSUN	0.42
15mm	20	1000	39100	PRSUN	0.45
18mm	20	1000	39099	PRSUN	0.63
22mm	20	1000	39101	PRSUN	0.66
28mm	20	0	39102	PRSUN	0.82
35mm	20	0	39103	PRSUN	1.18
42mm	20	160	39104	PRSUN	1.96
54mm	20	0	39105	PRSUN	2.05

**tools and accessories**

SV105 Viton "O" rings, for use on solar installations with VSH XPress stainless and VSH XPress carbon fittings



dimension	pack 1 qty	pack 2 qty	code	price cat	£ each
15mm	20	600	39080	PR SUN	1.79
18mm	20	500	39081	PR SUN	2.62
22mm	20	500	39082	PR SUN	2.72
28mm	20	400	39083	PR SUN	3.20
35mm	20	400	39084	PR SUN	3.55
42mm	20	300	39085	PR SUN	4.59
54mm	20	300	39086	PR SUN	4.92
66.7mm	5	0	39087	PR SUN	27.12
76.1mm	5	100	39088	PR SUN	34.32
88.9mm	5	100	39089	PR SUN	42.94
108mm	5	50	39090	PR SUN	56.29
139.7mm	1	300	11498	PR SUN	56.23
168.3mm	1	200	11499	PR SUN	62.83

SSF100 FKM "O" Ring for use on VSH XPress stainless and VSH XPress carbon fittings



dimension	pack 1 qty	pack 2 qty	code	price cat	£ each
15mm	20	400	27100	PR SUN	0.58
18mm	20	400	27101	PR SUN	0.71
22mm	20	400	27102	PR SUN	0.86
28mm	20	400	27103	PR SUN	1.09
35mm	20	120	27104	PR SUN	1.53
42mm	20	300	27105	PR SUN	2.34
54mm	20	300	27106	PR SUN	2.46

**valves**

PS1600 pressure independent control valve (PICV) (x2 press)



dimension	pack 1 qty	pack 2 qty	code	price cat	£ each
½" DN15 (LF)	1	0	16020	DYNAM	See Pegler Proflow Price List
½" DN15 (SF)	1	0	16021	DYNAM	See Pegler Proflow Price List
½" DN15 (HF)	1	0	16022	DYNAM	See Pegler Proflow Price List
¾" DN20 (SF)	1	0	16023	DYNAM	See Pegler Proflow Price List
¾" DN20 (HF)	1	0	16024	DYNAM	See Pegler Proflow Price List
1" DN25 (SF)	1	0	16025	DYNAM	See Pegler Proflow Price List

PSU1600 pressure independent control valve (PICV) (press x press union)



dimension	pack 1 qty	pack 2 qty	code	price cat	£ each
½" DN15 (LF)	1	0	16050	DYNAM	See Pegler Proflow Price List
½" DN15 (SF)	1	0	16051	DYNAM	See Pegler Proflow Price List
½" DN15 (HF)	1	0	16052	DYNAM	See Pegler Proflow Price List
¾" DN20 (SF)	1	0	16053	DYNAM	See Pegler Proflow Price List
¾" DN20 (HF)	1	0	16054	DYNAM	See Pegler Proflow Price List
1" DN25 (SF)	1	0	16055	DYNAM	See Pegler Proflow Price List



**valves**

**PS902S Pegler Proflow Venturi DZR Dynamic valve - excluding actuator. VSH XPress ends for copper/carbon steel/stainless steel tube. Direct flow measuring**



dimension	pack 1 qty	pack 2 qty	code	price cat	£ each
DN15 / 15mm (SL)	1	5	15282	DYNAM	See Pegler Proflow Price List
DN15 / 15mm (SS)	1	5	15283	DYNAM	See Pegler Proflow Price List
DN15 / 15mm (SH)	1	5	15284	DYNAM	See Pegler Proflow Price List
DN15 / 18mm (SL)	1	5	15285	DYNAM	See Pegler Proflow Price List
DN15 / 18mm (SS)	1	5	15286	DYNAM	See Pegler Proflow Price List
DN15 / 18mm (SH)	1	5	15287	DYNAM	See Pegler Proflow Price List
DN20 / 22mm (SS)	1	5	15990	DYNAM	See Pegler Proflow Price List
DN20 / 22mm (SH)	1	5	15991	DYNAM	See Pegler Proflow Price List
DN25 / 28mm (SS)	1	5	15992	DYNAM	See Pegler Proflow Price List
DN25 / 28mm (SH)	1	5	15993	DYNAM	See Pegler Proflow Price List
DN32 / 35mm (SH)	1	2	15994	DYNAM	See Pegler Proflow Price List
DN40 / 42mm (SH)	1	1	15995	DYNAM	See Pegler Proflow Price List
DN50 / 54mm (SH)	1	0	15996	DYNAM	See Pegler Proflow Price List

**PS900S Pegler Proflow Venturi DZR static commissioning valve (FODRV). VSH XPress ends for copper/carbon steel/stainless steel tube**



dimension	pack 1 qty	pack 2 qty	code	price cat	£ each
DN15 / 15mm (UL)	1	5	16381	VTURI	See Pegler Proflow Price List
DN15 / 15mm (SL)	1	5	15550	VTURI	See Pegler Proflow Price List
DN15 / 15mm (SS)	1	5	15551	VTURI	See Pegler Proflow Price List
DN15 / 15mm (SH)	1	5	15552	VTURI	See Pegler Proflow Price List
DN15 / 18mm (UL)	1	5	16382	VTURI	See Pegler Proflow Price List
DN15 / 18mm (SL)	1	5	15553	VTURI	See Pegler Proflow Price List
DN15 / 18mm (SS)	1	5	15554	VTURI	See Pegler Proflow Price List
DN15 / 18mm (SH)	1	5	15555	VTURI	See Pegler Proflow Price List
DN20 / 15mm (SL)	1	5	15556	VTURI	See Pegler Proflow Price List
DN20 / 15mm (SS)	1	5	15557	VTURI	See Pegler Proflow Price List
DN20 / 15mm (SH)	1	5	15558	VTURI	See Pegler Proflow Price List
DN20 / 18mm (SL)	1	5	15559	VTURI	See Pegler Proflow Price List
DN20 / 18mm (SS)	1	5	15560	VTURI	See Pegler Proflow Price List
DN20 / 18mm (SH)	1	5	15561	VTURI	See Pegler Proflow Price List
DN20 / 22mm (SL)	1	5	15562	VTURI	See Pegler Proflow Price List
DN20 / 22mm (SS)	1	5	15563	VTURI	See Pegler Proflow Price List
DN20 / 22mm (SH)	1	5	15564	VTURI	See Pegler Proflow Price List
DN25 / 28mm (SS)	1	5	15565	VTURI	See Pegler Proflow Price List
DN25 / 28mm (SH)	1	5	15566	VTURI	See Pegler Proflow Price List

**valves**

dimension	pack 1 qty	pack 2 qty	code	price cat	£ each
DN32 / 35mm (SH)	1	2	15567	VTURI	See Pegler Proflow Price List
DN40 / 42mm (SH)	1	2	15568	VTURI	See Pegler Proflow Price List
DN50 / 54mm (SH)	1	0	15569	VTURI	See Pegler Proflow Price List

DN50 / 54mm (SH)	1	0	15963	VTURI	See Pegler Proflow Price List
------------------	---	---	-------	-------	-------------------------------

**PSU900S (Inlet) Pegler Proflow Venturi commissioning valve (FODRV), VSH XPress union inlet x VSH XPress end for copper, carbon/stainless steel**



**PSU900S (Outlet) Pegler Proflow Venturi DZR static commissioning valve (FODRV), VSH XPress union outlet x VSH XPress end for copper, carbon/stainless steel**



dimension	pack 1 qty	pack 2 qty	code	price cat	£ each
DN15 / 15mm (UL)	1	5	16387	VTURI	See Pegler Proflow Price List
DN15 / 15mm (SL)	1	5	15950	VTURI	See Pegler Proflow Price List
DN15 / 15mm (SS)	1	5	15951	VTURI	See Pegler Proflow Price List
DN15 / 15mm (SH)	1	5	15952	VTURI	See Pegler Proflow Price List
DN15 / 18mm (SL)	1	5	16388	VTURI	See Pegler Proflow Price List
DN15 / 18mm (SL)	1	5	15953	VTURI	See Pegler Proflow Price List
DN15 / 18mm (SS)	1	5	15954	VTURI	See Pegler Proflow Price List
DN15 / 18mm (SH)	1	5	15955	VTURI	See Pegler Proflow Price List
DN20 / 22mm (SL)	1	5	15956	VTURI	See Pegler Proflow Price List
DN20 / 22mm (SS)	1	5	15957	VTURI	See Pegler Proflow Price List
DN20 / 22mm (SH)	1	5	15958	VTURI	See Pegler Proflow Price List
DN25 / 28mm (SS)	1	0	15959	VTURI	See Pegler Proflow Price List
DN25 / 28mm (SH)	1	5	15960	VTURI	See Pegler Proflow Price List
DN32 / 35mm (SH)	1	2	15961	VTURI	See Pegler Proflow Price List
DN40 / 42mm (SH)	1	2	15962	VTURI	See Pegler Proflow Price List

dimension	pack 1 qty	pack 2 qty	code	price cat	£ each
DN15 / 15mm (UL)	1	5	16361	VTURI	See Pegler Proflow Price List
DN15 / 15mm (SL)	1	5	16362	VTURI	See Pegler Proflow Price List
DN15 / 15mm (SS)	1	5	16363	VTURI	See Pegler Proflow Price List
DN15 / 15mm (SH)	1	5	16364	VTURI	See Pegler Proflow Price List
DN15 / 18mm (UL)	1	5	16365	VTURI	See Pegler Proflow Price List
DN15 / 18mm (SL)	1	5	16366	VTURI	See Pegler Proflow Price List
DN15 / 18mm (SS)	1	5	16367	VTURI	See Pegler Proflow Price List
DN15 / 18mm (SH)	1	5	16368	VTURI	See Pegler Proflow Price List
DN20 / 22mm (SL)	1	5	16369	VTURI	See Pegler Proflow Price List
DN20 / 22mm (SS)	1	5	16370	VTURI	See Pegler Proflow Price List
DN20 / 22mm (SH)	1	5	16371	VTURI	See Pegler Proflow Price List
DN25 / 28mm (SS)	1	5	16372	VTURI	See Pegler Proflow Price List
DN25 / 28mm (SH)	1	5	16373	VTURI	See Pegler Proflow Price List
DN32 / 35mm (SH)	1	2	16374	VTURI	See Pegler Proflow Price List
DN40 / 42mm (SH)	1	2	16375	VTURI	See Pegler Proflow Price List
DN50 / 54mm (SH)	1	0	16376	VTURI	See Pegler Proflow Price List

**valves**

**PS901S Pegler Proflow Venturi DZR double regulating valve (DRV). VSH XPress ends for copper/carbon steel/stainless steel tube**



dimension	pack 1 qty	pack 2 qty	code	price cat	£ each
DN15 / 15mm (SL)	1	5	15570	VTURI	See Pegler Proflow Price List
DN15 / 15mm (SS)	1	5	15571	VTURI	See Pegler Proflow Price List
DN15 / 18mm (SL)	1	5	15572	VTURI	See Pegler Proflow Price List
DN15 / 18mm (SS)	1	5	15573	VTURI	See Pegler Proflow Price List
DN20 / 15mm (SL)	1	5	15574	VTURI	See Pegler Proflow Price List
DN20 / 15mm (SS)	1	5	15575	VTURI	See Pegler Proflow Price List
DN20 / 18mm (SL)	1	5	15576	VTURI	See Pegler Proflow Price List
DN20 / 18mm (SS)	1	5	15577	VTURI	See Pegler Proflow Price List
DN20 / 22mm (SL)	1	5	15578	VTURI	See Pegler Proflow Price List
DN20 / 22mm (SS)	1	5	15579	VTURI	See Pegler Proflow Price List
DN25 / 28mm (SS)	1	5	15580	VTURI	See Pegler Proflow Price List
DN32 / 35mm (SS)	1	2	15581	VTURI	See Pegler Proflow Price List
DN40 / 42mm (SS)	1	2	15582	VTURI	See Pegler Proflow Price List
DN50 / 54mm (SS)	1	0	15583	VTURI	See Pegler Proflow Price List

**PSU901S Pegler Proflow Venturi DZR double regulating valve (DRV), VSH XPress union x VSH XPress end for copper, carbon/stainless steel**



dimension	pack 1 qty	pack 2 qty	code	price cat	£ each
DN15 / 15mm (SL)	1	5	15970	VTURI	See Pegler Proflow Price List
DN15 / 15mm (SS)	1	5	15971	VTURI	See Pegler Proflow Price List
DN15 / 18mm (SL)	1	5	15972	VTURI	See Pegler Proflow Price List
DN15 / 18mm (SS)	1	5	15973	VTURI	See Pegler Proflow Price List
DN20 / 22mm (SL)	1	5	15974	VTURI	See Pegler Proflow Price List
DN20 / 22mm (SS)	1	5	15975	VTURI	See Pegler Proflow Price List
DN25 / 28mm (SS)	1	5	15976	VTURI	See Pegler Proflow Price List
DN32 / 35mm (SS)	1	2	15977	VTURI	See Pegler Proflow Price List
DN40 / 42mm (SS)	1	2	15978	VTURI	See Pegler Proflow Price List
DN50 / 54mm (SS)	1	0	15979	VTURI	See Pegler Proflow Price List

**902 230V actuator on/off**



dimension	pack 1 qty	pack 2 qty	code	price cat	£ each
DN15-32	1	5	15280	DYNAM	See Pegler Proflow Price List

**valves**

**902 24V (0-10V DC control voltage) actuator modulating**



dimension	pack 1 qty	pack 2 qty	code	price cat	£ each
DN15-32	1	5	15281	DYNAM	See Pegler Proflow Price List

**920EX Venturi test point extension kit. Male taper thread**



dimension	pack 1 qty	pack 2 qty	code	price cat	£ each
1/4" x 50mm	5	0	15205	VTURI	See Pegler Proflow Price List

**902 24V actuator on/off**



dimension	pack 1 qty	pack 2 qty	code	price cat	£ each
DN15-32	1	100	15202	DYNAM	See Pegler Proflow Price List
DN15-32	1	0	15203	VTURI	See Pegler Proflow Price List

**insulation jackets for Pegler Proflow Venturi valve**



dimension	pack 1 qty	pack 2 qty	code	price cat	£ each
DN15	1	0	15250	VTURI	See Pegler Proflow Price List
DN20	1	0	15251	VTURI	See Pegler Proflow Price List
DN25	1	0	15252	VTURI	See Pegler Proflow Price List
DN32	1	0	15253	VTURI	See Pegler Proflow Price List
DN40	1	0	15254	VTURI	See Pegler Proflow Price List
DN50	1	0	15255	VTURI	See Pegler Proflow Price List

**910TP red and blue Venturi test points. Male taper thread**



dimension	pack 1 qty	pack 2 qty	code	price cat	£ each
1/4"	1	0	15201	VTURI	See Pegler Proflow Price List

**valves**

Pegler 710TP DZR red and blue self seal test points. Male taper connection



dimension	pack 1 qty	pack 2 qty	code	price cat	£ each
1/4" x 36mm	1	6	126041	PGCOM	See Pegler Proflow Price List
1/4" x 75mm	1	5	126042	PGCOM	See Pegler Proflow Price List

PS1200SF double regulating valve (DRV). DZR brass body, VSH XPress ends for copper/carbon steel/stainless steel tube



dimension	pack 1 qty	pack 2 qty	code	price cat	£ each
DN15 / 15mm	1	0	126009	PGCOM	See Pegler Proflow Price List
DN15 / 18mm	1	0	126131	PGCOM	See Pegler Proflow Price List
DN20 / 22mm	1	0	126010	PGCOM	See Pegler Proflow Price List
DN25 / 28mm	1	0	126011	PGCOM	See Pegler Proflow Price List
DN32 / 35mm	1	0	126012	PGCOM	See Pegler Proflow Price List
DN40 / 42mm	1	0	126013	PGCOM	See Pegler Proflow Price List
DN50 / 54mm	1	0	126014	PGCOM	See Pegler Proflow Price List

PSU1200 double regulating valve (DRV), DZR brass body. VSH XPress union x VSH XPress end for copper, carbon/stainless steel



dimension	pack 1 qty	pack 2 qty	code	price cat	£ each
15mm	1	0	126240	PGCOM	See Pegler Proflow Price List
18mm	1	0	126241	PGCOM	See Pegler Proflow Price List
22mm	1	0	126242	PGCOM	See Pegler Proflow Price List
28mm	1	0	126243	PGCOM	See Pegler Proflow Price List
35mm	1	0	126244	PGCOM	See Pegler Proflow Price List
42mm	1	0	126245	PGCOM	See Pegler Proflow Price List
54mm	1	0	126246	PGCOM	See Pegler Proflow Price List

XT1200 double regulating valve (DRV). DZR brass body, VSH XPress end x VSH Tectite push end for copper/carbon steel/stainless steel tube



dimension	pack 1 qty	pack 2 qty	code	price cat	£ each
15mm (SF)	1	0	126209	PGCOM	See Pegler Proflow Price List
35mm (SF)	1	0	126213	PGCOM	See Pegler Proflow Price List
54mm (SF)	1	0	126215	PGCOM	See Pegler Proflow Price List

**valves**

PS1260 commissioning valve (FODRV). DZR brass body with test points, VSH XPress ends for copper/carbon steel/stainless steel tube



dimension	pack 1 qty	pack 2 qty	code	price cat	£ each
DN15 / 15mm (LF)	1	0	126029	PGCOM	See Pegler Proflow Price List
DN15 / 15mm (ULF)	1	0	126087	PGCOM	See Pegler Proflow Price List
DN15 / 15mm (MF)	1	0	126088	PGCOM	See Pegler Proflow Price List
DN15 / 15mm (SF)	1	0	126030	PGCOM	See Pegler Proflow Price List
DN15 / 18mm (LF)	1	0	126134	PGCOM	See Pegler Proflow Price List
DN15 / 18mm (SF)	1	0	126135	PGCOM	See Pegler Proflow Price List
DN20 / 22mm (SF)	1	0	126031	PGCOM	See Pegler Proflow Price List
DN25 / 28mm (SF)	1	0	126032	PGCOM	See Pegler Proflow Price List
DN32 / 35mm (SF)	1	0	126033	PGCOM	See Pegler Proflow Price List
DN40 / 42mm (SF)	1	0	126034	PGCOM	See Pegler Proflow Price List
DN50 / 54mm (SF)	1	0	126035	PGCOM	See Pegler Proflow Price List

PSU1260 (outlet) commissioning valve (FODRV). DZR brass body with test points. VSH XPress union outlet x VSH XPress end for copper, carbon/stainless steel



dimension	pack 1 qty	pack 2 qty	code	price cat	£ each
15mm (ULF)	1	0	126292	PGCOM	See Pegler Proflow Price List
15mm (ULF)	1	0	126230	PGCOM	See Pegler Proflow Price List
15mm (MF)	1	0	126290	PGCOM	See Pegler Proflow Price List
15mm (SF)	1	0	126231	PGCOM	See Pegler Proflow Price List
18mm (ULF)	1	0	126296	PGCOM	See Pegler Proflow Price List
18mm (MF)	1	0	126294	PGCOM	See Pegler Proflow Price List
18mm (LF)	1	0	126232	PGCOM	See Pegler Proflow Price List
18mm (SF)	1	0	126233	PGCOM	See Pegler Proflow Price List
22mm (SF)	1	0	126234	PGCOM	See Pegler Proflow Price List
28mm (SF)	1	0	126235	PGCOM	See Pegler Proflow Price List
35mm (SF)	1	0	126236	PGCOM	See Pegler Proflow Price List
42mm (SF)	1	0	126237	PGCOM	See Pegler Proflow Price List
54mm (SF)	1	0	126238	PGCOM	See Pegler Proflow Price List

**valves**

PSU1260 (inlet) commissioning valve (FODRV). DZR brass body with test points. VSH XPress union inlet x VSH XPress end for copper, carbon/stainless steel



dimension	pack 1 qty	pack 2 qty	code	price cat	£ each
15mm (ULF)	1	0	126293	PGCOM	See Pegler Proflow Price List
15mm (LF)	1	0	126247	PGCOM	See Pegler Proflow Price List
15mm (MF)	1	0	126291	PGCOM	See Pegler Proflow Price List
15mm (SF)	1	0	126248	PGCOM	See Pegler Proflow Price List
18mm (LF)	1	0	126297	PGCOM	See Pegler Proflow Price List
18mm (MF)	1	0	126295	PGCOM	See Pegler Proflow Price List
18mm (LF)	1	0	126249	PGCOM	See Pegler Proflow Price List
18mm (SF)	1	0	126250	PGCOM	See Pegler Proflow Price List
22mm (SF)	1	0	126251	PGCOM	See Pegler Proflow Price List
28mm (SF)	1	0	126252	PGCOM	See Pegler Proflow Price List
35mm (SF)	1	0	126253	PGCOM	See Pegler Proflow Price List
42mm (SF)	1	0	126254	PGCOM	See Pegler Proflow Price List
54mm (SF)	1	0	126255	PGCOM	See Pegler Proflow Price List

XT1260 commissioning valve (FODRV). DZR brass body with test points, VSH XPress press end x VSH Tectite push end for copper/carbon steel/stainless steel tube



dimension	pack 1 qty	pack 2 qty	code	price cat	£ each
15mm (LF)	1	0	126200	PGCOM	See Pegler Proflow Price List
22mm (SF)	1	0	126204	PGCOM	See Pegler Proflow Price List
28mm (SF)	1	0	126205	PGCOM	See Pegler Proflow Price List
35mm (SF)	1	0	126206	PGCOM	See Pegler Proflow Price List
54mm (SF)	1	0	126208	PGCOM	See Pegler Proflow Price List

**valves**

PS1250 DZR metering station. DZR brass body with test points, VSH XPress ends for copper/carbon steel/stainless steel tube



dimension	pack 1 qty	pack 2 qty	code	price cat	£ each
DN15 / 15mm	1	0	126070	PGCOM	See Pegler Proflow Price List
DN15 / 15mm	1	0	126071	PGCOM	See Pegler Proflow Price List
DN15 / 18mm	1	0	126133	PGCOM	See Pegler Proflow Price List
DN20 / 22mm	1	0	126072	PGCOM	See Pegler Proflow Price List
DN25 / 28mm	1	0	126073	PGCOM	See Pegler Proflow Price List
DN32 / 35mm	1	0	126074	PGCOM	See Pegler Proflow Price List
DN40 / 42mm	1	0	126075	PGCOM	See Pegler Proflow Price List
DN50 / 54mm	1	0	126076	PGCOM	See Pegler Proflow Price List

XT1250 DZR metering station. DZR brass body with test points, VSH XPress press end x VSH Tectite push end for copper/carbon steel/stainless steel tube



dimension	pack 1 qty	pack 2 qty	code	price cat	£ each
28mm (SF)	1	0	126221	PGCOM	See Pegler Proflow Price List

PS1070/125 bronze full way gate valve. VSH XPress ends for copper/carbon steel/stainless steel tube



dimension	pack 1 qty	pack 2 qty	code	price cat	£ each
15mm	1	10	103301	GENVL	See Pegler Valve Price List
22mm	1	10	103303	GENVL	See Pegler Valve Price List
28mm	1	5	103304	GENVL	See Pegler Valve Price List
35mm	1	2	103305	GENVL	See Pegler Valve Price List
42mm	1	2	103306	GENVL	See Pegler Valve Price List
54mm	1	2	103307	GENVL	See Pegler Valve Price List

PSU1070/125 bronze full way gate valve, VSH XPress union x VSH XPress end for copper, carbon/stainless steel



dimension	pack 1 qty	pack 2 qty	code	price cat	£ each
15mm	1	10	103320	GENVL	See Pegler Valve Price List
22mm	1	5	103322	GENVL	See Pegler Valve Price List
28mm	1	4	103323	GENVL	See Pegler Valve Price List
35mm	1	2	103324	GENVL	See Pegler Valve Price List
42mm	1	0	103325	GENVL	See Pegler Valve Price List
54mm	1	0	103326	GENVL	See Pegler Valve Price List

**valves**

PS1070/125LS bronze full way gate valve with lockshield. VSH XPress ends for copper/carbon steel/stainless steel tube



dimension	pack 1 qty	pack 2 qty	code	price cat	£ each
15mm	1	10	103311	GENVL	See Pegler Valve Price List
22mm	1	10	103313	GENVL	See Pegler Valve Price List
28mm	1	5	103314	GENVL	See Pegler Valve Price List
35mm	1	5	103315	GENVL	See Pegler Valve Price List
42mm	1	2	103316	GENVL	See Pegler Valve Price List
54mm	1	2	103317	GENVL	See Pegler Valve Price List

PS1078 DZR full way gate valve. VSH XPress ends for copper/carbon steel/stainless steel tube



dimension	pack 1 qty	pack 2 qty	code	price cat	£ each
15mm	1	10	204056	GENVL	See Pegler Valve Price List
18mm	1	10	204057	GENVL	See Pegler Valve Price List
22mm	1	10	204058	GENVL	See Pegler Valve Price List
28mm	1	5	204059	GENVL	See Pegler Valve Price List
35mm	1	5	204060	GENVL	See Pegler Valve Price List
42mm	1	2	204061	GENVL	See Pegler Valve Price List
54mm	1	2	204062	GENVL	See Pegler Valve Price List

PSU1070/125LS bronze full way gate valve, lockshield. VSH XPress union x VSH XPress end for copper, carbon/stainless steel



dimension	pack 1 qty	pack 2 qty	code	price cat	£ each
15mm	1	10	103330	GENVL	See Pegler Valve Price List
22mm	1	5	103332	GENVL	See Pegler Valve Price List
28mm	1	4	103333	GENVL	See Pegler Valve Price List
35mm	1	2	103334	GENVL	See Pegler Valve Price List
42mm	1	0	103335	GENVL	See Pegler Valve Price List
54mm	1	0	103336	GENVL	See Pegler Valve Price List

PS1078LS DZR full way gate valve with lockshield. VSH XPress ends for copper/carbon steel/stainless steel tube



dimension	pack 1 qty	pack 2 qty	code	price cat	£ each
15mm	1	10	204063	GENVL	See Pegler Valve Price List
18mm	1	10	204064	GENVL	See Pegler Valve Price List
22mm	1	10	204065	GENVL	See Pegler Valve Price List
28mm	1	5	204066	GENVL	See Pegler Valve Price List
35mm	1	5	204067	GENVL	See Pegler Valve Price List
42mm	1	2	204068	GENVL	See Pegler Valve Price List

**valves**

PSU1078LS DZR brass full way gate valve, lockshield. VSH XPress union x VSH XPress end for copper, carbon/stainless steel



dimension	pack 1 qty	pack 2 qty	code	price cat	£ each
15mm	1	10	204090	GENVL	See Pegler Valve Price List
22mm	1	5	204092	GENVL	See Pegler Valve Price List
28mm	1	4	204093	GENVL	See Pegler Valve Price List
35mm	1	2	204094	GENVL	See Pegler Valve Price List
42mm	1	0	204095	GENVL	See Pegler Valve Price List
54mm	1	0	204096	GENVL	See Pegler Valve Price List

PSU1068 brass full way gate valve, VSH XPress union x VSH XPress end for copper, carbon/stainless steel



dimension	pack 1 qty	pack 2 qty	code	price cat	£ each
15mm	1	10	203340	GENVL	See Pegler Valve Price List
22mm	1	5	203342	GENVL	See Pegler Valve Price List
28mm	1	4	203343	GENVL	See Pegler Valve Price List
35mm	1	2	203344	GENVL	See Pegler Valve Price List
42mm	1	0	203345	GENVL	See Pegler Valve Price List
54mm	1	0	203346	GENVL	See Pegler Valve Price List

PS1068 brass full way gate valve. VSH XPress ends for copper/carbon steel/stainless steel tube



dimension	pack 1 qty	pack 2 qty	code	price cat	£ each
15mm	1	10	203301	GENVL	See Pegler Valve Price List
22mm	1	10	203303	GENVL	See Pegler Valve Price List
28mm	1	5	203304	GENVL	See Pegler Valve Price List
35mm	1	5	203305	GENVL	See Pegler Valve Price List
42mm	1	2	203306	GENVL	See Pegler Valve Price List
54mm	1	2	203307	GENVL	See Pegler Valve Price List

PS1068LS brass full way gate valve with lockshield. VSH XPress ends for copper/carbon steel/stainless steel tube



dimension	pack 1 qty	pack 2 qty	code	price cat	£ each
15mm	1	10	203311	GENVL	See Pegler Valve Price List
22mm	1	10	203313	GENVL	See Pegler Valve Price List
28mm	1	5	203314	GENVL	See Pegler Valve Price List
35mm	1	5	203315	GENVL	See Pegler Valve Price List
42mm	1	2	203316	GENVL	See Pegler Valve Price List
54mm	1	2	203317	GENVL	See Pegler Valve Price List

**valves**

**PSU1068LS** brass full way gate valve, lockshield. VSH XPress union x VSH XPress end for copper, carbon/stainless steel



dimension	pack 1 qty	pack 2 qty	code	price cat	£ each
15mm	1	10	203350	GENVL	See Pegler Valve Price List
22mm	1	5	203352	GENVL	See Pegler Valve Price List
28mm	1	4	203353	GENVL	See Pegler Valve Price List
35mm	1	2	203354	GENVL	See Pegler Valve Price List
42mm	1	0	203355	GENVL	See Pegler Valve Price List
54mm	1	0	203356	GENVL	See Pegler Valve Price List

**PS500** brass chrome plated ball valve with lever, full bore. VSH XPress ends for copper/carbon steel/stainless steel tube



dimension	pack 1 qty	pack 2 qty	code	price cat	£ each
15mm	1	10	242301	GENVL	See Pegler Valve Price List
18mm	1	10	242302	GENVL	See Pegler Valve Price List
22mm	1	10	242303	GENVL	See Pegler Valve Price List
28mm	1	5	242304	GENVL	See Pegler Valve Price List
35mm	1	5	242305	GENVL	See Pegler Valve Price List
42mm	1	2	242306	GENVL	See Pegler Valve Price List
54mm	1	0	242307	GENVL	See Pegler Valve Price List

**PS500T** brass chrome plated ball valve with tee, full bore. VSH XPress ends for copper/carbon steel/stainless steel tube



dimension	pack 1 qty	pack 2 qty	code	price cat	£ each
15mm	1	10	243301	GENVL	See Pegler Valve Price List
18mm	1	10	243302	GENVL	See Pegler Valve Price List
22mm	1	10	243303	GENVL	See Pegler Valve Price List
28mm	1	5	243304	GENVL	See Pegler Valve Price List

**PSU500** brass chrome plated ball valve with lever, full bore. VSH XPress union x VSH XPress end for copper, carbon/stainless steel



dimension	pack 1 qty	pack 2 qty	code	price cat	£ each
15mm	1	10	243330	GENVL	See Pegler Valve Price List
18mm	1	10	243331	GENVL	See Pegler Valve Price List
22mm	1	5	243332	GENVL	See Pegler Valve Price List
28mm	1	5	243333	GENVL	See Pegler Valve Price List
35mm	1	4	243334	GENVL	See Pegler Valve Price List
42mm	1	0	243335	GENVL	See Pegler Valve Price List
54mm	1	0	243336	GENVL	See Pegler Valve Price List

**valves**

PSU500EL brass chrome plated ball valve with extended stem, full bore. VSH XPress union x VSH XPress end for copper, carbon/stainless steel



dimension	pack 1 qty	pack 2 qty	code	price cat	£ each
15mm	1	10	243340	GENVL	See Pegler Valve Price List
22mm	1	5	243342	GENVL	See Pegler Valve Price List
28mm	1	5	243343	GENVL	See Pegler Valve Price List
35mm	1	0	243344	GENVL	See Pegler Valve Price List
42mm	1	0	243345	GENVL	See Pegler Valve Price List
54mm	1	0	243346	GENVL	See Pegler Valve Price List

PS550 DZR ball valve with lever, full bore. VSH XPress ends for copper/carbon steel/stainless steel tube



dimension	pack 1 qty	pack 2 qty	code	price cat	£ each
15mm	1	10	245220	GENVL	See Pegler Valve Price List
18mm	1	10	245221	GENVL	See Pegler Valve Price List
22mm	1	10	245222	GENVL	See Pegler Valve Price List
28mm	1	5	245223	GENVL	See Pegler Valve Price List
35mm	1	5	245224	GENVL	See Pegler Valve Price List
42mm	1	2	245225	GENVL	See Pegler Valve Price List
54mm	1	2	245226	GENVL	See Pegler Valve Price List

XT500 brass chrome plated ball valve with lever, full bore. VSH XPress press end x VSH Tectite push end for copper/carbon steel/stainless steel tube



dimension	pack 1 qty	pack 2 qty	code	price cat	£ each
15mm	1	10	243320	GENVL	See Pegler Valve Price List
22mm	1	10	243322	GENVL	See Pegler Valve Price List
28mm	1	5	243323	GENVL	See Pegler Valve Price List
35mm	1	5	243324	GENVL	See Pegler Valve Price List
42mm	1	2	243325	GENVL	See Pegler Valve Price List
54mm	1	0	243326	GENVL	See Pegler Valve Price List

PS550T DZR ball valve with tee, full bore. VSH XPress ends for copper/carbon steel/stainless steel tube



dimension	pack 1 qty	pack 2 qty	code	price cat	£ each
15mm	1	10	245230	GENVL	See Pegler Valve Price List
22mm	1	10	245232	GENVL	See Pegler Valve Price List
28mm	1	5	245233	GENVL	See Pegler Valve Price List

**valves**

PS550EL full bore DZR lever ball valve. Extended stem. Blue lever handle, press ends, PN25



dimension	pack 1 qty	pack 2 qty	code	price cat	£ each
15mm	1	10	245300	GENVL	See Pegler Valve Price List
18mm	1	10	245301	GENVL	See Pegler Valve Price List
22mm	1	5	245302	GENVL	See Pegler Valve Price List
28mm	1	5	245303	GENVL	See Pegler Valve Price List
35mm	1	2	245304	GENVL	See Pegler Valve Price List
42mm	1	2	245305	GENVL	See Pegler Valve Price List
54mm	1	2	245306	GENVL	See Pegler Valve Price List

PSU550EL DZR brass ball valve with extended stem, full bore. VSH XPress union x VSH XPress end for copper, carbon/stainless steel



dimension	pack 1 qty	pack 2 qty	code	price cat	£ each
15mm	1	10	245320	GENVL	See Pegler Valve Price List
18mm	1	10	245321	GENVL	See Pegler Valve Price List
22mm	1	5	245322	GENVL	See Pegler Valve Price List
28mm	1	8	245323	GENVL	See Pegler Valve Price List
35mm	1	0	245324	GENVL	See Pegler Valve Price List
42mm	1	0	245325	GENVL	See Pegler Valve Price List
54mm	1	0	245326	GENVL	See Pegler Valve Price List

PSU550 DZR brass ball valve with lever, full bore. VSH XPress union x VSH XPress end for copper, carbon/stainless steel



dimension	pack 1 qty	pack 2 qty	code	price cat	£ each
15mm	1	10	245310	GENVL	See Pegler Valve Price List
18mm	1	10	245311	GENVL	See Pegler Valve Price List
22mm	1	5	245312	GENVL	See Pegler Valve Price List
28mm	1	5	245313	GENVL	See Pegler Valve Price List
35mm	1	4	245314	GENVL	See Pegler Valve Price List
42mm	1	0	245315	GENVL	See Pegler Valve Price List
54mm	1	0	245316	GENVL	See Pegler Valve Price List

**valves**

**PBSEK stem extension kit (suitable for PB700 and PB500 ranges)**



dimension	pack 1 qty	pack 2 qty	code	price cat	£ each
7	1	10	227027	GENVL	See Pegler Valve Price List
8	1	10	227028	GENVL	See Pegler Valve Price List
9	1	5	227029	GENVL	See Pegler Valve Price List
10	1	5	227030	GENVL	See Pegler Valve Price List

**LD locking device (for standard lever handle products suitable for PB700 and PB500 ranges)**



dimension	pack 1 qty	pack 2 qty	code	price cat	£ each
1/4", 3/8", 1/2"	10	0	258001	GENVL	See Pegler Valve Price List
3/4", 1", 1 1/4"	10	0	258002	GENVL	See Pegler Valve Price List
1 1/2", 2"	10	0	258003	GENVL	See Pegler Valve Price List

**PDK padlock and key (suitable for PB700, PB500 and PB300 ranges)**



dimension	pack 1 qty	pack 2 qty	code	price cat	£ each
3	1	25	258011	GENVL	See Pegler Valve Price List
4	1	10	258012	GENVL	See Pegler Valve Price List

**PS1060A press-fit swing check valve. VSH XPress ends for copper/carbon steel/stainless steel tube**



dimension	pack 1 qty	pack 2 qty	code	price cat	£ each
15mm	1	10	122301	GENVL	See Pegler Valve Price List
18mm	1	10	122302	GENVL	See Pegler Valve Price List
22mm	1	10	122303	GENVL	See Pegler Valve Price List
28mm	1	5	122304	GENVL	See Pegler Valve Price List
35mm	1	2	122305	GENVL	See Pegler Valve Price List
42mm	1	2	122306	GENVL	See Pegler Valve Price List
54mm	1	0	122307	GENVL	See Pegler Valve Price List

**valves**

PSU 1060A swing check valve bronze swing type check valve. VSH XPress union end x VSH XPress end for copper/carbon steel/stainless steel tube



dimension	pack 1 qty	pack 2 qty	code	price cat	£ each
15mm	1	10	122310	GENVL	See Pegler Valve Price List
22mm	1	5	122312	GENVL	See Pegler Valve Price List
28mm	1	5	122313	GENVL	See Pegler Valve Price List
35mm	1	2	122314	GENVL	See Pegler Valve Price List
42mm	1	0	122315	GENVL	See Pegler Valve Price List
54mm	1	0	122316	GENVL	See Pegler Valve Price List

PSU4426 DZR double check valve. VSH XPress end for copper/carbon steel/stainless steel tube x VSH XPress union outlet



dimension	pack 1 qty	pack 2 qty	code	price cat	£ each
15mm	1	10	42082	GENVL	See Pegler Valve Price List
18mm	1	10	42083	GENVL	See Pegler Valve Price List
22mm	1	5	42084	GENVL	See Pegler Valve Price List
28mm	1	5	42085	GENVL	See Pegler Valve Price List
35mm	1	5	42086	GENVL	See Pegler Valve Price List
42mm	1	5	42087	GENVL	See Pegler Valve Price List
54mm	1	2	42088	GENVL	See Pegler Valve Price List

PS4426 press-fit double check valve. VSH XPress ends for copper/carbon steel/stainless steel tube



dimension	pack 1 qty	pack 2 qty	code	price cat	£ each
15mm	1	5	42050	GENVL	See Pegler Valve Price List
22mm	1	5	42051	GENVL	See Pegler Valve Price List
28mm	1	5	42052	GENVL	See Pegler Valve Price List
35mm	1	0	42053	GENVL	See Pegler Valve Price List
42mm	1	2	42054	GENVL	See Pegler Valve Price List
54mm	1	0	42055	GENVL	See Pegler Valve Price List

PS913 bronze Y pattern strainer. VSH XPress ends for copper/carbon steel/stainless steel tube



dimension	pack 1 qty	pack 2 qty	code	price cat	£ each
15mm	1	10	15472	GENVL	See Pegler Valve Price List
18mm	1	10	15473	GENVL	See Pegler Valve Price List
22mm	1	10	15474	GENVL	See Pegler Valve Price List
28mm	1	5	15475	GENVL	See Pegler Valve Price List
35mm	1	5	15476	GENVL	See Pegler Valve Price List
42mm	1	2	15477	GENVL	See Pegler Valve Price List
54mm	1	2	15478	GENVL	See Pegler Valve Price List

**valves**

PSU913 bronze Y pattern strainer. VSH XPress inlet end x VSH XPress union outlet end for copper/carbon steel/stainless steel tube



dimension	pack 1 qty	pack 2 qty	code	price cat	£ each
15mm	1	10	15437	GENVL	See Pegler Valve Price List
22mm	1	5	15439	GENVL	See Pegler Valve Price List
28mm	1	2	15440	GENVL	See Pegler Valve Price List
35mm	1	0	15441	GENVL	See Pegler Valve Price List
42mm	1	0	15442	GENVL	See Pegler Valve Price List
54mm	1	0	15443	GENVL	See Pegler Valve Price List

PS605 bronze circulation valve



dimension	pack 1 qty	pack 2 qty	code	price cat	£ each
15mm	1	0	16530	GENVL	See Pegler Proflow Price List
18mm	1	0	16529	GENVL	See Pegler Proflow Price List
22mm	1	0	16531	GENVL	See Pegler Proflow Price List

PSU605 circulation valve. 50°-60°C. VSH XPress union outlet x VSH XPress end for copper/carbon steel/stainless steel tube



dimension	pack 1 qty	pack 2 qty	code	price cat	£ each
15mm	1	0	16533	GENVL	See Pegler Proflow Price List
18mm	1	0	16534	GENVL	See Pegler Proflow Price List
22mm	1	0	16535	GENVL	See Pegler Proflow Price List
28mm	1	0	16536	GENVL	See Pegler Proflow Price List

PS4PRV pressure reducing valve. VSH XPress ends for copper/carbon steel/stainless steel tube. Adjustable 0.5 to 6.0 bar. Nickel plated



dimension	pack 1 qty	pack 2 qty	code	price cat	£ each
15mm	1	0	5A2070	GENVL	See Pegler Valve Price List
22mm	1	0	5A2072	GENVL	See Pegler Valve Price List
28mm	1	0	5A2073	GENVL	See Pegler Valve Price List
35mm	1	0	5A2074	GENVL	See Pegler Valve Price List
42mm	1	0	5A2075	GENVL	See Pegler Valve Price List
54mm	1	0	5A2076	GENVL	See Pegler Valve Price List

**valves**

**PSU4PRV** pressure reducing valve. VSH XPress union outlet x VSH XPress end for copper/carbon steel/stainless steel tube. Nickel plated



dimension	pack 1 qty	pack 2 qty	code	price cat	£ each
15mm	1	0	5A2060	GENVL	See Pegler Valve Price List
22mm	1	0	5A2062	GENVL	See Pegler Valve Price List
28mm	1	0	5A2063	GENVL	See Pegler Valve Price List
35mm	1	0	5A2064	GENVL	See Pegler Valve Price List
42mm	1	0	5A2065	GENVL	See Pegler Valve Price List
54mm	1	0	5A2066	GENVL	See Pegler Valve Price List

**PSUF4PRV** pressure reducing valve. VSH XPress union x female parallel thread. Adjustable 0.5 - 6.0 bar. Nickel plated



dimension	pack 1 qty	pack 2 qty	code	price cat	£ each
15mm x 1/2"	1	0	5A2067	GENVL	See Pegler Valve Price List
22mm x 3/4"	1	0	5A2068	GENVL	See Pegler Valve Price List

**Ballofix** isolating ball valve - straight pattern. Screwdriver slot



dimension	pack 1 qty	pack 2 qty	code	price cat	£ each
15mm	1	5	13060	BALLO	See Pegler Valve Price List
22mm	5	50	13061	BALLO	See Pegler Valve Price List

**CPT0059** small plastic handle with hexagon spigot



dimension	pack 1 qty	pack 2 qty	code	price cat	£ each
N/A	1	20	13712	BALLO	See Pegler Valve Price List

**CPT0073** large plastic handle with hexagon spigot



dimension	pack 1 qty	pack 2 qty	code	price cat	£ each
N/A	1	0	13721	BALLO	See Pegler Valve Price List

**valves**

**small plastic handle ERG with screw**



dimension	pack 1 qty	pack 2 qty	code	price cat	£ each
N/A	20	0	13724	BALLO	See Pegler Valve Price List
N/A	1	20	13728	BALLO	See Pegler Valve Price List
N/A	1	20	13729	BALLO	See Pegler Valve Price List
N/A	1	20	13732	BALLO	See Pegler Valve Price List

**large plastic handle ERG with screw**



dimension	pack 1 qty	pack 2 qty	code	price cat	£ each
N/A	1	20	13725	BALLO	See Pegler Valve Price List

**valves - Fullflow carbon**

**XPR10100 carbon Fullflow ball valve (press)**



dimension	pack 1 qty	pack 2 qty	code	price cat	£ each
15 (DN10) - Silver	1	25	1010000100	GENVL	See Pegler Valve Price List
18 (DN15) - Silver	1	25	1015000100	GENVL	See Pegler Valve Price List
22 (DN20) - Silver	1	13	1020000100	GENVL	See Pegler Valve Price List
28 (DN25) - Silver	1	10	1025000100	GENVL	See Pegler Valve Price List
35 (DN32) - Silver	1	10	1032000100	GENVL	See Pegler Valve Price List
42 (DN40) - Silver	1	7	1040000100	GENVL	See Pegler Valve Price List
54 (DN50) - Silver	1	5	1050000100	GENVL	See Pegler Valve Price List

**XPR11000 carbon Fullflow ball valve (press x thread)**



dimension	pack 1 qty	pack 2 qty	code	price cat	£ each
15xG1/2 (DN10) - Silver	1	25	1010001010	GENVL	See Pegler Valve Price List
18xG3/4 (DN15) - Silver	1	25	1015001010	GENVL	See Pegler Valve Price List
22xG3/4 (DN20) - Silver	1	15	1020001000	GENVL	See Pegler Valve Price List
28xG1 (DN25) - Silver	1	10	1025001000	GENVL	See Pegler Valve Price List
35xG1 1/4 (DN32) - Silver	1	10	1032001000	GENVL	See Pegler Valve Price List
42xG1 1/2 (DN40) - Silver	1	7	1040001000	GENVL	See Pegler Valve Price List
54xG2 (DN50) - Silver	1	5	1050001000	GENVL	See Pegler Valve Price List

**XPR10101 carbon Fullflow ball valve high (press)**



dimension	pack 1 qty	pack 2 qty	code	price cat	£ each
15 (DN10) - Silver	1	20	1010000101	GENVL	See Pegler Valve Price List
18 (DN15) - Silver	1	20	1015000101	GENVL	See Pegler Valve Price List
22 (DN20) - Silver	1	10	1020000101	GENVL	See Pegler Valve Price List
28 (DN25) - Silver	1	8	1025000101	GENVL	See Pegler Valve Price List
35 (DN32) - Silver	1	10	1032000101	GENVL	See Pegler Valve Price List
42 (DN40) - Silver	1	5	1040000101	GENVL	See Pegler Valve Price List
54 (DN50) - Silver	1	5	1050000101	GENVL	See Pegler Valve Price List

**valves - Fullflow carbon**

**XPR11001 carbon Fullflow ball valve high (press x thread)**



**XPR11400 carbon Fullflow ball valve (press x nut)**



dimension	pack 1 qty	pack 2 qty	code	price cat	£ each
15xG1/2 (DN10) - Silver	1	20	1010001011	GENVL	See Pegler Valve Price List
18xG3/4 (DN15) - Silver	1	15	1015001011	GENVL	See Pegler Valve Price List
22xG3/4 (DN20) - Silver	1	10	1020001001	GENVL	See Pegler Valve Price List
28xG1 (DN25) - Silver	1	8	1025001001	GENVL	See Pegler Valve Price List
35xG1 1/4 (DN32) - Silver	1	10	1032001001	GENVL	See Pegler Valve Price List
42xG1 1/2 (DN40) - Silver	1	5	1040001001	GENVL	See Pegler Valve Price List
54xG2 (DN50) - Silver	1	5	1050001001	GENVL	See Pegler Valve Price List

dimension	pack 1 qty	pack 2 qty	code	price cat	£ each
15xG3/4 (DN10) - Silver	1	25	1010001410	GENVL	See Pegler Valve Price List
18xG3/4 (DN15) - Silver	1	25	1015001400	GENVL	See Pegler Valve Price List
22xG3/4 (DN20) - Silver	1	15	1020001410	GENVL	See Pegler Valve Price List
28xG1 1/4 (DN25) - Silver	1	10	1025001400	GENVL	See Pegler Valve Price List
35xG1 1/2 (DN32) - Silver	1	10	1032001400	GENVL	See Pegler Valve Price List
42xG1 3/4 (DN40) - Silver	1	7	1040001400	GENVL	See Pegler Valve Price List
54xG2 1/4 (DN50) - Silver	1	5	1050001400	GENVL	See Pegler Valve Price List

**valves - Fullflow carbon**

**XPR11401 carbon Fullflow ball valve high  
(press x nut)**



dimension	pack 1 qty	pack 2 qty	code	price cat	£ each
15xG3/4 (DN10) - Silver	1	20	1010001411	GENVL	See Pegler Valve Price List
18xG3/4 (DN15) - Silver	1	15	1015001401	GENVL	See Pegler Valve Price List
22xG3/4 (DN20) - Silver	1	10	1020001411	GENVL	See Pegler Valve Price List
28xG1 1/4 (DN25) - Silver	1	8	1025001401	GENVL	See Pegler Valve Price List
35xG1 1/2 (DN32) - Silver	1	10	1032001401	GENVL	See Pegler Valve Price List
42xG1 3/4 (DN40) - Silver	1	5	1040001401	GENVL	See Pegler Valve Price List
54xG2 1/4 (DN50) - Silver	1	5	1050001401	GENVL	See Pegler Valve Price List

**valves - Fullflow stainless**

**XPR21000 stainless ball valve  
(press x thread)**



dimension	pack 1 qty	pack 2 qty	code	price cat	£ each
15xG1/2 (DN10) - Silver	1	25	2010001010	GENVL	See Pegler Valve Price List
18xG3/4 (DN15) - Silver	1	25	2015001010	GENVL	See Pegler Valve Price List
22xG3/4 (DN20) - Silver	1	15	2020001000	GENVL	See Pegler Valve Price List
28xG1 (DN25) - Silver	1	10	2025001000	GENVL	See Pegler Valve Price List
35xG1 1/4 (DN32) - Silver	1	10	2032001000	GENVL	See Pegler Valve Price List
42xG1 1/2 (DN40) - Silver	1	7	2040001000	GENVL	See Pegler Valve Price List
54xG2 (DN50) - Silver	1	5	2050001000	GENVL	See Pegler Valve Price List

**XPR21401 stainless ball valve high  
(press x nut)**



dimension	pack 1 qty	pack 2 qty	code	price cat	£ each
15xG3/4 (DN10) - Silver	1	20	2010001411	GENVL	See Pegler Valve Price List
18xG3/4 (DN15) - Silver	1	15	2015001401	GENVL	See Pegler Valve Price List
22xG3/4 (DN20) - Silver	1	10	2020001411	GENVL	See Pegler Valve Price List
28xG1 1/4 (DN25) - Silver	1	8	2025001401	GENVL	See Pegler Valve Price List
35xG1 1/2 (DN32) - Silver	1	10	2032001401	GENVL	See Pegler Valve Price List
42xG1 3/4 (DN40) - Silver	1	5	2040001401	GENVL	See Pegler Valve Price List
54xG2 1/4 (DN50) - Silver	1	5	2050001401	GENVL	See Pegler Valve Price List

**XPR20101 stainless ball valve high (press)**



dimension	pack 1 qty	pack 2 qty	code	price cat	£ each
15 (DN10) - Silver	1	20	2010000101	GENVL	See Pegler Valve Price List
18 (DN15) - Silver	1	15	2015000101	GENVL	See Pegler Valve Price List
22 (DN20) - Silver	1	10	2020000101	GENVL	See Pegler Valve Price List
28 (DN25) - Silver	1	8	2025000101	GENVL	See Pegler Valve Price List
35 (DN32) - Silver	1	10	2032000101	GENVL	See Pegler Valve Price List
42 (DN40) - Silver	1	5	2040000101	GENVL	See Pegler Valve Price List
54 (DN50) - Silver	1	5	2050000101	GENVL	See Pegler Valve Price List

**valves - Fullflow stainless**

**XPR21400 stainless ball valve (press x nut)**



dimension	pack 1 qty	pack 2 qty	code	price cat	£ each
15xG3/4 (DN10) - Silver	1	25	2010001410	GENVL	See Pegler Valve Price List
18xG3/4 (DN15) - Silver	1	25	2015001400	GENVL	See Pegler Valve Price List
22xG3/4 (DN20) - Silver	1	15	2020001410	GENVL	See Pegler Valve Price List
28xG1 1/4 (DN25) - Silver	1	10	2025001400	GENVL	See Pegler Valve Price List
35xG1 1/2 (DN32) - Silver	1	10	2032001400	GENVL	See Pegler Valve Price List
42xG1 3/4 (DN40) - Silver	1	7	2040001400	GENVL	See Pegler Valve Price List
54xG2 1/4 (DN50) - Silver	1	5	2050001400	GENVL	See Pegler Valve Price List

**XPR21001 stainless ball valve high (press x thread)**



dimension	pack 1 qty	pack 2 qty	code	price cat	£ each
15xG1/2 (DN10) - Silver	1	20	2010001011	GENVL	See Pegler Valve Price List
18xG3/4 (DN15) - Silver	1	15	2015001011	GENVL	See Pegler Valve Price List
22xG3/4 (DN20) - Silver	1	10	2020001001	GENVL	See Pegler Valve Price List
28xG1 (DN25) - Silver	1	8	2025001001	GENVL	See Pegler Valve Price List
35xG1 1/4 (DN32) - Silver	1	10	2032001001	GENVL	See Pegler Valve Price List
42xG1 1/2 (DN40) - Silver	1	5	2040001001	GENVL	See Pegler Valve Price List
54xG2 (DN50) - Silver	1	5	2050001001	GENVL	See Pegler Valve Price List

**XPR20100 stainless ball valve (press)**



dimension	pack 1 qty	pack 2 qty	code	price cat	£ each
15 (DN10) - Silver	1	25	2010000100	GENVL	See Pegler Valve Price List
18 (DN15) - Silver	1	25	2015000100	GENVL	See Pegler Valve Price List
22 (DN20) - Silver	1	15	2020000100	GENVL	See Pegler Valve Price List
28 (DN25) - Silver	1	10	2025000100	GENVL	See Pegler Valve Price List
35 (DN32) - Silver	1	10	2032000100	GENVL	See Pegler Valve Price List
42 (DN40) - Silver	1	7	2040000100	GENVL	See Pegler Valve Price List
54 (DN50) - Silver	1	5	2050000100	GENVL	See Pegler Valve Price List

# TERMS AND CONDITIONS

## GENERAL CONDITIONS OF SALE

### 1. Definitions

- 1.1 **"Supplier"**: Pegler Yorkshire Group Limited (registered in England and Wales with company number 00401507) with its registered office at St. Catherine's Avenue, Doncaster, South Yorkshire, DN4 8DF United Kingdom.
- 1.2 **"Customer"**: the Party that concludes or wishes to conclude an Agreement with Supplier.
- 1.3 **"Agreement"**: an agreement or acknowledged purchase order for the delivery of movable items (products) and/or the performance of services by Supplier to the Customer.
- 1.4 **"VAT"**: value added tax or any equivalent tax chargeable in the UK.

### 2. Applicability of the General Conditions of Sale

- 2.1 These General Conditions of Sale shall apply to all Agreements and to all legal acts relating to the formation thereof.
- 2.2 These General Conditions of Sale shall also, after they have become part of any Agreement between Supplier and a Customer, form part of Agreements concluded later between Supplier and the Customer, even if at the formation of the agreements concluded later there has been no reference to the applicability of these General Conditions of Sale or if these General Conditions of Sale have not been submitted, such unless the Parties have expressly agreed otherwise in writing.
- 2.3 The applicability of the general terms and conditions of the Customer is explicitly rejected.
- 2.4 Supplier may amend these General Conditions of Sale. The amendments will take effect 30 calendar days after the date on which the amended conditions were sent to the Customer by Supplier.
- 2.5 In the event that one or more provisions of these General Conditions of Sale are void or may be declared void, the other provisions shall still remain in full force and effect. Supplier and the Customer then will consult to replace the provisions that are void and/or have been declared void, with new provisions, taking into consideration, to the extent possible, the purpose and intent of the original provision.

### 3. Offers and formation of Agreements

- 3.1 Agreements between the Parties will only be concluded after an order from the Customer has been confirmed in writing by Supplier, by a representative of Supplier duly authorized for this purpose, or because Supplier without reservation has performed the Agreement in a manner which is clear to the Customer. Verbal promises or agreements by or with its personnel shall only bind Supplier after and to the extent that Supplier has confirmed this in writing.
- 3.2 Confirmations sent by Supplier are considered to reflect the Agreement correctly and completely, barring evidence to the contrary.
- 3.3 Information provided by Supplier in the form of catalogues, pictures, drawings, weights, tests (samples), dimensions, technical specifications or shipping documents are for information purposes only and do not form part of the Agreement, unless expressly agreed in writing.
- 3.4 The Customer shall be responsible for ensuring the accuracy of the terms of its order.

- 3.5 Any additional agreements or amendments to the Agreement and/or commitments relating to the Agreement, made after formation of the Agreement, shall only bind Supplier when confirmed in writing by a representative of Supplier duly authorized for this purpose.
- 3.6 The Customer shall ensure that Supplier in time is provided with any information of which Supplier indicates that it is required, or of which the Customer in fairness should understand that it is required, for the provision of the products and/or the services. If the information necessary for the performance of the Agreement is not provided to Supplier in time, Supplier has the right to suspend performance of the Agreement and/or to charge the Customer the extra costs arising as a result of the delay, in accordance with the current rates.
- 3.7 If during performance of the Agreement it becomes evident that for a proper performance it will be necessary to amend or add to the Agreement, in whole or in part, the Parties will agree in a timely manner to try and amend the Agreement accordingly. Any amendments will be made in writing and signed by the Parties.

### 4. Subcontracting and transfer to third parties

Supplier has the right to subcontract its obligations vis-a-vis the Customer, in whole or in part. Supplier has the right to transfer the rights and obligations arising from the Agreement with the Customer to a third party/third parties.

### 5. Prices

- 5.1 The prices stated by Supplier are exclusive of VAT and exclusive of all other costs related to delivery, including, but not limited to insurance, overhead, packaging, transport and forwarding costs and delivery, administration, call-out and connection charges, unless the Parties have expressly agreed otherwise in writing.
- 5.2 Supplier has the right to adjust the prices when needed.
- 5.3 The Supplier may in its absolute discretion implement (and adjust) minimum order requirements by quantity and/or value.

### 6. Payment and Security

- 6.1 The Supplier has the right to invoice from the moment of formation of an Agreement. Unless expressly agreed otherwise in writing, payment shall be made within 30 calendar days of the invoice date. Payment must be made in GBP and without any set-off, discount and/or suspension.
- 6.2 In the event of late payment of an invoice, the Customer, without any notice of default, will be in default and all payment obligations of the Customer will immediately become due and payable, without prejudice to the other rights accruing to Supplier. This is also the case if the Customer files a petition for its own liquidation, if a petition for its liquidation is filed or if the Customer is declared to be in a state of liquidation or if the Customer applies for a moratorium, if a moratorium for the Customer is applied for or if a moratorium is granted to the Customer.
- 6.3 In the event of late payment of an invoice, the Supplier may, without limiting its other rights:
- charge interest on such sums at 5% a year above the base rate of Lloyds Bank from time to time in force. Interest shall accrue on a daily basis and apply from the due date for payment until actual payment in full, whether before or after judgment;
  - suspend any deliveries to the Customer in whole or in part; and/or
  - cancel the Agreement.
- 6.4 Payments made by the Customer shall first of all serve to settle any payable interest and costs and subsequently the longest outstanding payable invoices, even if the Customer should state that the payment is related to a subsequently sent invoice.
- 6.5 At the time of conclusion of the Agreement or after conclusion of the Agreement, Supplier has the right to require advance payment from the Customer or proper security, in whole or in part, for the fulfilment of the obligations of the Customer under the Agreement, in the form of a bank guarantee or a reasonably equivalent security and Supplier has the right, until this security has been provided, to suspend its obligations towards the Customer.

### 7. Delivery and risk transfer

- 7.1 In the event that Supplier shows or provides a drawing, picture, model, design or other information, this shall only serve as an indication. The delivered products may vary from the displayed products.
- 7.2 Delivery will take place in accordance with the manner set out in the Agreement or, if not set out in the Agreement, FCA Incoterm® 2010.
- 7.3 The Customer may request a next working day delivery (Overnight Delivery) provided the request is made before 4.00pm Monday – Thursday and before 3.30pm on Fridays. The Supplier may (but is under no obligation to) agree to an Overnight Delivery request and shall charge the Customer for any increased costs incurred as a result of the Overnight Delivery.
- 7.4 The Customer shall check the delivered products within 5 working days of delivery, for any shortages or damage, or shall perform this check or have this check performed after notification by Supplier that the goods are at the disposal of the Customer. In the event that the goods are damaged the Customer must notify the Supplier immediately.
- 7.5 In the event that up to and including 2% more or less than the quantity of products ordered are delivered, the Customer shall not be entitled to reject the Order nor withhold or set off any payment to the Supplier as a result.
- 7.6 In the event that over 2% more or less than the quantity of products ordered are delivered, the Customer must notify the Supplier of this in writing within 5 working days of delivery and the Supplier may, at its absolute discretion,

credit the Customer for the shortage or invoice the Customer for the excess. The Customer shall not be entitled to reject the Order nor withhold or set off any payment to the Supplier as a result.

7.7 All costs related to inspections and re-inspections shall be borne by the Customer.

7.8 Subject to article 12, the Customer shall not return any goods to the Supplier without the Supplier's prior written consent or other agreement in writing.

### 8. Partial delivery

Supplier reserves the right to deliver in parts (partial deliveries) which may be invoiced separately. In case of a partial delivery, the Customer shall also pay in accordance with the provision of article 6 of these General Conditions of Sale.

### 9. Delivery date

- 9.1 Indication of the delivery date by Supplier is an approximate estimate only and is not considered a final deadline unless expressly agreed otherwise.
- 9.2 Supplier is in no way liable for exceeding the delivery date, by any cause whatsoever. Exceeding the delivery date does not make Supplier liable to pay any compensation and does not give the Customer the right to terminate the Agreement and/or to refuse to take delivery and/or to invoke suspension.

### 10. Force majeure

- 10.1 Force majeure shall be taken to mean any event or sequence of events beyond the Supplier's reasonable control preventing or delaying it from performing its obligations under the Agreement including an act of God, fire, flood, lightning, earthquake or other natural disaster; war, riot or civil unrest; interruption or failure of supplies of power, fuel, water, transport, equipment or telecommunications service; damage to or destruction of premises or material required for performance of the Agreement; strike, lockout or boycott or other industrial action including strikes or other industrial disputes involving the Supplier's or its suppliers workforce.
- 10.2 During a period of force majeure, the obligations to deliver and other obligations of Supplier will be suspended. If the period, in which performance of Supplier's obligations is no longer possible due to force majeure, should last longer than six calendar months, both Parties shall have the right to terminate the Agreement, in whole or in part, without any obligation to pay damages or to cancel the agreement.
- 10.3 Supplier has the right to claim payment for the work already carried out in the performance of the relevant Agreement, before the events causing the force majeure became evident.
- 10.4 Supplier also has the right to invoke force majeure if the event causing the force majeure occurs after Supplier should already have delivered the performance.

### 11. Retention of Title

- 11.1 Supplier remains the owner of all goods delivered to the Customer until all claims Supplier has against the Customer, for whatever reason, shall be paid, including interest and costs.
- 11.2 As long as the ownership has not been transferred to the Customer, the Customer may not pledge the goods or grant any rights to the goods to any third party, subject to the other provisions of this article.
- 11.3 The Customer shall store the goods delivered under retention of title separately with the required care and identifiable as the property of Supplier and the Customer shall insure the goods against the usual risks.
- 11.4 The Customer is authorized to sell and transfer the goods delivered under retention of title to third parties, acting in the ordinary course of the firm's business. When selling on credit the Customer shall require from its customers that the goods shall remain subject to retention of title in accordance with the provisions of this article.
- 11.5 Where applicable, Supplier shall have the right to unlimited access to the goods under retention of title. The Customer shall provide Supplier with all the assistance needed to exercise the retention of title included in this article by taking back these goods, including carrying out any dismantling required, and (unless otherwise agreed in writing) the Supplier shall be entitled to charge the Customer a reasonable restocking fee.

### 12. Warranty

- 12.1 With due observance of the following restrictions and the other provisions of these General Conditions of Sale, Supplier warrants that the goods delivered shall:
- conform in all material respects to their

- specifications; and
  - be free from material defects in design, material and workmanship, during the period as described in the product literature (unless otherwise agreed by the Supplier in writing), commencing at the time of delivery of the goods to the Customer. When providing the services, Supplier warrants that when performing these services due care will be taken.
- 12.2 If the Customer alleges that some or all of the goods delivered do not conform with the warranty in article 12.1, the Customer must give the Supplier a reasonable opportunity to examine the allegedly defective goods and deliver them to the Supplier.
- 12.3 If the Customer invokes any warranty provision of the Agreement on valid grounds, Supplier, at its option and without prejudice to the other provisions of these conditions, shall either proceed to replace the delivered goods, or to terminate (in whole or in part) the Agreement in combination with a pro-rata refund of the payment already made by the Customer, without any obligation to pay damages. Costs of materials, call-out charges, installation costs and such like are explicitly excluded from the warranty.

12.4 Without prejudice to the provisions of this article 12, the agreed upon warranty obligations will lapse if:

- the delivered goods have not been put into operation by Supplier or a qualified firm of installers in accordance with the accompanying installation conditions and/or instructions;
- the installer engaged has not complied with the applicable legislation and regulations;
- the Customer has used the delivered goods for a purpose other than the designated use;
- the Customer (in Supplier's reasonable opinion) has handled, used or maintained the delivered goods in an improper manner and/or has failed to comply with the Supplier's instructions in relation to the goods;
- there is normal wear and tear, wilful damage or negligence;
- defects in the delivered goods are the result of any government regulations relating to the nature or the quality of the materials used;
- the Customer fails to fulfil its obligations towards Supplier;
- the Customer makes a change or changes to, or repairs, the delivered goods or has changes or repairs made by third parties, without prior written permission from Supplier;
- to the extent caused by the Supplier following any specification or requirement of the Customer in relation to the goods;
- the defects in the delivered goods are otherwise, in whole or in part, attributable to the Customer.

12.4 Any labour costs, costs of disassembly, shipment and transport will be for the account and risk of the Customer. Products or parts of products, to be repaired or replaced by Supplier, shall be sent postage paid to Supplier by the Customer, after obtaining Supplier's written permission. Products that have been returned and are found not to be defective, will be returned to the Customer for the account of the Customer and Supplier's costs for investigating the complaint shall also be charged to the Customer.

12.5 In case of replacement or repair of the goods delivered the original warranty period will not be extended and there will not be a new warranty period.

12.6 A warranty claim does not give the Customer any right to suspend any obligation towards Supplier, including the obligation to pay any invoice from the Supplier.

12.7 In the event of sale of finished goods – goods purchased by Supplier and delivered unprocessed – the goods will be sold in the condition they are in. In respect thereof, Supplier does not provide any guarantee and does not accept any liability, unless expressly agreed otherwise in writing and then only if, and to the extent that, the relevant manufacturer/supplier provides guarantee and only to the extent the manufacturer/supplier provides guarantee.

12.8 If in the context of the performance of the Agreement by Supplier parts are outsourced to third parties under stricter conditions than these General Conditions of Sale, Supplier may enforce, for the outsourced part of the Agreement, the same stricter conditions against the Customer.

12.9 Except as set out in this article 12, the Supplier shall have no liability to the Customer in respect of the goods' failure to comply with

the warranty set out in article 12.1.

12.10 All warranties and conditions (including the conditions implied by ss 13-15 of the Sale of Goods Act 1979), whether express or implied by statute, common law or otherwise are excluded to the extent permitted by law.

### 13. Complaints

13.1 Complaints shall be submitted in writing and as soon as possible, but no later than, and with due regard to, the period referred to in article 7.4, within 5 working days of delivery of the products (or in the case of latent defects within a reasonable time of discovery of the defects or when the defects reasonably should have been discovered) specifying the nature and the basis of the complaint/complaints.

13.2 Complaints about the services provided shall be reported in writing to Supplier by the Customer, within 5 working days of discovery, but no later than 10 working days after completion of the relevant services.

13.3 When the abovementioned period has expired, the Customer is deemed to have approved the delivery. In that case, complaints will no longer be handled by Supplier.

### 14. Liability

14.1 Nothing in this Agreement shall limit or exclude the Supplier's liability for:

(a) death or personal injury caused by its negligence, or the negligence of its employees, agents or subcontractors (if applicable);

(b) fraud or fraudulent misrepresentation; and (c) breach of the terms implied by section 12 of the Sale of Goods Act 1979.

14.2 The Supplier shall not be liable for indirect loss and consequential damage incurred by the Customer as a result of an attributable failure by Supplier to fulfil the obligations arising from any Agreement, including, but expressly not limited to: business interruption, loss of profits, lost sales, immaterial damage, lost opportunities and defamation.

14.3 Supplier's liability for direct damage incurred by the Customer which is proven to be the result or is related to an attributable failure on the part of Supplier to fulfil its obligations towards the Customer under an Agreement concluded with the Customer, is limited per event or series of related events with a common cause, to the price of the products.

14.4 No failure or delay by a party to exercise any right or remedy provided under this agreement or by law shall constitute a waiver of that or any other right or remedy, nor shall it prevent or restrict the further exercise of that or any other right or remedy. No single or partial exercise of such right or remedy shall prevent or restrict the further exercise of that or any other right or remedy.

### 15. "Product recall"

15.1 The Customer shall act in respect of the products delivered (or resold) by Supplier, in accordance with the applicable requirements of product safety.

15.2 The Customer shall cooperate as requested by Supplier if Supplier, whether or not on the basis of European or English laws or regulations, wishes to proceed with a measure in the field of product safety, for instance a public warning or a product recall.

15.3 The Customer shall not proceed to take a measure in the field of product safety, for instance a public warning, a product recall or informing a competent authority, without the prior written consent of Supplier.

15.4 In order to enable any public warning or product recall, the Customer shall always keep records of the amounts of products delivered and also to whom and when these deliveries of the products delivered by Supplier were made.

### 16. Intellectual property rights

16.1 All intellectual property rights (including, inter alia, copyrights and design rights both registered and unregistered) to drawings, photographs, catalogues, models, designs, calculations and the like made available to the Customer by Supplier (hereinafter referred to as: "the Materials") will always be vested in Supplier and will never be transferred to the Customer. Where these General Conditions of Sale refer to "deliver" or conjugations of this word this cannot be taken to mean that transfer of intellectual property rights is intended. The Customer is only granted a non-exclusive, non-transferable and revocable right to use the Materials in an unaltered form and for its own use, which right furthermore does not exceed the specifically agreed use and/or the use that is reasonably required within the context of the performance of the Agreement.

16.2 If by the performance of any Agreement intellectual property rights (including copyrights and design rights, whether or not registered) are nevertheless transferred to the Customer, the Customer shall at the first

request to this effect from the Supplier undertake everything necessary to transfer these rights back to the Supplier and to secure these rights.

16.3 Without prejudice to the generality of this article, it is in particular expressly not allowed for the Customer to copy and/or edit the content (including photographs) of catalogues made available by Supplier. If and insofar as Supplier put digital photographs at the disposal of the Customer, the use of these photographs is only allowed for the purposes specifically specified by Supplier and the use hereof on any website is prohibited unless Supplier has explicitly granted its prior written consent. Supplier has the right to withdraw its permission to use the Materials at any time, with immediate effect, without becoming liable towards the Customer and in this event the Customer shall immediately return the Materials to Supplier.

16.4 The Customer is not allowed to place its own photographs or drawings of products originating from Supplier on the Internet.

16.5 If and insofar as it is ascertained at law that the products delivered to the Customer by Supplier infringe any intellectual property rights of any third parties, Supplier will take back the products against reimbursement of the purchase price paid by the Customer. Said reimbursement of the purchase price is the sole remedy of the Customer in this respect.

16.6 To the extent that the goods are to be manufactured in accordance with a specification supplied by the Customer, the Customer shall indemnify the Supplier against all liabilities, costs, expenses, damages and losses (including any direct, indirect or consequential losses, loss of profit, loss of reputation and all interest, penalties and legal and other reasonable professional costs and expenses) suffered or incurred by the Supplier in connection with any claim made against the Supplier for actual or alleged infringement of a third party's intellectual property rights arising out of or in connection with the Supplier's use of the Customer's specification.

### 17. Termination and cancellation

17.1 Without affecting any other right or remedy available to it, Supplier has the right to terminate or cancel the Agreement concluded with the Customer, without any obligation to pay damages, if:

a. the Customer suspends, or threatens to suspend, payment of its debts or is unable to pay its debts as they fall due or admits inability to pay its debts or is deemed unable to pay its debts within the meaning of section 123 of the Insolvency Act 1986 as if the words "it is proved to the satisfaction of the court" did not appear in sections 123(1)(e) or 123(2);

b. the Customer is declared to be in liquidation, files for a winding-up petition or if a winding-up petition is filed for, a notice is given, a resolution is passed, or an order is made, for or in connection with the winding up of the Customer;

c. the Customer begins negotiations with all or any class of its creditors with a view to rescheduling any of its debts, or makes a proposal for or enters into any compromise or arrangement with any of its creditors other than for the sole purpose of a scheme for a solvent amalgamation or solvent reconstruction;

d. an application is made to court, or an order is made, for the appointment of an administrator or if a notice of intention to appoint an administrator is given or if an administrator is appointed over the Customer;

e. the holder of a qualifying floating charge over the assets of the Customer has become entitled to appoint or has appointed an administrative receiver;

f. a person becomes entitled to appoint a receiver over all or any of the assets of the Customer or a receiver is appointed over all or any of the assets of the Customer;

g. a creditor or encumbrancer of the other party attaches or takes possession of, or a distress, execution, sequestration or other such process is levied or enforced on or sued against, the whole or any part of the Customer's assets and such attachment or process is not discharged within 14 days;

h. any event occurs, or proceeding is taken, with respect to the Customer in any jurisdiction to which it is subject that has an effect equivalent or similar to any of the events mentioned in article 18.1(a) to (g) inclusive;

i. a party obtains control of the Customer other than the party at the time of conclusion of the Agreement;

j. the Customer due to force majeure is unable to fulfil its obligations towards Supplier and the situation of force majeure lasts for at least 20 calendar days;

k. The Customer culpably fails to fulfil its obligations arising from the Agreement without Supplier being obliged to send any notice of default.

17.2 The Customer shall fulfil all (financial) obligations to the Supplier notwithstanding termination.

### 18. No assignment clause and prohibition on pledging

18.1 The Customer does not have the right to encumber or transfer any rights or obligations under the Agreement without the prior written consent of Supplier.

18.2 Third party rights. No one other than a party to this Contract and their permitted assignees shall have any right to enforce any of its terms.

### 19. Confidentiality

19.1 The Customer guarantees that it will take measures to ensure confidentiality towards third parties regarding all data and information about Suppliers organisation/organisations, customers, procedures, files and products, etc (Confidential Information), of which the Customer becomes aware, relating to all data and information in any connection to Supplier, except when the data or information is clearly not of a secret or confidential nature, or through no action of the Customer have already become common knowledge or in case a legal provision, a judicial authority or a competent government agency prescribes it. In any case, the content of the Agreement and everything Supplier indicates or has indicated as being secret or confidential will be considered Confidential Information. The Customer guarantees that the employees involved in the performance of the work will maintain confidentiality.

19.2 With respect to any Confidential Information originating from Supplier held by the Customer in any form whatsoever or on any information carrier or to any Confidential Information provided to the Customer, the Customer undertakes to:

a. keep the Confidential Information no longer than reasonably required for the fulfilment of the agreed obligations and to make this Confidential Information (including any copies made) again available to Supplier, immediately after those obligations have been fully fulfilled or to destroy the Confidential Information after obtaining permission from Supplier that provided this information;

b. to make the Confidential Information available only to personnel and/or third parties working for them for which it is required that they are aware of this Confidential Information. The Confidential Information is only provided to third parties if they have signed a nondisclosure agreement. The personnel and/or third parties with access to the Confidential Information will be informed of this obligation of confidentiality imposed on this Information. The necessary steps are taken to ensure further confidentiality.

19.3. Confidentiality will remain in force even after termination of the Agreement.

19.4. The Customer will not go public with substantive information on the Agreement without the prior written consent of Supplier. The Customer will obtain the Supplier's written consent in the event that it wants to use the Supplier's name for publicity purposes.

19.5. Within 10 (in words: ten) working days of the request for the return or destruction of Confidential information, the Party providing the information will return any (copies of the) Confidential Information to the Party receiving the information or the Party receiving this information will destroy this information. If so requested, the Party receiving the information will declare in writing that all the acts mentioned above have been performed. For clarification of this article, "documents" will be taken to mean all carriers, including paper, diskettes, tapes, CD-ROMs, DVD-ROMs and any other options to store information.

### 20. Governance and integrity

20.1 The Customer shall comply with all laws, enactments, regulations, regulatory policies, guidelines and industry codes applicable to it and shall maintain such authorisations and all other approvals, permits and authorities as are required from time to time to perform its obligations under or in connection with the Agreement.

20.2 Without prejudice to the generality of article 20.1, each party shall comply with the Bribery Act 2010 or any similar or equivalent legislation in any other relevant jurisdiction, including ensuring that it has in place adequate procedures to prevent bribery and use all reasonable endeavours to ensure that:

a. all of that party's personnel; b. all others associated with that party; and c. all of that party's subcontractors, involved in performing the Agreement so comply.

20.3 Neither party shall make or receive any bribe (as defined in the Bribery Act 2010) or other improper payment or allow any such to be made or received on its behalf, either in the United Kingdom or elsewhere and shall implement and maintain adequate procedures to ensure that such bribes or payments are not made or received directly or indirectly on its behalf.

20.4 The Customer undertakes, warrants and represents that:

a. neither the Customer nor any of its officers, employees, agents or subcontractors has: (1) committed an offence under the Modern Slavery Act 2015 (an "MSA Offence"); (2) been notified that it is subject to an investigation relating to an alleged MSA Offence or prosecution under the Modern Slavery Act 2015; or (3) is aware if any circumstances within its supply chain that could give rise to an investigation relating to an alleged MSA Offence or prosecution under the Modern Slavery Act 2015; and b. it shall comply with the Modern Slavery Act 2015.

### 21. Entire agreement

The parties agree that the Agreement constitutes the entire agreement between them and supersedes all previous agreements, understandings and arrangements between them, whether in writing or oral in respect of its subject matter. Each party acknowledges that it has not entered into the Contract in reliance on, and shall have no remedies in respect of, any representation or warranty that is not expressly set out in the Contract. No party shall have any claim for innocent or negligent misrepresentation on the basis of any statement in the Contract. Nothing in these Conditions purports to limit or exclude any liability for fraud.

### 22. Governing law and disputes

22.1 The Agreement and any dispute or claim (including non-contractual disputes or claims) arising out of or in connection with or its subject matter or formation, shall be governed by and construed in accordance with the law of England and Wales.

22.2 Each party irrevocably agrees that the courts of England and Wales shall have exclusive jurisdiction to settle any dispute or claim (including non-contractual disputes or claims) arising out of or in connection with this Agreement or its subject matter or formation. 22.3 Notwithstanding article 22.2, the Supplier shall have the right to take, and shall not be prevented from taking, proceedings (including seeking interim or injunctive remedies) against the Customer to settle any dispute or claim arising out of, or in connection with, the Agreement, its subject matter or formation (including non-contractual disputes or claims) in any other court of competent jurisdiction and that the Supplier may take such proceedings in any number of jurisdictions, where concurrently or not, to the extent permitted by law.

### 23. Translation

In case of discrepancies between these General Conditions of Sale in the English language and translations thereof, the English version shall be binding.

Our fully integrated piping system incorporates a unique offering bringing together valves, fittings and pipes into one complete pipe-work system.

It combines the best world-class elements of modern connection and valve technology, incorporating press, push, groove, compression, capillary and threaded solutions for copper, steel, multi-layer and plastic pipes, with an emphasis on delivering heat free jointing.

## head office

### **Pegler Yorkshire Group Limited**

St. Catherine's Avenue / Doncaster  
South Yorkshire / DN4 8DF / England

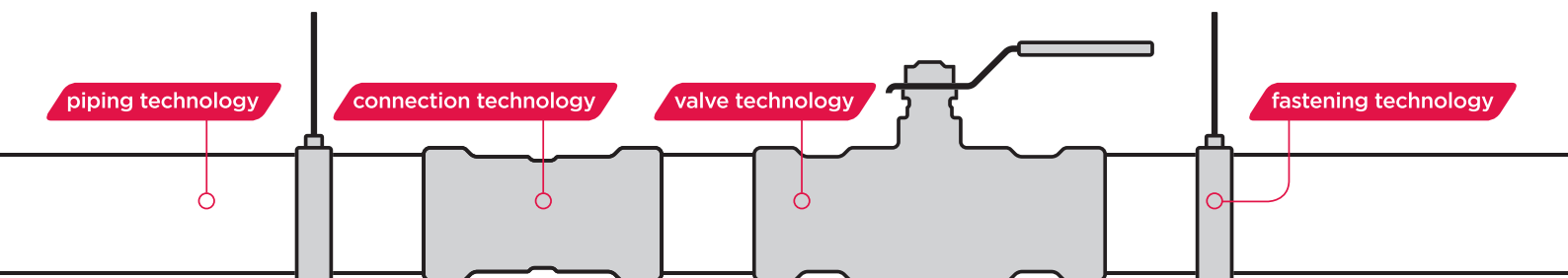
**tel:** +44 (0) 1302 560 560

**fax:** +44 (0) 1302 560 203

**email:** [info@pegler.co.uk](mailto:info@pegler.co.uk)

[www.pegler.co.uk](http://www.pegler.co.uk)

*All brand names and logo styles are registered trademarks. Maintaining a policy of continual product development, we reserve the right to change specifications, design and materials of products listed in this publication without prior notice.*



### **Pegler Yorkshire Group Limited**

St. Catherine's Avenue / Doncaster  
South Yorkshire / DN4 8DF / England  
[www.pegler.co.uk](http://www.pegler.co.uk)